



COLLEGE *of*
marin

Summer Swimming

**Classes at Both Kentfield and
Indian Valley Campuses, page 2**

INSIDE

How to Enroll, page 4

Early Start Classes, page 3

Indian Valley Campus Classes, page 19

**CREDIT/NONCREDIT
CLASSES**

**SUMMER 2012
JUNE 18-JULY 27**

President's Welcome



Dear Students, Prospective Students, and Community Members:

At College of Marin, teaching and learning are at the heart of what we do. Here you can explore a wide range of programs to fit your goals and pursue your dreams. You may choose to complete the first two years of a bachelor's degree, prepare for a career, learn new skills, or pursue your passions.

College of Marin faculty members are recognized for their excellence in the classroom. In addition, the college offers a variety of first-rate support services to help you get started and keep you on track, including academic counseling, career counseling, tutoring, and more. I invite you to become part of our continuing success story and join our diverse community of students who are improving their lives through higher education.

David Wain Coon

Sincerely,
David Wain Coon, Ed.D.
Superintendent/President

Contents

About College of Marin.....	54
Academic Information	34
College Policies	48
Cómo matricularse	6
Counseling Services	42
Course Conflicts	5
Course Listings Key	19
Course Repetitions	5
Directory of Phone and Office Numbers	49
Directory of Student Services	41
Distance Education.....	32
Driving Directions	52
Early Start Classes	3
Equal Opportunity.....	48
Fees, Fee Exemptions, and Waivers	8
Financial Aid	10
Formas de Costear la Educación Universitaria	47
Graduation/Transfer Information	36
How to Enroll	4
Indian Valley Campus Classes.....	19
Indian Valley Campus Map and Directory.....	51
Internet Courses	33
Kentfield Campus Map and Directory ...	50
New Students.....	4
Noncredit Courses.....	31
Open Enrollment Policy.....	48
Oportunidades Educativas	46
Parking Information	53
Student Activities Program.....	40
Student Success Workshop Schedules	7
Summer Classes Deadline Dates.....	16
Tutoring and Learning Center (TLC)	45
Veterans Office	45
Video Course	33
Waitlist Option.	4
Who May Enroll.....	15



Summer Swim Classes

PE 070 Adapted Aquatics at KTD, see p.29
PE 156 Instructional Lap Swimming at IVC,
see p. 30

Kentfield Open Recreational and Lap Swim

Dates and times:

June 18 to August 19 (Closed July 4)
Monday through Sunday from 1 p.m. to
6 p.m.

Location:

College of Marin Diamond PE Complex
700 College Ave.
Kentfield, CA

Fee:

Adults \$5
Students (w/ID) or Children \$3
Seniors (55+) or Disabled \$3
Multiple Purchase Discount
10 Adult Passes for \$40
10 Student/Child/Senior/Disabled Passes
for \$25

Contact:

For group rates and general pool
information call 415-485-9580
Weather permitting the Kentfield pool
will be open weekends from August 25 to
October 28.

Indian Valley Campus Open Recreational and Lap Swim

Dates and times:

June 18 to August 9 (Closed July 4)
Monday through Thursday from 1 p.m. to
6 p.m.

Location:

IVC Pool
1800 Ignacio Blvd.
Novato, CA

Fee:

Adults \$5
Students (w/ID) or Children \$3
Seniors (55+) or Disabled \$3
Multiple Purchase Discount
10 Adult Passes for \$40
10 Student/Child/Senior/Disabled Passes
for \$25

Contact:

For group rates and general pool
information call (415) 883-2211, Ext. 8260

Parking

Parking permits are required at both
campuses. Minors are required to have a
parent or guardian complete a waiver of
liability. No one under 14 is allowed in the
pool without parent supervision. Lifeguards
will be on duty.

ON THE COVER: Student Evelyn Prosser at COM's
Kentfield Campus pool.

COVER PHOTO: Dave Mahoney

COLLEGE OF MARIN
835 COLLEGE AVENUE
KENTFIELD, CA 94904-2590
INDIAN VALLEY CAMPUS
800 IGNACIO BOULEVARD
NOVATO, CA 94949
415.457.8811
WWW.MARIN.EDU

Important Dates

Summer 2012 Credit Program Important Dates

EOPS, DSPS, Athletes, and Veterans Students register, mycom.marin.edu	April 18
Continuing Students begin registering according to priority, mycom.marin.edu.....	Beginning April 19
New and Readmit Students register for classes, mycom.marin.edu.....	Beginning May 7
Concurrently enrolled high school students register, in person only, Kentfield or Indian Valley Campus.....	Beginning June 11
California Residency Determination Date	June 17, 2011

First Day of Instruction Monday, June 18

Last day for dismissed students to file a Petition to Return.....	June 21
File application for summer graduation	June 18 - July 19
Holiday-campuses closed	July 4
Final Grades available: mycom.marin.edu.....	Aug 08

NOTE: Please consult the Summer Classes Deadline Dates on pages 16-17 of this Schedule for Last Day to Add; Last Day to Drop without a "W"; Last Day to Select P/NP or Change Grading Option; and Last Day to Drop with a "W".

Plan Ahead — A Few Important Dates for Fall 2012

Continuing Students begin registering according to priority, mycom.marin.edu.....	Beginning April 19
New and Readmit Students register for classes, mycom.marin.edu.....	Beginning May 7
Concurrently enrolled high school students register, in person only, Kentfield or Indian Valley Campus.....	Beginning Aug 6

First Day of Instruction for Weekday Classes Wednesday, Aug 22

Last day for dismissed students to file a Petition to Return.....	Sep 5
---	-------

Complete Your Transfer Requirements at Night!

COM is offering all of the evening classes that you need to transfer to the University of California and California State University systems. Look inside for evening class sections, which are indicated in bold type and shaded. For information about transferring to a four-year university, talk to a College of Marin counselor and see pages 92 to 95. For a detailed listing of all evening courses refer to the html version of the fall 2011 credit/noncredit class schedule available online at www.marin.edu/schedule.

Early Start Classes

Early start classes may be added online or in-person until the first class meeting without an instructor's approval. Students registering after the first class meeting must obtain an add code from the instructor and add the class online by the Last Day to Add.

Course ID	CRN	Start Date	Last Day to Add	Request Drop w/out W & P/NP	Last Drop w/W
BIOL 110	60424	06/05/12	06/12/12	06/19/12	07/14/12
BIOL 110L	60427	06/07/12	06/14/12	06/21/12	07/14/12
BIOL 247B	60531	05/25/12	05/25/12	05/25/12	05/29/12
CHEM 110	60067	06/13/12	06/19/12	06/25/12	07/19/12
DENT 192	60030	05/29/12	06/01/12	06/04/12	06/14/12
DENT 192A	60031	05/30/12	05/30/12	05/30/12	06/13/12
DENT 192AL	60032	05/30/12	05/30/12	05/30/12	06/13/12
FIRE 215	60515	06/04/12	06/06/12	06/13/12	07/11/12
GEOL 127B	60532	04/27/12	04/27/12	04/27/12	05/04/12
MUS 191	60107	05/13/12	05/20/12	05/27/12	06/14/12
MUS 193	60108	05/13/12	05/20/12	05/27/12	06/14/12
MUS 193	60109	05/13/12	05/20/12	05/27/12	06/14/12
MUS 262	60523	05/10/12	05/16/12	05/22/12	06/15/12

How to Enroll

Continuing Student Priority Registration Begins April 19, 2012

Students may register online at mycom.marin.edu, by fax 415.460.0773, or in person. After the initial registration students may add classes to their program online until the first class meeting.

Note: It is strongly recommended that you register on your priority registration date since you will have a better chance of enrolling in your first choice of classes.

Continuing and Readmitted Student Priority Registration Dates

To determine your continuing or readmitted student priority registration date please log into your MyCOM Portal account and click on the Student Tab, then click on the Registration Status link list under the Registration Tools channel.

New Students

New and Readmitted Students—Enrolling at College of Marin is Easy

If you have never enrolled for credit classes at the College of Marin (Kentfield Campus or Indian Valley Campus), or if you are enrolling after an absence of a year or more, please follow these simple steps to enroll.

STEP 1

Complete an Application for Admission.

- Online at: mycom.marin.edu;
Note: Processing your Application for Admissions online will expedite your registration and greatly increase your chances of enrolling in the classes of your choice. Please allow one business day following submission for processing.
- Or fax your application to 415.460.0773;
- Or mail your application to:
Office of Admissions and Records
College of Marin
835 College Avenue
Kentfield, CA 94904
- Or submit your application in person to the Office of Admissions and Records at either the Kentfield Campus or the Indian Valley Campus. You may download an Application for Admissions at www.marin.edu.

Important: If you submit your Application for Admissions in person, by fax, or by mail; allow five business days following submission for processing.

Student Identification Number:

Students will be assigned a College of Marin Student Identification Number

Note: If you do not disclose your Social Security Number on the Application for Admissions it will not be printed on your 1098T tax credit form or official academic transcripts. Students applying for Financial Aid, Veterans Benefits, and College Student Employment must disclose their Social Security Number on the Application.

STEP 2

Complete Orientation and Placement Test.

For Native English Speakers:

- Obtain a College of Marin Student ID Number.
- Complete the Online Orientation at www.marin.edu/orientation
- Print out the Certificate of Completion.
- Fax certificate to 415.456.7770 or bring it to Counseling Services at KTD, SS 211.
- Call the Testing Office at 415.485.9469 or Counseling Services at 415.485.9436 to schedule your College of Marin Math and English Placement Tests.
- See the pre-test sample questions at www.collegeboard.com/student/testing/accuplacer/index.html.

For Credit ESL Students:

- Obtain a College of Marin Student ID Number.
- Call the Testing Office at 415.485.9469 to make an appointment for one of the ESL Workshops listed on page 7.

STEP 3

Meet with an Academic Counselor.

- Call Counseling Services (415.485.9432) or come to KTD, SS 212, to make a counseling appointment.
- Indicate that you are new and have completed your orientation and placement testing.

Discuss your academic goals, previous educational experience, and develop an educational plan for selecting your courses.

Exemption from Steps 2 and 3: You may be exempted from Steps 2 and 3 if you:

- Have an Associate Degree or higher; or
- Have completed 15 units or more at COM or from another college/university;

- Or are not enrolling in English, ESL, math, or any course that has these subjects as a prerequisite.

STEP 4

Register for classes.

New Student Registration begins May, 7, 2012. Once you have submitted an application for admissions, you will receive a COM Welcome Letter with your username and temporary password for creating a MyCOM portal account. New students can register anytime on or after May 7, 2012. The Welcome Letter will be sent via e-mail from "Portal Activation" or by US mail if no e-mail address is provided.

Please note: You must provide a valid e-mail address to create a student portal account.

Concurrently enrolled high school students may register on or after June 11, 2012.

Prerequisites

College of Marin enforces satisfactory completion of prerequisites the time of registration. For information, visit <http://www.marin.edu/admissions/Prerequisites.htm>.

STEP 5

Waitlist Option.

When a class is full, you may place yourself on a waitlist to register for the class. If a space opens up in the class, you will be notified by e-mail that is sent to your MyCOM.marin.edu email account.

WAITLIST FEATURES:

- You should meet course prerequisites prior to placing yourself on a waitlist.
- You have 72 hours to respond to email with registration opportunity.
- Failure to act by the 72 hour deadline will result in your name being removed from the waitlist.

STEP 6

Pay your fees.

- Online at mycom.marin.edu;
- Or in person with a MC/VISA credit card, MC/VISA debit card, personal check, cash, cashiers check, or money order.

Students Who Must Register In Person

If you are a concurrently enrolled high school student or a dismissed student, you must register in person.

Confirmation of Enrollment

A confirmation of enrollment may be obtained at anytime through the Student Portal at mycom.marin.edu.

Open Enrollment/Add Period

Students who did not enroll in a class before the first class meeting, may attend the first class meeting to see if space is available. Instructors may admit students by issuing an add authorization code, then students must complete enrollment online through the Student Portal at mycom.marin.edu, using the add authorization code by the deadline date. Please refer to Summer Classes Deadline Dates listing on pages 16-17 for Last Day to Add.

Important Notice

Students who owe any outstanding fees will have a HOLD placed on their student records and will be prohibited from enrolling in any classes until all fees are paid in full.

If you attempt to add a class and you receive the following message:

“You may not add or drop classes due to holds on your record”.

You may view the hold(s) by clicking on the [View Holds] link.

Other Admissions Information

First Class Meeting

Failure to attend may result in a “no show drop” by the instructor. If a student cannot attend the first class meeting, the student may request that their place be held in the class by contacting the instructor prior to the first class meeting. See Faculty & Staff Directory page on our website for contact information: <http://www.marin.edu/EmployeeDirectory>

Please note: instructors are generally not on campus between terms.

Instructors take roll for students officially enrolled and on the waiting list at the first class meeting. By attending the first class meeting on time, students may avoid losing their place to another student.

Failure to attend a class does not constitute an automatic drop

Students must drop classes online by the refund deadline or the state requires fees be assessed. See Important Dates on page 2 to avoid fees and a penalty grade.

Dropping Classes

Students may drop a class online at mycom.marin.edu. Note: Students must provide a valid e-mail address to create a student portal account. See Summer classes Deadline Dates for drop deadlines on pages 16-17.

Not attending a class does not constitute an automatic drop. Students are also responsible for any outstanding fees for courses they did not attend, but did not drop by the refund deadline.

Course Repetitions

Generally, students may enroll in a course only one time. Specific activity courses may be taken four times. Check the college catalog for exceptions and the Course Repetition Policy.

Closed Classes

Classes are closed when they reach the enrollment limit. Students may choose to place themselves on a wait-list and attend the first class meeting to see if there's space available.

Prerequisite Enforcement at the Time of Enrollment

As described on page 34 of this schedule, under the Prerequisites, Corequisites & Advisories section, by law the college requires students to satisfactorily complete prerequisite courses prior to registering in courses that have prerequisites.

Enforcement of prerequisites will take place at the time of enrollment, not in the classroom with instructors. Students who have not met a prerequisite will be blocked from enrolling in courses that require prerequisites.

See <http://www.marin.edu/admissions/> prerequisites for detailed information regarding prerequisites, equivalencies, placement test scores, and challenges.

Automated Waitlist Function

When a class is full, you may place yourself on a waitlist. If a space opens up in the class prior to the first day that the class meets, you will be notified by e-mail that is sent to your MyCOM.marin.edu email account.

AUTOMATED WAITLIST FEATURES:

- You must meet course prerequisites prior to placing yourself on a waitlist.
- You have 72 hours from the date/time that the space availability e-mail is sent to enroll.
- If you do not enroll by the 72 hour deadline, you will automatically be dropped from the waitlist.

- It is important that you log onto the MyCOM Portal on a daily basis prior to the start of the class to check your inbox messages to see if you were sent an e-mail.
- You may not put yourself on a waitlist for more than one section of the same course.
- Once you are on a waitlist for a course, you must drop yourself before enrolling in another section of the same course.
- You may not put yourself on a waitlist that conflicts in time with another course.

Course Conflicts

As a general rule, the State of California prohibits student's attendance in two or more courses which meet at the same or overlapping time for which a California community college will claim funding for that student's attendance. However, it is recognized that without an occasional overlap in schedule, students could be denied the opportunity to complete their studies in a reasonable period of time. In order to accommodate this possibility, College of Marin will permit a student to enroll in overlapping courses if: (a) rationale justification (scheduling convenience is not considered one) on a student-by-student basis can be established and can be documented by the college, and (b) the college maintains documentation that each student made up the hours of overlap in the course (partially or wholly not attended as scheduled) at some other time during the same week under the supervision of the instructor of the course. Students must complete and submit a Time Conflict Petition to the office of Admissions. (Available online on the Admissions page at www.marin.edu or at the Admissions Offices at either campus)

Registration Hours

Online Registration

24 hours a day, 7 days a week
mycom.marin.edu

Fax & Mail Registration

Processed during normal business hours
415.460.0773

Walk-in Registration

Visit www.marin.edu/admissions for regular & expanded registration hours.

Cómo matricularse

La matriculación de prioridad para los estudiantes que continúan comienza el 17 de abril de 2012

Los estudiantes pueden matricularse por Internet en mycom.marin.edu, por fax al 415.460.0773 o personalmente. Después de la matriculación inicial los estudiantes pueden agregar clases a su programa por Internet hasta el primer día de la clase.

Nota: Se recomienda mucho que se matricule en su fecha de matriculación de prioridad ya que tendrá más posibilidades de conseguir los cursos que desee.

Fechas de matriculación de prioridad para los estudiantes que continúan y que retornan

Para determinar su fecha de matriculación si continúa o retorna por favor entre en su cuenta de Portal MyCOM y haga clic en Student, luego en Registration Status en el canal de Registration Tools.

Estudiantes que retornan y nuevos—matricularse en el College of Marin es fácil.

Si nunca se ha matriculado en cursos recibiendo crédito en el College of Marin (en el campus de Kentfield o en el de Indian Valley) o si se está matriculando después de una ausencia de un año o más, por favor siga estos simples pasos para matricularse.

PASO 1

Complete una Solicitud de Admisión.

- Por Internet en mycom.marin.edu;
Nota: Procesar su solicitud de admisión por Internet acelerará su matriculación y aumentará en gran medida sus posibilidades de obtener las clases que desea. El proceso de matriculación se realizará el día siguiente al día en que se matricule.

Nota a estudiantes que retornan: Los estudiantes a quienes se les ha otorgado nombre de usuario y contraseña para MyCOM pueden usar ese nombre y contraseña para entrar en el portal MyCOM. Si los han olvidado, por favor comuníquense con la Oficina de Admisión llamando al 415.457.8811, interno 8822

- O envíe su solicitud por fax al 415.460.0773;
- O por correo a: Oficina de Admisión, College of Marin, 835 College Avenue, Kentfield, CA 94904
- O presente la solicitud personalmente en la Oficina de Admisión en el campus de Kentfield o en el de Indian Valley. Puede bajar una Solicitud de Admisión de http://www.marin.edu/PDFs/85_Cr_Apln_05_08.pdf

Importante: Si presenta su solicitud de admisión en persona, por fax o por correo, deje pasar aproximadamente 5 días después de presentarla antes de inscribirse en las clases. **Nº de identificación del estudiante:** Se les asignará a los estudiantes un número de identificación del College of Marin. **NOTA:** Si usted elige no dar a conocer su número de Seguro Social, no será impreso en su formulario de crédito impositivo 1098T ni en el expediente académico oficial con sus calificaciones. Los estudiantes que solicitan ayuda financiera, beneficios de veteranos y empleo estudiantil en el College deben dar su número de Seguro Social en la Solicitud de Admisión.

PASO 2

Complete la prueba de Orientación y Ubicación.

Para los estudiantes de habla inglesa:

- Obtenga un Nº de identidad del College of Marin.
- Complete la orientación por Internet en www.marin.edu/orientation
- Imprima un Certificado de Conclusión
- Envíelo por fax (415.456.7770) o llévelo a Servicios de Consejeros en KTD, SS 211.
- Llame a la oficina de Pruebas (415.485.9469) o a Servicios de Consejeros (415.485.9436) para concertar sus pruebas de ubicación en matemáticas e inglés en el College of Marin.
- Ver el ejemplo de preguntas previas a la prueba en www.collegeboard.com/student/testing/accuplacer/index.html.

Para los estudiantes de ESL por crédito:

- Obtenga un Nº de identidad del College of Marin.
- Llame a la oficina de Pruebas (415.485.9469) para concertar su asistencia a uno de los talleres de ESL mencionados en la página 7.

PASO 3

Reúnase con un consejero académico.

- Llame a Servicios de Consejeros (415.485.9432) o vaya a KTD, SS 212, para concertar una cita con un consejero.
- Indique que es nuevo y que ya ha completado sus pruebas de orientación y ubicación.

Discuta sus metas académicas, su experiencia educacional previa y desarrolle un plan para seleccionar sus cursos. Exención de los pasos 2 y 3: Puede ser eximido de los pasos 2 y 3 si:

- Tiene ya título de Associate o más alto;
- Ha completado 15 unidades o más en el COM o en otro college o universidad.

PASO 4

Matricúlese para los cursos.

La matriculación para estudiantes de nuevo ingreso comienza el 7 de mayo del 2012. Una vez que haya presentado la solicitud de ad-

Misión, recibirá la Carta de Bienvenida del COM con su nombre de usuario y una contraseña provisional para crear una cuenta de portal de MyCOM. Los estudiantes de nuevo ingreso pueden matricularse en cualquier momento a partir del 7 de mayo de 2012. La Carta de Bienvenida se le enviará por correo electrónico, o por correo convencional si no provee una dirección electrónica.

Tenga en cuenta: debe proveer una dirección de correo electrónico válida para crear una cuenta en el portal estudiantil.

PASO 5

Opción de Lista de Espera.

Cuando una clase esté completa, puede poner su nombre en la lista de espera para matricularse en la clase. Si se desocupa un lugar en la clase, se le notificará por e-mail, enviada a su cuenta en MyCOM.marin.edu. Nuevas características de la Lista de Espera:

- Debe satisfacer los requisitos previos para el curso antes de poner su nombre en la lista de espera.
- Para tener la oportunidad de matricularse tiene que responder al e-mail en menos de 72 horas.
- Si no responde en las 72 horas de plazo su nombre será borrado de la lista de espera.

- Por favor vea información IMPORTANTE sobre la lista de espera en la página 6.

PASO 6**Pague los gastos de matrícula.**

- Por Internet en mycom.marin.edu;
- O personalmente, con tarjeta de crédito VISA o MC, con tarjeta de débito VISA o MC, con cheque personal, dinero en efectivo, cheque bancario o giro postal.

Estudiantes que deben matricularse en persona

Si usted asiste al mismo tiempo a la escuela secundaria, o si ha sido echado, debe matricularse en persona.

Confirmación de matriculación

Puede obtener en cualquier momento una confirmación de su matriculación a través del Portal del estudiante en mycom.marin.edu.

Período de matriculación abierta y de agregar clases

Los estudiantes que no se matricularon en un curso antes del primer día de clase pueden asistir a la primera clase para ver si hay lugar disponible. Los instructores pueden admitir estudiantes dándoles un código de autorización para agregar la clase, y luego los estudiantes deben completar la matriculación por Internet a través del portal del estudiante en mycom.marin.edu, usando el código de

autorización para agregar la clase antes de la fecha de plazo. Por favor vea las fechas de plazo para agregar clases de verano dadas en las páginas 16 y 17.

Notificación importante

A los estudiantes que deben honorarios previos no se les entregarán sus calificaciones y se les prohibirá matricularse en clases hasta que hayan pagado todo lo que deben. Si usted trata de agregar una clase y recibe el siguiente mensaje:

“You may not add or drop classes due to holds on your record”.

Puede averiguar el problema haciendo clic en el vínculo [View Holds] en el Portal.

Student Success Workshop Schedules

Credit ESL Student Success Workshop (Intermediate to Advanced ESL Students) SUMMER 2012

<p>The Credit ESL Student Workshop is an orientation to College of Marin and a Credit English as a Second Language (ESL) Placement Test.</p> <ul style="list-style-type: none"> • Please complete a College of Marin Admissions Application and receive your Student ID # before you schedule your appointment. • You must sign up for a Credit ESL Student Workshop in advance: • By Phone at 415.485.9642 (ESL Office), or 415.485.9432 (Counseling Office), or 415.485.9469 (Assessment and Testing Office) OR • In person at the ESL Office (Harlan Center 101), or at the Counseling Office (Student Services 212), or Assessment and Testing Office (Student Services 238) 	CREDIT ESL STUDENT SUCCESS WORKSHOP / PLACEMENT TEST SCHEDULE (Intermediate to Advanced ESL Students)		
	DATE	CAMPUS / ROOM*	TIME
	Saturday, May 19	KTD / FH 120	9 am – 1 pm
	Thursday, June 14	KTD / FH 120	5–9 pm
	Wednesday, July 18	KTD / LC 150	9 am – 1 pm
	Tuesday, August 7	KTD / FH 120	5–9 pm
	Tuesday, August 14	KTD / FH 120	9 am – 1 pm
	Monday, August 20	KTD / FH 120	5–9 pm
	Saturday, August 25	KTD / LC 150	9 am – 1 pm

* Check in for test 15 minutes before it is scheduled to begin. *Room number subject to change.

Noncredit ESL Student Success Workshop (Beginning to Low-Intermediate ESL Students) SUMMER 2012

<p>The Noncredit ESL Workshop is an orientation to College of Marin and a Noncredit English as a Second Language (ESL) Placement Test.</p> <ul style="list-style-type: none"> • No appointment is necessary for this workshop • Arrive early as there is limited seating • Please see the Noncredit ESL class listing in the back of this schedule • For more information please call 415.485.9642 <p>Examen de Inglés como Segundo Idioma Sin Crédito (para estudiantes de nivel principiante hasta nivel intermedio bajo)</p> <ul style="list-style-type: none"> • Examen de Inglés como Segundo Idioma y orientación sobre College of Marin • No es necesario solicitar una cita • Favor de llegar temprano ya que el cupo es limitado • Favor de ver las clases de Inglés como Segundo Idioma Sin Crédito en la parte posterior de este horario • Para más información favor de llamar al 415.485.9642 	NONCREDIT ESL STUDENT SUCCESS WORKSHOP / PLACEMENT TEST SCHEDULE (Beginning to Low-Intermediate ESL Students / Estudiantes de ESL Principiantes a Intermedio Bajo) Doors open one hour before start time / Puertas abren una hora antes del tiempo de inicio.		
	DATE/FECHA	CAMPUS/PLANTEL ROOM*/SALA*	TIME/HORA
	Saturday, June 2/sábado, junio 2	KTD** / FH 120	9 am – 11:30 am
	Monday, June 11/ lunes, junio 11	KTD / FH 120	6 pm – 8:30 pm
	Saturday, July 28/sábado, julio 28	KTD / FH 120	9 am – 11:30 am
	Thursday, August 2/jueves, agosto 2	KTD / FH 120	6 pm – 8:30 pm
	Wednesday, August 8/miercoles, agosto 8	KTD / FH 120	9 am – 11:30 am
	Monday, August 13/lunes, agosto 13	KTD / FH 120	6 pm – 8:30 pm
	Saturday, October 6, sábado, Octubre 6	KTD / FH 120	9 am – 11:30 am

*Room number subject to change. *La sala esta sujeta a cambios sin previo aviso. **KTD = Kentfield Campus/plantel de Kentfield

Fees, Fee Exemptions, and Waivers

New Convenient Payment Plan To Help You Pay for College Fees

To help you meet your education expenses, College of Marin is pleased to offer Nelnet Business Solutions e-Cashier deferred payment plan. It is not a loan; therefore, you have no debt. Additionally, no interest or finance charges are assessed and there is no credit check.

The cost to budget monthly payments is a \$20 per semester nonrefundable enrollment fee. The enrollment fee is automatically deducted from your account within 14 DAYS of your agreement being posted to the FACTS/NBS system.

Your payment will be automatically deducted on the 5th of each month from a checking or savings account. You must have a minimum balance of \$600 to participate in a monthly payment plan.

To enroll in this convenient payment plan, simply register online through your MyCOM portal account. For additional information regarding paying your enrollment fees please go to <http://www.marin.edu/Admissions/reginfo.htm> or call Nelnet Business Solutions/FACTS at 800.609.8056.

Costs of College

The enrollment and other fees you pay to attend College of Marin and all community colleges in the State are set by the California State Legislature. Fees may be paid by Mastercard/Visa, cash, check, or cashiers check.

Registration Fees

Enrollment Fee.....	\$46/unit
Health Fee	\$12
International Student Application Fee (nonrefundable).....	\$50
Materials Fee	varies
Nonresident, U.S. Citizen Tuition Fee.....	\$198/unit
Nonresident, Non-U.S. Citizen Tuition Fee	\$201/unit
Student Representation Fee	\$1
Student Activities Fee (Optional)	\$8

Fees for Other Services

Credit by Exam	\$46/unit
Document/Verification Fee	\$6
Rush Document/Verification Fee	\$15
Parking Fee	\$3/daily, \$50/semester
Returned Checks/Declined VISA/ Mastercard or Debit Card Fee.....	\$15
Service Fee for Processing Refunds and Deferred Fees for Dropped Classes.....	\$10
Transcript Fee (first 2 copies free)	\$6
Rush Transcript Fee (next business day)	\$15

Please note:

- Transcripts will be delayed until all delinquencies are cleared.
- Returned check/credit card delinquencies may not be paid with another personal check, but must be cleared with cash, money order, or cashier's check.
- In addition to the above fees, students must purchase their own books and supplies. Fees are subject to change without notice.

Student Representation Fee

Money collected for the student representation fee shall be expended to provide support for students or representatives who may be stating their positions and viewpoints before city, county, and district government, and before offices and agencies of the state and federal government.

Students have the right to refuse to pay the fee for religious, political, moral or financial reasons. A Student Representation Fee Waiver Form must be submitted at the time of registration for each semester in which the student does not wish to pay this fee.

Student Activities Fee

Money collected for the student activities fee shall be expended to provide support for educational and social events for the campus community and to support campus clubs and organizations, student related activities and intercollegiate athletics.

Students have the right to refuse to pay this optional fee. A Student Activities Fee Waiver Form must be submitted at the time of registration for each semester in which the student does not wish to pay this fee.

Fees Paid by an Agency

If an agency or program is to pay your fees, a voucher or "authorization to bill" must be provided at the time of registration. Remember to keep a copy of the voucher or authorization. College of Marin will invoice the agency or program within the appropriate time lines.

Military Fee Exemption

Dependents of deceased/disabled veterans (with an eligibility letter) will only be charged materials fees, if applicable.

Contact your local county Veterans Services Office (located in the "Government Listings" section of your telephone book under "County Government Offices") to obtain applications, information, and how to apply for benefits under this program.

California Nonresident Exemption/ AB540

Students not otherwise eligible for resident status who have attended a California high school for three years and graduated may apply for an AB 540 fee exemption. Students must complete the California Nonresident Exemption Request form.

Tax Credit

Eligibility

In accordance with federal tax credit legislation, College of Marin will mail a verification 1098T form at the end of January to each student registered at least half-time on census day who has paid registration fees.

Please check with your tax preparer to determine if you are eligible to take advantage of this credit.

Change of Address

For tax credit and other important communications from the college, it is important that the college have your current address. If you have moved, you may update your address and phone number through your MyCOM portal account or by completing and submitting a green change form to the Office of Admissions and Records.

Social Security Numbers

Social security numbers of students who have chosen not to disclose their social security number will not be printed on the 1098T.

Enrollment Fee Waivers

Board of Governors

See page 11 for BOGW form. Students required to pay out-of-state fees or who receive an AB 540 fee exemption are not eligible. The California Community Colleges Board of Governors provides a waiver of enrollment fees for students who are residents of the State of California and meet one or more of the following criteria:

1. Student or student's family receives TANF, SSI, or General Assistance benefits.
2. Income for 2011 was below the limits identified in the table.
3. Student files Financial Aid Application and is determined eligible by the Financial Aid Office.

Financial Aid and Fee Waiver information is available in Spanish. All Financial Aid Students are still required to pay any materials fees and the health fee. Contact the Financial Aid Office at 415.485.9409 for additional information.

The above information is subject to change in the event of new federal or state regulations.

2012/2013 Income Standards* for BOGFW Part B Eligibility

Family Size	2011 Income
1	\$16,335
2	\$22,065
3	\$27,793
4	\$33,525
5	\$39,255
6	\$44,985
7	\$50,715
8	\$56,441
For each additional family member	Add \$5,730

*These standards are based upon the federal poverty guidelines as published each year by the U.S. Department of Health and Human Services. Per Title 5 of the California Code of Regulations, the Income Standards for the bogfw program equal 150 percent of the federal poverty guidelines for the base year. Additional information on the poverty guidelines can be obtained from <http://aspe.hhs.gov/poverty/00poverty.htm>

Refund Policy

Refund Service Fee

A \$10 per semester service fee and any outstanding balance due the college will be deducted from all refunds. No service fee is charged if the class is cancelled by the college. **The service fee also applies to students who drop classes when fees have not been paid.**

Summer Classes

In accordance with state law, refund requests for short-term classes will be granted if the class is dropped before completion of 10 percent of the course. See Summer Classes Deadline dates on pages 16-17.

Materials Fees

Provided that no materials have been used, refund of materials fees will be granted before completion of 10 percent of the class for short-term classes. **Please note that Financial Aid Fee Waivers do not cover health or materials fees.**

Financial Aid Students

Prior to refunding any enrollment fee or tuition, the district may determine if the student received federal Title IV funds during the term of enrollment. If funds were received, the refund may be held up to 30 days while the district determines if any institutional or student return to the federal Title IV programs is due under Section 485 of the Higher Education Amendments of 1998, P.L. 105-244.

If a return is deemed to be required, the amount of enrollment fee refund may first be used to meet any return obligation of the district and, if an amount of enrollment fee refund remains after the district obligation has been met, that amount may be used to meet any return obligation of the student.

If an enrollment fee refund amount remains after all return obligations have been met, the student shall receive the remainder.

Nonresident Tuition Refunds

See Summer classes Deadline dates on page 16-17 for refund deadlines.

Parking Permit Refund

Students may request a refund of Term Parking Permit Fees under the following conditions:

- The college has canceled a class and the student is no longer enrolled in any credit, noncredit, community education or emeritus college class.
- The student has dropped all classes on or before the last day to qualify for a fee refund or by the 10 percent point of the length of a class for a short-term class. Note: The Parking Permit Sticker must be returned to the Office of Admissions & Records when requesting the refund.

Illegal Distribution of Copyrighted Materials

College of Marin students are prohibited from using the college's information network to illegally download or share music, video, and all other copyrighted intellectual property. College of Marin supports the Higher Education Opportunity Act and Digital Millennium Copyright Act, including efforts to eliminate the illegal distribution of copyrighted material. Under the law, college administrators may be obligated to provide copyright holders with information about users of the college's information network who have violated the law.

Be aware that illegal forms of downloading and file sharing, as well as the unauthorized distribution of copyrighted materials, are violations of the law and may subject you to academic sanctions from the college as well as criminal and civil penalties, including a lawsuit against you by the Recording Industry Association of America (RIAA). Learn more at www.campusdownloading.com. In addition to being illegal, file sharing drains the network bandwidth, which slows computer connections for students and employees who are using the network for legitimate academic purposes and ultimately costs the college money. There are plenty of easy, affordable ways to get music online legally. For a list of sources that offer legal downloading sites, access www.riaa.com

Financial Aid

Need help with enrollment fees? Contact the College of Marin Financial Aid Office for additional information on fee waivers and other financial aid programs. Call 415.485.9409 or 415.883.2211 ext. 8118 or e-mail financial.aid@marin.edu.

Student Financial Assistance

All students enrolling or wishing to enroll in an academic or vocational program at College of Marin may apply for financial assistance. Students meeting financial and other eligibility requirements receive funds from a variety of federal, state, and community programs to help cover school and living expenses. College of Marin offers students funding from the following programs.

Financial Aid Application Deadline

Applications are still being accepted for this term. Apply for summer 2012 online www.fafsa.ed.gov.

Financial Aid Programs/ Grants and Scholarships

Federal Pell Grants

Grants range from \$400 to \$5,550 per year depending on eligibility. Limited to six years of use.

Federal Supplemental Educational Opportunity Grants (SEOG)

Grants range from \$400 to \$2,000 per year for students with the highest financial need who also qualify for Pell Grants.

Extended Opportunity Programs & Services Grants (EOPS)

This program provides book grants and counseling services to students who qualify. (See page 100 for additional information.)

Board of Governors Fee Waivers (BOGW)

Eligible California residents receive a waiver of enrollment. See additional information on page 8, and for your convenience a BOGW form is on page 11.

Cal Grants

The State of California provides grants ranging from \$530 to \$1550 per year for eligible students.

Apply online for Financial Aid

Free application for Federal Student Aid at www.fafsa.ed.gov

10,000 Degrees Grants

Residents of Marin County may apply for 10,000 Degrees grants ranging from \$400 to \$4,000 per year. For more information call 415.459.4240.

College of Marin Foundation Scholarships

The College of Marin Foundation solicits funding from the community for scholarships that are awarded to students who meet need and academic criteria. Scholarships range from \$250 to \$1000 per year and are available to students who are transferring to a four-year institution or continuing at COM. For more information call 415.485.9382.

Federal Student Loans

Student Loans Must Be Repaid

Before considering a student loan, it is important to develop a financing plan for your education that takes into account the total amount of debt that you will be able to afford to repay when you reach your final educational goal.

Subsidized Stafford Student Loans

Students who qualify on the basis of financial need may borrow up to \$3500 per year for freshman year and up to \$4500 per year for sophomore year at a variable interest rate. Principal and interest are deferred until six months after the last day of enrollment as at least a half-time student in an educational program.

Unsubsidized Stafford Student loans

Independent students who do not meet financial need criteria for a Subsidized Stafford Loan or need additional loan assistance may borrow all or part of that amount under the Unsubsidized Stafford Loan Program up to \$6,000 per year. Interest becomes due when the loan is borrowed. Principal is deferred until six months after the student ceases to be enrolled at least half-time in an educational program.

Work Programs

Federal College Work-Study Program

Federal funds provide a limited number of part-time jobs on campus for students who qualify. Some jobs are available off campus. Students work up to 25 hours per week.

Job Placement Office

The Job Placement Office provides students with information on a large number of jobs that are available throughout the community.

Work Experience

Students may enroll in Work Experience classes to obtain credit for current employment.

Additional Financial Assistance

Application Procedures

Students must file a Federal Student Aid Application [Free Application for Federal Student Aid (FAFSA)]. Some programs [Marin Education Fund (MEF), COM Foundation Scholarships, Cal Grants, loan programs] may have additional application forms. Once the initial form is filed, the Financial Aid Office may request additional forms and verifying documentation. The FAFSA is available at www.fafsa.ed.gov. Forms for the next academic year are available in January.

Additional Information

For paper application forms and additional information, please contact the Financial Aid Office at either the Kentfield Campus or the Indian Valley Campus.

College of Marin Emergency Loans

Associated Students College of Marin (ASCOM) and the College of Marin Foundation have provided funds for the college's emergency loan program. Thirty-day loans are available for up to \$100 for students who qualify.

Tax Credit

For tax credit information see page 8.

California Community Colleges 2011-2012 Board of Governors Fee Waiver Application

This is an application to have your **ENROLLMENT FEES WAIVED**. This **FEE WAIVER** is for California residents only. If you need money to help with books, supplies, food, rent, transportation and other costs, please complete a **FREE APPLICATION FOR FEDERAL STUDENT AID (FAFSA)** immediately. Contact the Financial Aid Office for more information. **The FAFSA is available at www.fafsa.ed.gov or at the Financial Aid Office.**

Note: Students who are exempt from paying nonresident tuition under **Education Code Section 68130.5 (AB 540)** are NOT California residents. If you are NOT a California resident, you are not eligible for a fee waiver. Do not complete this application. You may apply for financial aid by completing the FAFSA.

Name: _____	Student ID # _____
<i>Last First Middle Initial</i>	
Email (if available): _____	Telephone Number: (____) _____
Home Address: _____	Date of Birth: _____ / _____ / _____
<i>Street City Zip Code</i>	
Has the Admissions or Registrar's Office determined that you are a California resident? <input type="checkbox"/> Yes <input type="checkbox"/> No	

IMPLEMENTATION OF THE CALIFORNIA DOMESTIC PARTNER RIGHTS AND RESPONSIBILITIES ACT

The California Domestic Partner Rights and Responsibilities Act extends new rights, benefits, responsibilities and obligations to individuals in domestic partnerships registered with the California Secretary of State under Section 297 of the Family Code. If you are in a Registered Domestic Partnership (RDP), you will be treated as an Independent married student to determine eligibility for this Enrollment Fee Waiver and will need to provide income and household information for your domestic partner. If you are a dependent student and your parent is in a Registered Domestic Partnership, you will be treated the same as a student with married parents and income and household information will be required for the parent's domestic partner.

Note: These provisions apply to state student financial aid ONLY, and not to federal student financial aid.

Are you or your parent in a Registered Domestic Partnership with the California Secretary of State under Section 297 of the Family Code? (Answer "Yes" if you or your parent are separated from a Registered Domestic Partner but have **NOT FILED** a Notice of Termination of Domestic Partnership with the California Secretary of State's Office.) Yes No

If you answered "Yes" to the question above treat the Registered Domestic Partner as a spouse. You are required to include your domestic partner's income and household information or your parent's domestic partner's income and household information in Questions 4, 11, 12, 13, 14, 15, 16, 17.

Student Marital Status: Single Married Divorced Separated Widowed Registered Domestic Partnership

DEPENDENCY STATUS

The questions below will determine whether you are considered a Dependent student or Independent student for fee waiver eligibility and whether parental information is needed. If you answer "Yes" to **ANY** of the questions 1-10 below, you will be considered an INDEPENDENT student. If you answer "No" to all questions, you will be considered a Dependent student thereby reporting parental information and should continue with Question 11.

1. Were you born before January 1, 1988? (If "Yes," skip to question 13) Yes No
2. As of today, are you married **or** in a Registered Domestic Partnership (RDP)?
(Answer "Yes" if you are separated but not divorced or have not filed a termination notice to dissolve partnership. If you answer "Yes," skip to question 13.) Yes No
3. Are you a veteran of the U.S. Armed Forces **or** currently serving on active duty for purposes other than training? (If "Yes," skip to question 13) Yes No
4. Do you have children who will receive more than half of their support from you between July 1, 2011-June 30, 2012, **or** other dependents who live with you (other than your children or spouse/RDP) who receive more than half of their support from you, now and through June 30, 2012? (If "Yes," skip to question 13) Yes No
5. At any time since you turned age 13, were both your parents deceased, were you in foster care, or were you a dependent or ward of the court? (If "Yes," skip to question 13) Yes No
6. Are you or were you an emancipated minor as determined by a court in your state of legal residence?
(If "Yes," skip to question 13) Yes No

DEPENDENCY STATUS (Continued)

7. Are you or were you in legal guardianship as determined by a court in your state of legal residence?
(If "Yes," skip to question 13) Yes No
8. At any time on or after July 1, 2010, did your high school or school district homeless liaison determine that you were an unaccompanied youth who was homeless? (If "Yes," skip to question 13) Yes No
9. At any time on or after July 1, 2010, did the director of an emergency shelter or transitional housing program funded by the U.S. Department of Housing and Urban Development determine that you were an unaccompanied youth who was homeless?
(If "Yes," skip to question 13) Yes No
10. At any time on or after July 1, 2010, did the director of a runaway or homeless youth basic center or transitional living program determine that you were an unaccompanied youth who was homeless or were self-supporting and at risk of being homeless?
(If "Yes," skip to question 13) Yes No

• If you answered "Yes" to any of the questions 1 - 10, you are considered an **INDEPENDENT** student for enrollment fee waiver purposes and must provide income and household information about yourself (and your spouse or RDP if applicable). Skip to Question #13.

• If you answered "No" to all questions 1 - 10, complete the following questions:

11. If your parent(s) or his/her RDP filed or will file a 2010 U.S. Income Tax Return, were you, or will you be claimed on their tax return as an exemption by either or both of your parents? Will Not File Yes No
12. Do you live with one or both of your parent(s) and/or his/her RDP? Yes No

• If you answered "No" to questions 1 - 10 and "Yes" to either question 11 or 12, you must provide income and household information about your **PARENT(S)/RDP**. Please answer questions for a **DEPENDENT** student in the sections that follow.

• If you answered "No" or "Parent(s) will not file" to question 11, and "No" to question 12, you are a dependent student for all student aid except this enrollment fee waiver. You may answer questions as an **INDEPENDENT** student on the rest of this application, but please try to get your **PARENT** information and file a FAFSA so you may be considered for other student aid. You cannot get other student aid without your parent(s)' information.

METHOD A ENROLLMENT FEE WAIVER

13. Are you (the student **ONLY**) currently receiving monthly cash assistance for yourself or any dependents from:
- TANF/CalWORKs? Yes No
- SSI/SSP (Supplemental Security Income/State Supplemental Program)? Yes No
- General Assistance? Yes No
14. If you are a dependent student, are your parent(s)/RDP receiving monthly cash assistance from TANF/CalWORKs or SSI/SSP as a primary source of income? Yes No

• If you answered "Yes" to question 13 or 14 you are eligible for an **ENROLLMENT FEE WAIVER**. Sign the Certification at the end of this form. You are required to show current proof of benefits. Complete a FAFSA to be eligible for other financial aid opportunities.

METHOD B ENROLLMENT FEE WAIVER

15. **DEPENDENT STUDENT:** How many persons are in your parent(s)/RDP household? (Include yourself, your parent(s)/RDP, and anyone who lives with your parent(s)/RDP and receives more than 50% of their support from your parents/RDP, now and through June 30, 2012.) _____
16. **INDEPENDENT STUDENT:** How many persons are in your household? (Include yourself, your spouse/RDP, and anyone who lives with you and receives more than 50% of their support from you, now and through June 30, 2012.) _____
17. **2010 Income Information**

(Dependent students should not include their income information for Q 17 a and b below.)	DEPENDENT STUDENT: PARENT(S)/ RDP INCOME ONLY	INDEPENDENT STUDENT: STUDENT (& SPOUSE'S/ RDP) INCOME
a. Adjusted Gross Income (If 2010 U.S. Income Tax Return was filed, enter the amount from Form 1040, line 37; 1040A, line 21; 1040EZ, line 4).	\$ _____	\$ _____
b. All other income (Include ALL money received in 2010 that is not included in line (a) above (such as disability, child support, military living allowance, Workman's Compensation, untaxed pensions).	\$ _____	\$ _____
TOTAL Income for 2010 (Sum of a + b)	\$ _____	\$ _____

The Financial Aid Office will review your income and let you know if you qualify for an ENROLLMENT FEE WAIVER under Method B. If you do not qualify using this simple method, you should file a FAFSA.

SPECIAL CLASSIFICATIONS ENROLLMENT FEE WAIVERS

18. Do you have certification from the CA Department of Veterans Affairs that you are eligible for a dependent's fee waiver?
Submit certification. Yes No
19. Do you have certification from the National Guard Adjutant General that you are eligible for a dependent's fee waiver?
Submit certification. Yes No
20. Are you eligible as a recipient of the Congressional Medal of Honor or as a child of a recipient?
Submit documentation from the Department of Veterans Affairs. Yes No
21. Are you eligible as a dependent of a victim of the September 11, 2001, terrorist attack?
Submit documentation from the CA Victim Compensation and Government Claims Board. Yes No
22. Are you eligible as a dependent of a deceased law enforcement/fire suppression personnel killed in the line of duty?
Submit documentation from the public agency employer of record. Yes No
- If you answered "Yes" to any of the questions from 18-22, you are eligible for an ENROLLMENT FEE WAIVER and perhaps other fee waivers or adjustments. Sign the Certification below. Contact the Financial Aid Office if you have questions.

Who May Enroll

College of Marin Serves Students of All Ages with or without a High School Diploma

Anyone 18 years of age or older, with or without a high school diploma, is eligible to enroll at College of Marin. For information concerning enrollment of students under age 18, call the Office of Admissions and Records or the Counseling Department.

High School Students

Advanced Scholastic and Vocational Programs

College of Marin has a special program which allows students attending high school to enroll in college courses in advanced scholastic and vocational programs before earning their high school diploma. Concurrently enrolled students are restricted from credit physical education classes, and remedial classes numbered below 100.

In Person Registration

Each term a high school student must submit a completed College Credit Program (CCP) form signed by a parent, high school principal or designee, and college counselor to the Office of Admissions and Records. New students must submit a Credit Application for Admissions.

No Enrollment Fee

Concurrently enrolled high school students will not be charged the Enrollment Fee. High school students who are not legal residents of the State will be subject to nonresident tuition charges.

Medical Insurance

Medical insurance is required and payable with class registration. The cost of annual medical insurance will be approximately \$1088. A refund, less a service fee, of the medical insurance will be issued for students who withdraw from the college through the second week of the semester as long as no benefits were used.

Intensive English

Students scoring below 500 on the TOEFL can contact the International Student not-for-credit Intensive English Program, phone 415.457.8811, ext. 8822 or e-mail paulette.foster@marin.edu. Applications for the program are at www.marincommunityed.org.

Residence Information

In general, to be considered a California resident for tuition purposes, a student must have lived continuously in California for one year immediately preceding the residence determination date of June 17, 2012.

The student must also provide evidence (as defined by California Education Code) proving the student's intention to make California the student's permanent home. Documented intent must start at least one year before the residency determination date. Non-U.S. Citizens on certain visas are ineligible to enroll in credit classes. Please review the college catalog for more information.

Student's Right to Privacy

Occasionally, College of Marin receives requests from various entities or private persons seeking directory information on our students. These entities can be public, private, or governmental in origin, e.g., private scholarship search companies, public and private colleges and universities, U.S. Military (Department of Defense and others).

Directory Information Defined

Directory information is defined as information contained in an educational record of a student which would not generally be considered harmful or an invasion of privacy if disclosed. It includes, but is not limited to, the student's name, address, telephone listing, date and place of birth, level of education, major field of study, participation in officially recognized activities and sports, weight and height if a member of an athletic team, dates of attendance, degrees and awards received, and most recent previous educational agency or institution attended.

Release of Directory Information

Directory information may be released at the discretion of the college; however, under Federal and State law, a student has the right to request that College of Marin withhold directory information on behalf of the student.

Once a request is made, directory information will be withheld from all entities. The college assumes no liability for honoring a student's request that such information be withheld.

Request to Withhold Directory Information

A request to withhold directory information must be directed to the Dean of Enrollment Services in writing. The request must be signed and dated by the student. Students may also come to the Admissions and Records Office at the Kentfield Campus or Indian Valley Campus and complete a Request to Withhold Directory Information form. Forms are available online at: <http://www.marin.edu/admissions/index.htm>

Summer Classes Deadline Dates

After the session begins, short-term classes may be added online or in-person until the first class meeting without an instructor's approval. Students registering after the first class meeting must obtain an add code from the instructor and add the class online or in-person by the Last Day to Add.

Course ID	CRN	Refund Date	Last Day to Add	Request drop w/out W & P/NP	Last Drop w/W
ACRT 160A	60114	06/19/12	06/20/12	06/26/12	07/17/12
ACRT 160A	60115	06/19/12	06/20/12	06/26/12	07/17/12
ACRT 160B	60116	06/19/12	06/20/12	06/26/12	07/17/12
ACRT 160B	60117	06/19/12	06/20/12	06/26/12	07/17/12
ACRT 160C	60118	06/19/12	06/20/12	06/26/12	07/17/12
ACRT 160C	60119	06/19/12	06/20/12	06/26/12	07/17/12
ACRT 160D	60120	06/19/12	06/20/12	06/26/12	07/17/12
ACRT 160D	60121	06/19/12	06/20/12	06/26/12	07/17/12
ACRT 160E	60122	06/19/12	06/20/12	06/26/12	07/17/12
ACRT 160E	60123	06/19/12	06/20/12	06/26/12	07/17/12
ANTH 102	60001	06/20/12	06/21/12	06/27/12	07/18/12
ART 130	60484	06/19/12	06/25/12	06/27/12	07/17/12
ART 131	60524	06/19/12	06/25/12	06/27/12	07/17/12
ART 170	60526	06/19/12	06/25/12	06/27/12	07/17/12
ART 171	60527	06/19/12	06/25/12	06/27/12	07/17/12
ART 249A	60471	06/20/12	06/25/12	06/28/12	07/18/12
ART 249B	60472	06/20/12	06/25/12	06/28/12	07/18/12
ART 249C	60473	06/20/12	06/25/12	06/28/12	07/18/12
ART 270	60528	06/19/12	06/25/12	06/27/12	07/17/12
ART 271	60529	06/19/12	06/25/12	06/27/12	07/17/12
ART 276	60530	06/19/12	06/25/12	06/27/12	07/17/12
AUTO 110	60135	06/21/12	06/26/12	06/28/12	07/19/12
AUTO 111	60136	06/20/12	06/23/12	06/27/12	07/18/12
AUTO 249B	60360	06/20/12	06/25/12	06/28/12	07/18/12
AUTO 249C	60361	06/20/12	06/25/12	06/28/12	07/18/12
BIOL 110	60059	06/20/12	06/21/12	06/27/12	07/18/12
BIOL 110	60424	06/09/12	06/12/12	06/19/12	07/14/12
BIOL 110L	60060	06/20/12	06/21/12	06/27/12	07/18/12
BIOL 110L	60061	06/20/12	06/21/12	06/27/12	07/18/12
BIOL 110L	60427	06/09/12	06/14/12	06/21/12	07/14/12
BIOL 247B	60531	05/25/12	05/25/12	05/25/12	05/29/12
BUS 127	60514	06/20/12	06/25/12	06/28/12	07/18/12
CHEM 110	60067	06/13/12	06/19/12	06/25/12	07/19/12
CHEM 114	60068	06/19/12	06/25/12	06/27/12	07/17/12
CHEM 132	60069	06/19/12	06/25/12	06/27/12	07/17/12
CHEM 132E	60070	06/19/12	06/25/12	06/27/12	07/17/12
CIS 101	60486	06/19/12	06/21/12	06/28/12	07/17/12
CIS 101	60513	06/19/12	06/19/12	06/26/12	07/17/12
CIS 110	60010	06/20/12	06/25/12	06/28/12	07/18/12
COMM 160	60479	06/19/12	06/20/12	06/26/12	07/17/12
COUR 115F	60355	06/20/12	06/25/12	06/28/12	07/18/12
COUR 115J	60356	06/20/12	06/25/12	06/28/12	07/18/12
COUR 115S	60357	06/20/12	06/25/12	06/28/12	07/18/12

Course ID	CRN	Refund Date	Last Day to Add	Request drop w/out W & P/NP	Last Drop w/W
COUR 125F	60364	06/20/12	06/25/12	06/28/12	07/18/12
COUR 125J	60365	06/20/12	06/25/12	06/28/12	07/18/12
COUR 125S	60369	06/20/12	06/25/12	06/28/12	07/18/12
COUR 150F	60380	06/20/12	06/25/12	06/28/12	07/18/12
COUR 150J	60383	06/20/12	06/25/12	06/28/12	07/18/12
COUR 150S	60384	06/20/12	06/25/12	06/28/12	07/18/12
COUR 175F	60390	06/20/12	06/25/12	06/28/12	07/18/12
COUR 175J	60391	06/20/12	06/25/12	06/28/12	07/18/12
COUR 175S	60392	06/20/12	06/25/12	06/28/12	07/18/12
DENT 192	60030	05/29/12	06/01/12	06/04/12	06/14/12
DENT 192A	60031	05/30/12	05/30/12	05/30/12	06/13/12
DENT 192AL	60032	05/30/12	05/30/12	05/30/12	06/13/12
ECE 135	60498	06/18/12	06/20/12	06/25/12	07/16/12
ECE 220A	60497	06/19/12	06/21/12	06/28/12	07/17/12
ECON 101	60022	06/20/12	06/21/12	06/27/12	07/18/12
ENGL 070	60504	06/20/12	07/24/12	06/28/12	07/18/12
ENGL 071	60505	06/20/12	07/24/12	06/28/12	07/18/12
ENGL 072	60506	06/20/12	07/24/12	06/28/12	07/18/12
ENGL 073	60507	06/20/12	07/24/12	06/28/12	07/18/12
ENGL 074	60508	06/20/12	07/24/12	06/28/12	07/18/12
ENGL 075	60509	06/20/12	07/24/12	06/28/12	07/18/12
ENGL 076	60510	06/20/12	07/24/12	06/28/12	07/18/12
ENGL 077	60511	06/20/12	07/24/12	06/28/12	07/18/12
ENGL 078	60381	06/20/12	07/24/12	06/28/12	07/18/12
ENGL 079	60512	06/20/12	07/24/12	06/28/12	07/18/12
ENGL 098	60298	06/19/12	06/25/12	06/26/12	07/17/12
ENGL 120	60129	06/19/12	06/25/12	06/27/12	07/17/12
ENGL 120	60300	06/19/12	06/20/12	06/26/12	07/17/12
ENGL 150	60132	06/20/12	06/25/12	06/28/12	07/18/12
ENGL 150	60133	06/19/12	06/20/12	06/26/12	07/17/12
ENGL 150	60342	06/19/12	06/25/12	06/27/12	07/17/12
ENGL 151	60166	06/20/12	06/25/12	06/28/12	07/18/12
ENGL 151	60267	06/19/12	06/25/12	06/27/12	07/17/12
ENGL 151	60343	06/19/12	06/25/12	06/27/12	07/17/12
ESL 060	60079	06/20/12	06/21/12	06/27/12	07/18/12
ESL 068	60503	06/20/12	06/21/12	06/27/12	07/18/12
ETST 112	60023	06/20/12	06/21/12	06/27/12	07/18/12
FIRE 215	60515	06/04/12	06/06/12	06/13/12	07/11/12
GEOL 127B	60532	04/27/12	04/27/12	04/27/12	05/04/12
HED 130	60016	06/20/12	06/25/12	06/28/12	07/18/12
HIST 100	60024	06/20/12	06/25/12	06/28/12	07/18/12
ITAL 101	60112	06/19/12	06/25/12	06/27/12	07/17/12
JOUN 160	60480	06/19/12	06/20/12	06/26/12	07/17/12

Course ID	CRN	Refund Date	Last Day to Add	Request drop w/out W & P/NP	Last Drop w/W
MATH 095X	60465	06/20/12	07/24/12	06/28/12	07/18/12
MATH 095Y	60467	06/20/12	07/24/12	06/28/12	07/18/12
MATH 101	60086	06/19/12	06/25/12	06/27/12	07/17/12
MATH 101X	60401	06/20/12	07/24/12	06/28/12	07/18/12
MATH 101Y	60403	06/20/12	07/24/12	06/28/12	07/18/12
MATH 103	60090	06/19/12	06/25/12	06/27/12	07/17/12
MATH 103X	60405	06/20/12	07/24/12	06/28/12	07/18/12
MATH 103Y	60408	06/20/12	07/24/12	06/28/12	07/18/12
MATH 104Y	60412	06/20/12	07/24/12	06/28/12	07/18/12
MATH 109	60096	06/19/12	06/25/12	06/27/12	07/17/12
MATH 115	60414	06/19/12	06/25/12	06/27/12	07/17/12
MATH 121	60099	06/19/12	06/25/12	06/27/12	07/17/12
MEDA 210L	60499	07/10/12	07/11/12	07/16/12	07/26/12
MUS 191	60107	05/13/12	05/20/12	05/27/12	06/14/12
MUS 193	60108	05/13/12	05/20/12	05/27/12	06/14/12
MUS 193	60109	05/13/12	05/20/12	05/27/12	06/14/12
MUS 262	60523	05/10/12	05/16/12	05/22/12	06/15/12
PE 070	60260	06/19/12	06/25/12	06/27/12	07/17/12
PE 072	60261	06/19/12	06/25/12	06/27/12	07/17/12
PE 074	60500	06/19/12	06/25/12	06/27/12	07/17/12

Course ID	CRN	Refund Date	Last Day to Add	Request drop w/out W & P/NP	Last Drop w/W
PE 125H	60327	06/19/12	06/25/12	06/27/12	07/17/12
PE 156	60386	06/19/12	06/25/12	06/27/12	07/17/12
PE 169	60018	06/19/12	06/25/12	06/27/12	07/17/12
PE 169	60483	06/19/12	06/25/12	06/27/12	07/17/12
PE 249A	60389	06/20/12	06/25/12	06/28/12	07/18/12
PHIL 110	60162	06/19/12	06/25/12	06/27/12	07/17/12
POLS 100	60028	06/20/12	06/21/12	06/27/12	07/18/12
SOC 110	60004	06/19/12	06/20/12	06/26/12	07/17/12
SPAN 101	60125	06/19/12	06/25/12	06/27/12	07/17/12
SPAN 101	60126	06/19/12	06/25/12	06/27/12	07/17/12
SPCH 110	60052	06/19/12	06/20/12	06/26/12	07/17/12
SPCH 120	60053	06/19/12	06/20/12	06/26/12	07/17/12
WE 298A	60516	06/19/12	06/19/12	06/26/12	07/17/12
WE 298B	60517	06/19/12	06/19/12	06/26/12	07/17/12
WE 298C	60518	06/19/12	06/19/12	06/26/12	07/17/12
WE 298D	60519	06/19/12	06/19/12	06/26/12	07/17/12
WE 299A	60520	06/19/12	06/19/12	06/26/12	07/17/12
WE 299B	60521	06/19/12	06/19/12	06/26/12	07/17/12
WE 299C	60522	06/19/12	06/19/12	06/26/12	07/17/12

Skills Certificates

Less Than 18 Unit Credit Skills Certificates

Skills Certificates may be part of a "ladder" of skills, beginning with job entry skills and leading to a full Certificate of Achievement Program or may constitute a skill set that enables a student to upgrade or advance in an existing career. Skills Certificates are shorter in duration and narrower in scope than the Certificate of Achievement that provides full preparation for employment in a career. Contact the specific department for detailed information.

Business and Information Systems Department Skills Certificates

Business/Business Office Systems

Administrative Assistant, 5 units
Management and Supervision, 9 units
Medical Transcriber, 8 units

Computer Information Systems

Desktop A+ Centered, 7.5 units
Microsoft Access Database, 4.5 units
Microsoft Office Database Specialist, 6.5 units

Microsoft Office Specialist, 6 units
Network Security, 7.5 units
Web Programming, 4.5 units

Real Estate

Real Estate Appraisal, 9 units
Real Estate Finance, 9 units
Real Estate Law, 9 units
Real Estate Property Management, 9 units

Career Education Department Skills Certificates

Automotive Technology

Automotive Service Advisor, 13 units
Brakes and Suspension, 13 units
Drive Trains, 15 units
Electrical/Performance, 17 units
Engine Repair, 11 units
Heating and Air Conditioning, 9.5 units

Multimedia Studies

Multimedia 3-D, 9 units
Multimedia Foundation, 9 units
Multimedia Print Design, 12 units
Multimedia Video Production, 9 units
Multimedia Web Authoring, 9 units

Health Sciences Department Skills Certificates

Early Childhood Education Core, 12 units
Emergency Medical Technician Training Course, 6 units

IV Insertion: Demonstrated competency and completion of NE 203 and 225L (must be enrolled in RN Program)
Medical Terminology, 6 units
MediSoft, 5.5 units

Life and Earth Sciences Department Skills Certificate

Environmental Science, 16 units

Physical Education Department Skills Certificate

Personal Fitness Trainer, 17.5 units

Social Science Department Skills Certificate

Education, 6 units

Course Listings

ANTHROPOLOGY 18
 ART 18
 AUTOMOTIVE COLLISION REPAIR
 TECHNOLOGY 19
 AUTOMOTIVE TECHNOLOGY 20
 BIOLOGY 20
 CHEMISTRY 21
 COMMUNICATIONS 21
 COMPUTER INFORMATION SYSTEMS 21
 COURT REPORTING 21
 DENTAL ASSISTING; REGISTERED 22
 DISTANCE EDUCATION 32
 EARLY CHILDHOOD EDUCATION 23
 ECONOMICS 23
 ENGLISH 23
 ENGLISH AS A SECOND LANGUAGE 26
 ESL VOCATIONAL 32
 ETHNIC STUDIES 26
 FIRE TECHNOLOGY 26
 GEOLOGY 27
 HEALTH EDUCATION 27
 HISTORY 27
 INTERNET COURSES 33
 ITALIAN 27
 JOURNALISM 27
 MATHEMATICS 27
 MEDICAL ASSISTING 29
 MUSIC 29
 NONCREDIT COURSES 31
 PHILOSOPHY 29
 PHYSICAL EDUCATION 29
 POLITICAL SCIENCE 30
 SOCIOLOGY 30
 SPANISH 30
 SPEECH 30
 VIDEO COURSE 33
 WORK EXPERIENCE EDUCATION 30

ANTHROPOLOGY

ANTH 102 **3.0 Units**
Introduction to Cultural Anthropology
 A survey of human behavior using a cross-cultural perspective looking at belief systems, customs, socialization, and related topics with an emphasis upon non-Western societies both contemporary and traditional. Transfer Credit: CSU/UC
 60001 J Park
 Lec TWR 10:30am-1:20pm, KTD/OH105

ART

Develop Your Drawing Skills



ART 130 **4.0 Units**
Drawing and Composition I
 The development of drawing skills, form, light and shadow, composition and perspective. Exploration of graphic approaches and materials; both traditional and experimental means of expression will be examined. Required of all art majors. A nonobligatory donation of \$20 will be requested at the first meeting to help pay model fees. Transfer Credit: CSU/UC (Material Fee: \$15)
 60484 C Lefkowitz
 Lec MTWR 9:00am-12:00pm, KTD/FA214
 Lab MTWR 12:10pm-1:25pm, KTD/FA214

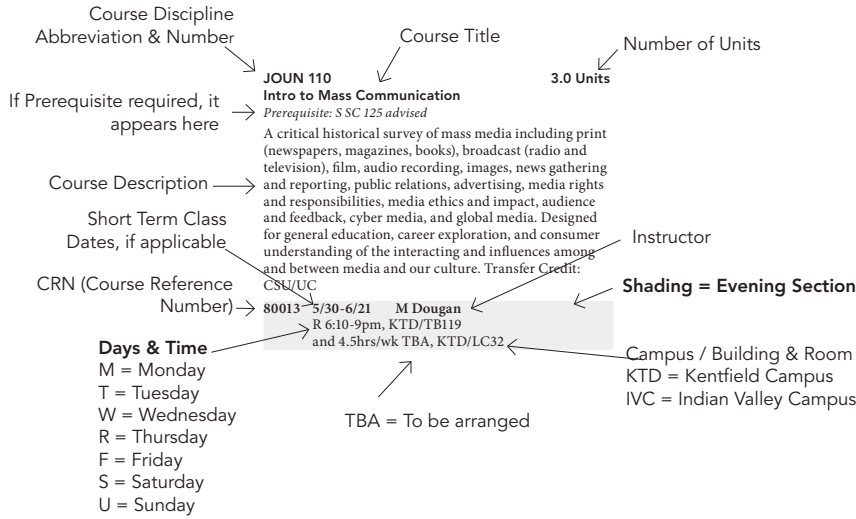
ART 131 **4.0 Units**
Drawing and Composition II
Prerequisite: Art 130.
 Continued development and refinement of drawing skills, formal elements of drawing and composition, using a variety of subject matter. Exploration of graphic methods and materials including black and white media, color, and collage. Both traditional and experimental means of expression will be examined. Transfer Credit: CSU/UC (Material Fee: \$15)
 60524 C Lefkowitz
 Lec MTWR 9:00am-12:00pm, KTD/FA214
 Lab MTWR 12:10pm-1:25pm, KTD/FA214

ART 170 **4.0 Units**
Ceramics I
 Introductory course involving the student in technical, functional, and aesthetic aspects of clay object designing. Basic wheel throwing, hand building, and glazing. Transfer Credit: CSU/UC (Material Fee: \$35)
 60526 R Wood
 Lec MTWR 9:00am-12:00pm, KTD/FA131
 Lab MTWR 12:10pm-1:25pm, KTD/FA131

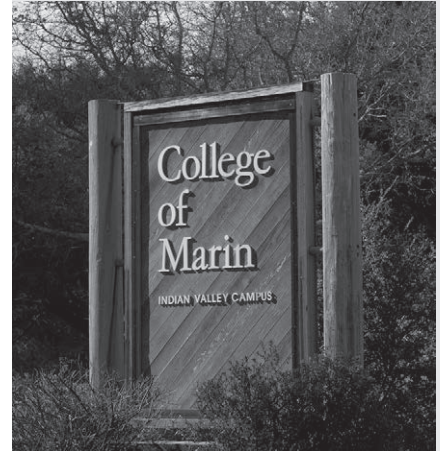
ART 171 **4.0 Units**
Ceramics II
Prerequisite: Art 170. Advisory: Art 112 or concurrent enrollment.
 A second semester beginning ceramics course for those who wish to continue developing the basic techniques of wheel throwing and slab building methods, with an emphasis on increasingly advanced projects. Direct participation in glaze preparation and kiln firing. It is expected that students will produce work reflecting an intermediate understanding of ceramic design and explore individual project resolutions through drawings and group discussion. Transfer Credit: CSU/UC (Material Fee: \$35) (For advanced sections see further listings)
 60527 R Wood
 Lec MTWR 9:00am-12:00pm, KTD/FA131
 Lab MTWR 12:10pm-1:25pm, KTD/FA131

ART 270 **4.0 Units**
Ceramics III
Prerequisite: Art 171.
 Advanced and in-depth interpretation of the common class project, with greater expectations of further technical and conceptual development. Mentoring of beginning students, lab assistance in glaze preparation, kiln loading and firing. Transfer Credit: CSU/UC (Material Fee: \$35)
 60528 R Wood
 Lec MTWR 9:00am-12:00pm, KTD/FA131
 Lab MTWR 12:10pm-1:25pm, KTD/FA131

Course Listings Key



INDIAN VALLEY CAMPUS CLASSES



ART 271 4.0 Units

Ceramics IV

Prerequisite: Art 270.

Advanced and in-depth interpretation of the common class project, with greater expectations of further technical and conceptual development. Mentoring of beginning students, lab assistance in glaze preparation, kiln loading and firing. Transfer Credit: CSU/UC (Material Fee: \$35)

60529 R Wood

Lec MTWR 9:00am-12:00pm, KTD/FA131
Lab MTWR 12:10pm-1:25pm, KTD/FA131

ART 276 4.0 Units

Advanced Wheel Thrown Ceramics

Prerequisite: Art 171.

Advanced study with a focus on the technical and aesthetic considerations of ceramics as a functional medium. Intended for students already well grounded in forming techniques who would benefit from a more critical assessment of their work. May involve field trips to artists' studios, shows, and conferences. Transfer Credit: CSU/UC (Material Fee: \$25)

60530 R Wood

Lec MTWR 9:00am-12:00pm, KTD/FA131
Lab MTWR 12:10pm-1:25pm, KTD/FA131

AUTOMOTIVE COLLISION REPAIR TECHNOLOGY

Learn Automotive Painting



ACRT 160A 1.5 Units

Automotive Painting and Refinishing Repair Workshop

In this workshop, students will apply all levels of acquired skills in automotive painting and refinishing repair in an intensive lab experience. Transfer Credit: CSU

60114 R Palmer

Lec MTW 9:00am-9:35am, IVC/BLDG06/108
Lab MTW 9:45am-12:15pm, IVC/BLDG01/103

60115 R Palmer

Lec MTW 1:00pm-1:35pm, IVC/BLDG06/108
Lab MTW 1:45pm-4:15pm, IVC/BLDG01/103

In the midst of unprecedented growth and facility construction at the College of Marin Indian Valley Campus (IVC), a philosophy of sustainability weaves through the curriculum of workforce development classes.

Students in traditional trade courses such as Auto Technology and Auto Collision Repair Technology have been working with students in Electronics classes to design and build alternatively-powered vehicles. At the same time, the Solar Technology program is active with students learning the latest best practices for the industry, while Environmental Landscaping students are learning about sustainable soil and water management practices. A two-acre organic farm offers students the opportunity to learn and grow at the on-site Center for Sustainable Horticulture.

Indian Valley Campus offers a variety of classes that will transfer to four-year universities. You can save thousands of dollars on the cost of your baccalaureate degree by attending College of Marin for the first two years of your college education.

For a complete listing of Summer 2012 IVC classes go to www.marin.edu/ivc.

Learn to Repair Small Dents



ACRT 160B 1.5 Units Automotive Dent and Damage Repair Workshop

In this workshop, students will apply all levels of acquired skills in automotive dent and damage repair in an intensive lab experience. Transfer Credit: CSU

60116 R Palmer
Lec MTW 9:00am-9:35am, IVC/
BLDG06/108
Lab MTW 9:45am-12:15pm, IVC/
BLDG01/103

60117 R Palmer
Lec MTW 1:00pm-1:35pm, IVC/
BLDG06/108
Lab MTW 1:45pm-4:15pm, IVC/
BLDG01/103

ACRT 160C 1.5 Units Automotive Structural Repair Workshop

In this workshop, students will apply all levels of acquired skills in automotive structural repair in an intensive lab experience. Transfer Credit: CSU

60118 R Palmer
Lec MTW 9:00am-9:35am, IVC/
BLDG06/108
Lab MTW 9:45am-12:15pm, IVC/
BLDG01/103

60119 R Palmer
Lec MTW 1:00pm-1:35pm, IVC/
BLDG06/108
Lab MTW 1:45pm-4:15pm, IVC/
BLDG01/103

ACRT 160D 1.5 Units Automotive Mechanical and Electrical Repair Workshop

In this workshop, students will apply all levels of acquired skills in automotive mechanical and electrical repair in an intensive lab experience. Transfer Credit: CSU

60120 R Palmer
Lec MTW 9:00am-9:35am, IVC/
BLDG06/108
Lab MTW 9:45am-12:15pm, IVC/
BLDG01/103

60121 R Palmer
Lec MTW 1:00pm-1:35pm, IVC/
BLDG06/108
Lab MTW 1:45pm-4:15pm, IVC/
BLDG01/103

ACRT 160E 1.5 Units Automotive Plastic Repair Workshop

In this workshop, students will apply all levels of acquired skills in automotive plastic repair in an intensive lab experience. Transfer Credit: CSU

60122 R Palmer
Lec MTW 9:00am-9:35am, IVC/
BLDG06/108
Lab MTW 9:45am-12:15pm, IVC/
BLDG01/103

60123 R Palmer
Lec MTW 1:00pm-1:35pm, IVC/
BLDG06/108
Lab MTW 1:45pm-4:15pm, IVC/
BLDG01/103

AUTOMOTIVE TECHNOLOGY

Learn How to Do Basic Maintenance on Your Car



AUTO 110 3.0 Units Introduction to Automotive Maintenance

This course will study safety and basic lab procedures used by entry-level technicians and those interested in developing do-it-yourself skills. Transfer Credit: CSU

60135 D Del Grande
Lec TR 6:40pm-9:15pm, IVC/
BLDG03/255
Lab S 8:10am-6:00pm, IVC/BLDG02/210

AUTO 111 3.0 Units Automotive Maintenance - Intermediate

This course provides training in intermediate repair and service procedures used by entry-level technicians and those interested in developing do-it-yourself skills. Transfer Credit: CSU

60136 R Palmer
Lec MW 6:10pm-9:00pm, IVC/
BLDG06/108
Lab S 8:10am-6:00pm, IVC/BLDG02/210

BIOLOGY

BIOL 110 3.0 Units

Introduction to Biology

Advisory: concurrent enrollment in BIOL 110L.

An introduction to the science of biology for nonmajors as well as a prerequisite course for majors courses in biology. Subjects include ecology, human ecology, evolution, molecular, cell biology, genetics, life kingdoms review, and human physiology. Transfer Credit: CSU/UC

60059 F Agudelo-Silva
Lec TWR 12:40pm-3:30pm, KTD/SC101

!60424 06/05-07/28 J Williams
Lec T 6:10pm-9:00pm, IVC/BLDG16/212
Lec S 9:10am-12:00pm, IVC/BLDG16/212
EARLY START CLASS: Begins Tuesday, June 5, and ends Saturday, July 28, 2012.

BIOL 110L 1.0 Unit

Introduction to Biology Laboratory

Advisory: BIOL 110 or concurrent enrollment.

An introduction to biology experimentation for nonmajors. Experiments and field studies are selected from ecology, molecular, cell biology, genetics, plant anatomy and identification, and human physiology topics. Transfer Credit: CSU/UC

60060 S Boyce
Lab TWR 9:40am-12:30pm, KTD/SC184

!60061 F Agudelo-Silva
Lab TWR 4:10pm-7:00pm, KTD/SC184

!60427 06/07-07/28 J Williams
Lab R 6:10pm-9:00pm, IVC/BLDG06/214
Lab S 12:30pm-3:30pm, IVC/
BLDG06/214
EARLY START CLASS: Begins Thursday, June 7, and ends Saturday, July 28, 2012.

BIOL 247B 3.0 Units

Extended Field Studies: Alaska

A two-week field investigation/study of the Kenai Peninsula, interior and far north of Alaska. This area is biologically significant for its great abundance and diversity of mammal and bird life. We will explore various ecosystems, from coastal forests to arctic tundra. Participants should be in good physical condition and be able to withstand rigorous, unpleasant conditions. Travel is by van, with the outdoors providing our overnight accommodations. A nonobligatory donation of \$250 will be requested to be paid at the pre-trip meeting. The cost of road transportation for this trip is \$250 per student, plus air and food. Please notify instructor Joe Mueller at 415.485.9537 or e-mail joe.mueller@marin.edu as soon as possible before enrolling. Transfer Credit: CSU

60531 05/25-06/15 J Mueller
Pre-trip class meetings: Friday, May 25 and Tuesday, May 29, 7:00pm-10:00pm, KTD/SC190
Field trip dates: Friday, June 1 to Friday, June 15, 2012.

CHEMISTRY

CHEM 110 5.0 Units

Chemistry for Allied Health Sciences

Prerequisite: Math 101 or 101AB or 101XY or eligibility for Math 103 based on the Math Assessment test.

This introductory one-semester survey of the fundamental concepts and laboratory techniques of general, organic, and biochemistry will emphasize applications within the Health Sciences. The course is designed to meet the admission requirements for the A.S. program in Registered Nursing and other Allied Health Sciences. It also fulfills the general elective requirement in natural sciences. Transfer Credit: CSU

60067 06/11-08/03 N Subramanian

Lec MTW 10:30am-12:30pm, KTD/SC125

Lec R 10:30am-12:30pm, KTD/SC125

Lab TR 7:30am-10:20am, KTD/SC158

CHEM 114 5.0 Units

Introduction to Chemistry

Prerequisite: Math 101 or 101AB or 101XY or eligibility for Math 103 based on the Math Assessment Test.

One semester of basic principles of inorganic chemistry designed to prepare the student for CHEM 115 or CHEM 131. CHEM 114/115 represent one year of chemistry for health occupations. Transfer Credit: CSU/UC

60068 K Opong Mensah

Lec MTW 7:55am-10:30am, KTD/SC130

Lec R 7:55am-10:30am, KTD/SC130

Lab TWR 10:40am-1:30pm, KTD/SC158

CHEM 132 5.0 Units

General Chemistry II

Prerequisite: Chemistry 131.

Second semester of the one-year college chemistry course for science and engineering majors. Transfer Credit: CSU/UC

60069 S Serafin

Lec MTW 7:55am-10:30am, KTD/SC101

Lec R 7:55am-10:30am, KTD/SC101

Lab TWR 10:40am-1:30pm, KTD/SC155

CHEM 132E 3.0 Units

General Chemistry II, Lecture Only

Prerequisite: Chemistry 131.

Lecture material of the second semester of the one-year college chemistry course for some engineering majors. Transfer Credit: CSU/UC

60070 S Serafin

Lec MTWR 7:55am-10:30am, KTD/SC101

COMMUNICATIONS

COMM 160 3.0 Units

Images of Race, Gender, and Class in the Media

In this course we will explore how gender, race, class, sexual orientation, ethnicity, and other social positions affect media coverage, portrayals, production and reception. The course focuses on historical roots of stereotyping, theories, methods of analysis, media representations of various groups, and topics of current interest. Students conduct research projects in their chosen area of interest and develop expertise in media literacy and criticism with respect to issues of multiculturalism and gender. May be taken for credit as COMM 160 or JOUN 160. Students receive credit for only one course. Transfer Credit: CSU/UC

60479 F Crosby

Lec MTW 10:10am-1:00pm, KTD/OH096

COMPUTER INFORMATION SYSTEMS

Learn to Use Personal Computers



CIS 101 1.5 Units

Introduction to Personal Computers and Operating Systems

Introduction to the hardware, operating systems, and application software environment of the personal computer for students with little or no previous experience with microcomputers. Uses Windows 7. Transfer Credit: CSU (Material Fee: \$2)

60486 M Ransom

Lec TR 9:00am-10:20am, KTD/LC038

Arr 4 hrs/wk, KTD/LC035

60513 Y Ortiz

Lec T 6:00pm-8:40pm, KTD/LC038

Arr 4 hrs/wk, KTD/LC035

CIS 110

3.0 Units

Introduction to Computer Information Systems

A general introduction to computers and information processing for all students, this transfer level course will allow students to work with personal computers using application software for word processing, spreadsheets, and databases. Transfer Credit: CSU/UC

60010 M Ransom

Internet Course, 11hrs/wk TBA, KTD/IVC. For log on instructions, please see the Distance Education listings online at <http://www.marin.edu/DE/online-courses.html>

COURT REPORTING

In order for a person to qualify from a school to take the state licensing examination, the person shall complete a program at a recognized school. For information concerning the minimum requirements that a court reporting program must meet in order to be recognized, contact: The Court Reporters Board of California; 2535 Capitol Oaks Dr., Suite 230, Sacramento, CA 95833; (916) 263-3660.

The College of Marin Court Reporting Program is recognized by the Court Reporters Board of California.

A MINIMUM OF FOUR UNITS OF MACHINE SHORTHAND IS A REQUIRED COREQUISITE FOR ALL OF THE SKILL-BASED COURT REPORTING CLASSES OFFERED THIS SUMMER.

COUR 115F 2.0 Units

Beginning Machine Shorthand Four-Voice: Level II-F

Prerequisite: Court Reporting 112. Total of eight units of machine shorthand required.

Goal: 100 wpm on four-minute unfamiliar 4-Voice tests with at least 90% accuracy; develop stenotype machine dexterity, and the ability to read stenotype notes fluently. Transfer Credit: CSU (Material Fee: \$1)

60355 K Acredolo, C Barr-Vickers

Lec 3 hrs/wk, IVC/BLDG27/228

Lab 6 hrs/wk, IVC/BLDG27/228

DENTAL ASSISTING; REGISTERED**COUR 115J 2.0 Units
Beginning Machine Shorthand Jury Charge: Level II-J**

Prerequisite: Court Reporting 112. Total of eight units of machine shorthand required.

Goal: 100 wam on four-minute Jury Charge tests with at least 90% accuracy; develop stenotype machine dexterity, and the ability to read stenotype notes fluently. Transfer Credit: CSU (Material Fee: \$1)

60356 K Acredolo, C Barr-Vickers
Lec 3 hrs/wk, IVC/BLDG27/228
Lab 6 hrs/wk, IVC/BLDG27/228

**COUR 115S 2.0 Units
Beginning Machine Shorthand Literary: Level II-S**

Prerequisite: Court Reporting 112. Total of eight units of machine shorthand required.

Goal: 100 wam on four-minute unfamiliar Literary tests with at least 92.5% accuracy; develop stenotype machine dexterity, and the ability to read stenotype notes fluently. Transfer Credit: CSU (Material Fee: \$1)

60357 K Acredolo, C Barr-Vickers
Lec 3 hrs/wk, IVC/BLDG27/228
Lab 6 hrs/wk, IVC/BLDG27/228

**COUR 125F 2.0 Units
Intermediate Machine Shorthand Four-Voice: Level III-F**

Prerequisite: Court Reporting 115F. Total of eight units of machine shorthand required.

Goal: 125 wam on five-minute unfamiliar 4-Voice tests with at least 97.5% accuracy; develop stenotype machine dexterity, and the ability to read stenotype notes fluently. Transfer Credit: CSU (Material Fee: \$1)

60364 K Acredolo, C Barr-Vickers
Lec 3 hrs/wk, IVC/TBA
Lab 6 hrs/wk, IVC/TBA

**COUR 125J 2.0 Units
Intermediate Machine Shorthand Jury Charge: Level III-J**

Prerequisite: Court Reporting 115J. Total of eight units of machine shorthand required.

Goal: 125 wam on five-minute Jury Charge tests with at least 95% accuracy; develop stenotype machine dexterity, and the ability to read stenotype notes fluently. Transfer Credit: CSU (Material Fee: \$1)

60365 K Acredolo, C Barr-Vickers
Lec 3 hrs/wk, IVC/BLDG27/228
Lab 6 hrs/wk, IVC/BLDG27/228

**COUR 125S 2.0 Units
Intermediate Machine Shorthand Literary: Level III-S**

Prerequisite: Court Reporting 115S. Total of eight units of machine shorthand required.

Goal: 125 wam on five-minute unfamiliar Literary tests with at least 95% accuracy; develop stenotype machine dexterity, and the ability to read stenotype notes fluently. Transfer Credit: CSU (Material Fee: \$1)

60369 K Acredolo, C Barr-Vickers
Lec 3 hrs/wk, IVC/BLDG27/228
Lab 6 hrs/wk, IVC/BLDG27/228

**COUR 150F 2.0 Units
Intermediate Machine Shorthand Four-Voice: Level IV-F**

Prerequisite: Court Reporting 125F. Total of eight units of machine shorthand required.

Goal: 150 wam on seven and one-half-minute unfamiliar 4-Voice tests with at least 97.5% accuracy; develop stenotype machine dexterity, and the ability to read stenotype notes fluently. Transfer Credit: CSU (Material Fee: \$1)

60380 C Barr-Vickers, L Jimenez-Aguirre
Lec 3 hrs/wk, IVC/BLDG27/233
Lab 6 hrs/wk, IVC/BLDG27/233

**COUR 150J 2.0 Units
Intermediate Machine Shorthand Jury Charge: Level IV-J**

Prerequisite: Court Reporting 125J. Total of eight units of machine shorthand required.

Goal: 150 wam on five-minute Jury Charge tests with at least 95% accuracy; develop stenotype machine dexterity, and the ability to read stenotype notes fluently. Transfer Credit: CSU (Material Fee: \$1)

60383 C Barr-Vickers, L Jimenez-Aguirre
Lec 3 hrs/wk, IVC/BLDG27/233
Lab 6 hrs/wk, IVC/BLDG27/233

**COUR 150S 2.0 Units
Intermediate Machine Shorthand Literary: Level IV-S**

Prerequisite: Court Reporting 125S. Total of eight units of machine shorthand required.

Goal: 150 wam on five-minute unfamiliar Literary tests with at least 95% accuracy; develop stenotype machine dexterity, and the ability to read stenotype notes fluently. Transfer Credit: CSU (Material Fee: \$1)

60384 C Barr-Vickers, L Jimenez-Aguirre
Lec 3 hrs/wk, IVC/BLDG27/233
Lab 6 hrs/wk, IVC/BLDG27/233

**COUR 175F 2.0 Units
Intermediate Machine Shorthand Four-Voice: Level V-F**

Prerequisite: Court Reporting 150F. Total of eight units of machine shorthand required.

Goal: 175 wam on ten-minute unfamiliar 4-Voice tests with at least 97.5% accuracy; develop stenotype machine dexterity, and the ability to read stenotype notes fluently. Transfer Credit: CSU (Material Fee: \$1)

60390 C Barr-Vickers, L Jimenez-Aguirre
Lec 3 hrs/wk, IVC/BLDG27/233
Lab 6 hrs/wk, IVC/BLDG27/233

**COUR 175J 2.0 Units
Intermediate Machine Shorthand Jury Charge: Level V-J**

Prerequisite: Court Reporting 150J. Total of eight units of machine shorthand required.

Goal: 175 wam on five-minute Jury Charge tests with at least 95% accuracy; develop stenotype machine dexterity, and the ability to read stenotype notes fluently. Transfer Credit: CSU (Material Fee: \$1)

60391 C Barr-Vickers, L Jimenez-Aguirre
Lec 3 hrs/wk, IVC/BLDG27/233
Lab 6 hrs/wk, IVC/BLDG27/233

**COUR 175S 2.0 Units
Intermediate Machine Shorthand Literary: Level V-S**

Prerequisite: Court Reporting 150S. Total of eight units of machine shorthand required.

Goal: 175 wam on five-minute unfamiliar Literary tests with at least 95% accuracy; develop stenotype machine dexterity, and the ability to read stenotype notes fluently. Transfer Credit: CSU (Material Fee: \$1)

60392 C Barr-Vickers, L Jimenez-Aguirre
Lec 3 hrs/wk, IVC/BLDG27/233
Lab 6 hrs/wk, IVC/BLDG27/233

**DENTAL ASSISTING;
REGISTERED****DENT 192 2.0 Units
Clinical Applications in Dental Offices**

Prerequisite: Dental Assisting 183 and 186. Corequisite: Dental Assisting 192A. Advisory: English 98 or 98SL.

Students actively participate at dental offices or dental clinics to practice their dental assisting chairside skills under the supervision of the dental office employees. Transfer Credit: CSU

60030 05/29-06/21 K Rooney
Arr MTR 8:00am-5:00pm, IVC/HOSP/
TBA
Lab F 9:00am-4:00pm, IVC/BLDG27/228
4 hours seminar TBA. On campus
labs 6/01 and 6/08, 9am-4pm, Bldg 27,
Room 224.

DENT 192A 0.5 Unit**Pit and Fissure Sealants**

Prerequisite: Dental Assisting 176. *Corequisite:* Dental Assisting 192 and 192AL. *Advisory:* English 98 or 98SL.

This course is designed to give students knowledge in the application of pit and fissure sealants on patients. This course partially satisfies to State Dental Board to earn a Certificate in Pit and Fissure Sealants.

Transfer Credit: CSU

60031 05/30-06/20 G Hom

Lec W 8:10am-10:00am, IVC/

BLDG27/224

Class meets 5/30, 6/06, 6/13, and 6/20.

DENT 192AL 0.5 Unit**Pit and Fissure Sealants Lab**

Prerequisite: Dental Assisting 183 and current CPR Certificate. *Corequisite:* Dental Assisting 192 and 192A. *Advisory:* English 98 or 98SL.

This is an educational and participatory course in the application of pit and fissure sealants on patients. This lab course satisfies the laboratory and clinical requirements for earning the Certificate in Pit and Fissure Sealants under the State Board of Dental Examiners. Transfer Credit: CSU (Material Fee: \$100)

60032 05/30-06/20 G Hom, M Wilgis, K Rooney

Lab W 10:10am-4:00pm, IVC/

BLDG27/220

Class meets 5/30, 6/06, 6/13 and 6/20.

EARLY CHILDHOOD EDUCATION**ECE 135** 2.0 Units**Working With Children's Challenging Behavior**

In this course, students will learn strategies and methods for working with young children's challenging behavior in early childhood classroom settings. Methods for working with parents whose child might display challenging behavior and for locating outside help are also included. Transfer Credit: CSU

60498 S Johnson

Lec MW 6:40pm-9:30pm, KTD/HC165

ECE 220A 3.0 Units**Early Childhood Education Administration A**

An overview of preschool programs; methods for staffing and budgeting and for setting up preschool environments. Licensing requirements, the role of an administrator, and planning for children are also covered. Course can be applied both toward licensing requirements in ECE administration and the administration course requirement for the Children's Center Supervisor permit. Transfer Credit: CSU

60497 S Johnson

Lec TR 6:10pm-10:00pm, KTD/HC165

ECONOMICS**The Big Picture: Understanding the Economy****ECON 101** 3.0 Units**Principles of Macroeconomics**

Advisory: Eligibility for ENGL 120 and eligibility for MATH 103.

An introduction to macroeconomic analysis. A study of the determinants of GDP, employment, income, savings, and investment. ECON 102 may be taken before ECON 101. Transfer Credit: CSU/UC

60022 N Pacula

Lec TWR 9:10am-12:00pm, KTD/BC105

ENGLISH

ESL classes are listed under English as a Second Language.

The College of Marin offers an English assessment testing service to provide prospective students with information to make informed decisions when enrolling in English courses. Students are provided with their own individual test scores. Students who need help interpreting their individual placement test scores and/or in deciding whether to register for or remain enrolled in an English course may seek assistance from a counselor.

For information about the English Assessment Test, please call the Testing Office at 415.485.9469 (located in the Student Services Center, Room 238, Kentfield Campus) for test information on both campuses.

The following English skills courses (ENGL 70-79) are offered as individualized, self-paced instruction in the English Skills Lab (HC128/KTD).

ENGL 070 1.0 Unit**Phonics**

60504 M Timmel

Lab 9 hrs/wk, KTD/HC128

ENGL 071 1.0 Unit**Spelling I**

60505 M Timmel

Lab 9 hrs/wk, KTD/HC128

ENGL 072 1.0 Unit**Spelling II**

60506 M Timmel

Lab 9 hrs/wk, KTD/HC128

ENGL 073 1.0 Unit**Vocabulary I**

60507 M Timmel

Lab 9 hrs/wk, KTD/HC128

ENGL 074 1.0 Unit**Vocabulary II**

60508 M Timmel

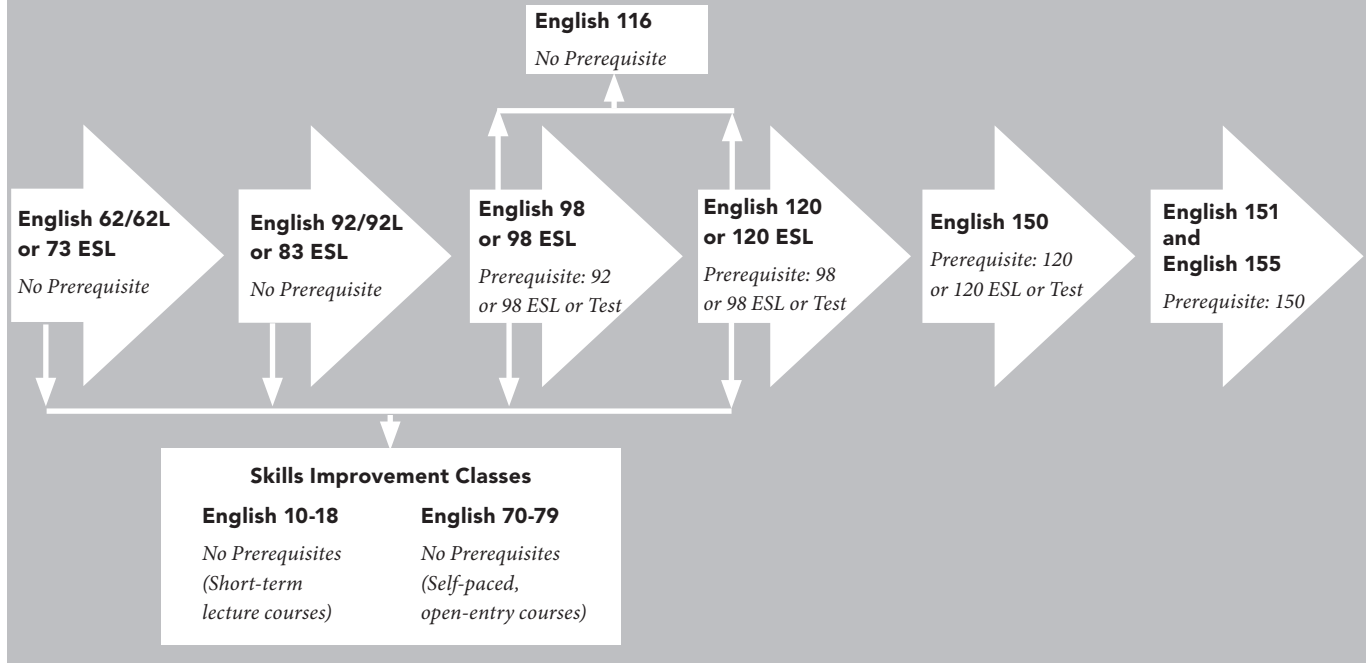
Lab 9 hrs/wk, KTD/HC128

ENGL 075 1.0 Unit**Reading I**

60509 M Timmel

Lab 9 hrs/wk, KTD/HC128

ENGLISH FLOW CHART



ENGL 076 1.0 Unit
Reading II
 60510 M Timmel
 Lab 9 hrs/wk, KTD/HC128

ENGL 077 1.0 Unit
Independent Reading
 60511 M Timmel
 Lab 9 hrs/wk, KTD/HC128

ENGL 078 1.0 Unit
Special Interest Workshop
 60381 M Timmel
 Lab 9 hrs/wk, KTD/HC128

ENGL 079 1.0 Unit
Grammar Review
 60512 M Timmel
 Lab 9 hrs/wk, KTD/HC128

ENGL 098 3.0 Units
Introduction to College Reading and Composition I
Prerequisite: English 92 or ESL 83 or English Placement Test or equivalent.
 Students will practice reading, writing, and critical thinking to improve reading comprehension and to develop composing techniques for effective academic writing. Course is designed to prepare students for college level academic reading and writing and requires one hour weekly of guided practice in the Writing Center.
 60298 A Pasquel
 Lec MTR 9:00am-12:00pm, KTD/HC129

ENGLISH SKILLS LAB – KENTFIELD CAMPUS

These courses (ENGL 70-79) are designed to help students develop the reading and writing skills necessary for success and confidence in their college experience. Classes taught in the lab are individualized and self-paced. Diagnostic tests are available to guide students in their choice of course. Classes may be started and ended any time during the semester, or started one semester and completed the next. Each class requires approximately 48 hours per semester. Students work at their own pace during any supervised time listed on the time chart. Students should plan to spend nine hours weekly during the hours listed to complete a unit in the summer.

Note: Students should see an English Skills Lab teacher before buying books. For English 77 and English 78, students must have a signed contract with a lab teacher before enrolling.

ENGLISH SKILLS LAB TIME CHART – KENTFIELD CAMPUS, HC 128 For Self-paced Minicourses (ENGL 70-79) Summer 2012				
TIME	MON	TUES	WED	THUR
9:00am-1:30pm	Timmel	Timmel	Timmel	Timmel
1:30pm-2:00pm	Timmel	CLOSED	Timmel	CLOSED

Students enrolled in English 98 or English 120 will be required to attend three hours of writing lab per week at their convenience during ANY of the times listed in the chart.

ENGL 120 3.0 Units
Introduction to College Reading and Composition II
Prerequisite: English 98 or 98SL or English Placement Test or equivalent.
 Students sharpen their skills in reading, writing, and critical thinking to improve reading comprehension and to develop

composing techniques for effective academic writing. Course is designed to prepare the students for success in college level academic reading and writing, emphasis being placed on thinking clearly and logically and on the construction of cogent arguments. Requires one hour weekly of guided practice in the Writing Center. Transfer Credit: CSU

Note: English classes scheduled in BC 101, the Computer Writing Center, are conducted using computers as a primary mode. Writing, editing, collaborating, researching, and other activities involve computer use on a regular basis. No special skills with computers are required for enrollment.

60129 C Kreit

Lec MTWR 8:00am-10:15am, KTD/BC101

Lab 3 hrs/wk, KTD/HC128

Students enrolled in English 98 or English 120 will be required to attend three hours of writing lab per week at their convenience during ANY of the times listed in the chart.

60300 K Gallagher

Lec MTW 6:00pm-9:00pm, KTD/OH105

Lab 3 hrs/wk, KTD/HC128

Students enrolled in English 98 or English 120 will be required to attend three hours of writing lab per week at their convenience during ANY of the times listed in the chart.

**ENGL 150 3.0 Units
Reading and Composition (1A)**

Prerequisite: English 120 or 120SL or English Placement Test or equivalent.

This course is intended to develop and refine writing, reading, and critical thinking abilities. Various works will be read and discussed. Student writing is principally expository and argumentative. Methods of gathering, evaluating and documenting evidence will be emphasized. Transfer Credit: CSU/UC

Note: English classes scheduled in BC 101, the Computer Writing Center, are conducted using computers as a primary mode. Writing, editing, collaborating, researching, and other activities involve computer use on a regular basis. No special skills with computers are required for enrollment.

60132 A Klinger

Internet Course, 9hrs/wk TBA

For log on instructions, please see the Distance Education listings online at <http://www.marin.edu/DE/online-courses.html>

60133 J Sutherland

Lec MTW 10:30am-1:30pm, KTD/BC101

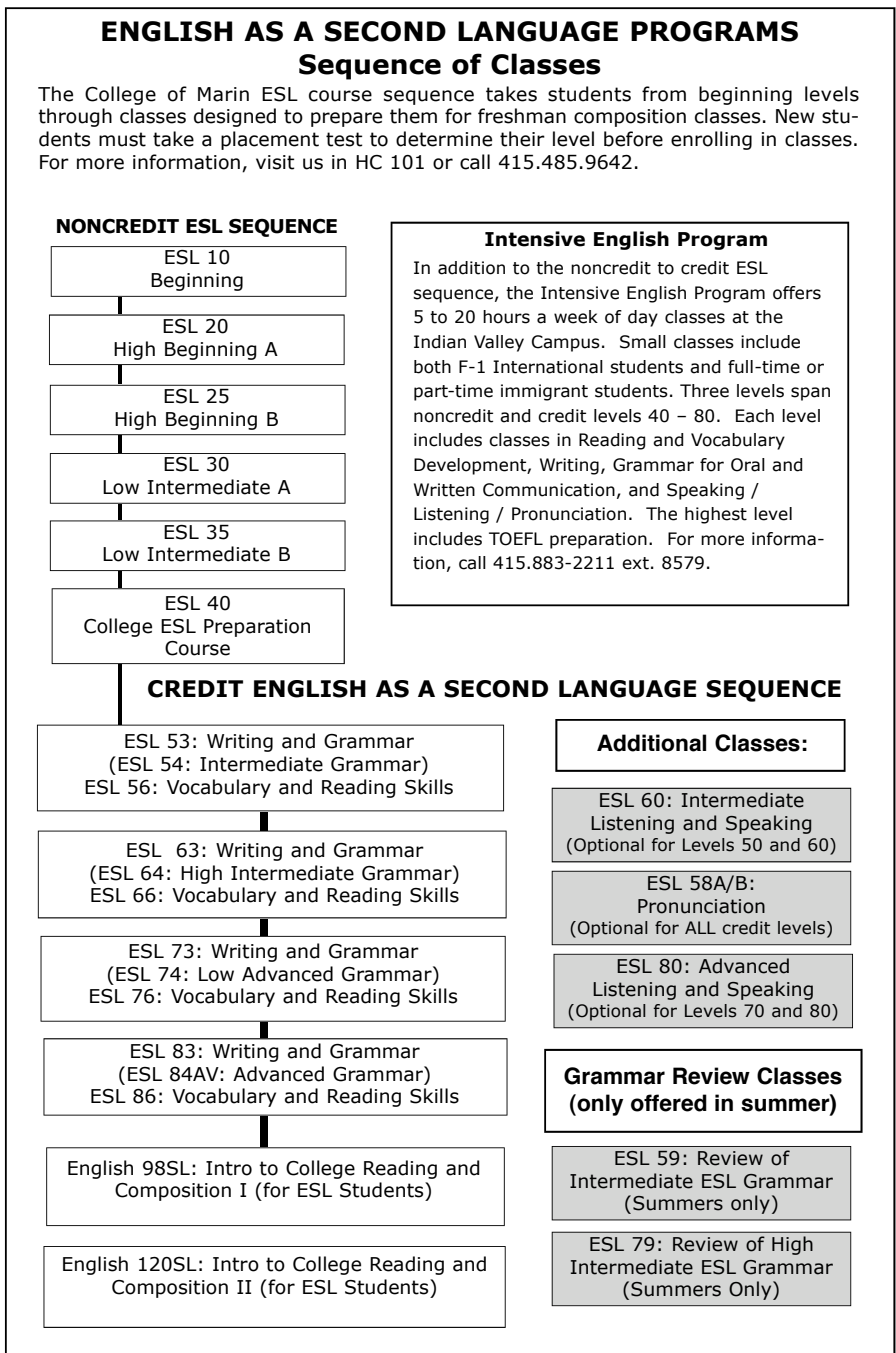
60342 T Saldana

Lec MTWR 1:00pm-3:15pm, KTD/HC170

**ENGL 151 4.0 Units
Reading and Composition (1B)**

Prerequisite: English 150 or equivalent.

This is a course in critical thinking and composition which applies the skills and vocabulary of critical thinking to works of the imagination, as well as to traditional argument and persuasion. Students develop skills in analysis, interpretation and reason-



Please see following page for ESL class listings.

ing, exploring texts that range from straight forward pro and con arguments or subtler, more emotional discourses where views may be implied or even masked. These texts will be viewed from multiple perspectives, such as psychological, historical, or philosophical. Students will write essays of various lengths reflecting their own arguments and analysis and incorporating, through research, the views of others. Transfer Credit: CSU/UC

- 60166 A Klinger
Internet Course, 12hrs/wk TBA
For log on instructions, please see the Distance Education listings online at <http://www.marin.edu/DE/online-courses.html>
- 60267 J Bowsher
Lec MTWR 10:00am-1:00pm, KTD/HC165
- 60343 J Tipton
Lec MTWR 1:40pm-4:40pm, KTD/HC173

ENGLISH AS A SECOND LANGUAGE

THE ENGLISH WRITING CENTER - KTD

Students enrolled in English 98 or English 120 will be required to attend two (2) hours of English Writing Center per week at their convenience during ANY of the times listed in the chart.

Students enrolled in critical thinking courses (English 150, 151) may seek assistance with papers and other tasks in lab.

THE ENGLISH WRITING CENTER - KTD Learning Resources Center, Room 120

DAY	TIME	INSTRUCTOR
MON	9:30am – 11:00am	V Ariano
	11:00am - 12:00pm	C Kreit
	12:00pm - 1:00pm	V Ariano
TUES	9:30am – 11:00am	Staff
	11:00am - 1:00pm	C Kreit
WEDS	9:30am – 11:00am	V Ariano
	11:00am - 12:00pm	C Kreit
	12:00pm - 1:00pm	V Ariano
THURS	9:30am – 11:00am	Staff
	11:00am - 1:00pm	C Kreit

ENGLISH AS A SECOND LANGUAGE

Please see ESL Flow Chart on the preceding page.

The College of Marin offers an English as a Second Language assessment testing service to provide students with information to make informed decisions when enrolling in English as a Second Language courses. The students are provided with their own individual test scores. Students who need help in interpreting their placement test scores and/or in deciding whether to register for, or remain enrolled in, English as a Second Language courses can seek assistance from a counselor or their English as a Second Language instructor.

For information about the English as a Second Language Assessment Test, students can call the Testing Office at 415.485.9469 (located in the Student Services Center, Room 238, Kentfield Campus) for test information on both campuses.

Credit English as a Second Language courses have the same goals as do classes for native English speakers but will provide students with special help regarding the difficulties of learning English.

ESL 060 Intermediate ESL: Listening and Speaking **3.0 Units**

Advisory: ESL Placement Test.

This is an intermediate course in listening and speaking, recommended for students enrolled in 50- or 60-level ESL courses. Practice in speaking and understanding English through the use of audiovisual materials related to classwork. Emphasis on small group communication.

60079 J Cady
Lec TWR 6:00pm-9:00pm, KTD/HC127

ESL 068 American Topics **2.0 Units**

This course will help students understand important American topics, past and present, through lectures, reading and discussion.

60503 J Reisinger
Lec TWR 9:00am-11:00am, KTD/HC172

ETHNIC STUDIES

The Long Road to Equality



ETST 112 History of African Americans (B) **3.0 Units**

A historical and political survey course on the African American experience in the United States from the American Revolution through the 21st century. Transfer Credit: CSU/UC

60023 W Turner
Lec TWR 9:10am-12:00pm, KTD/FH120

FIRE TECHNOLOGY

FIRE 215 Advanced First Aid/First Responder **2.0 Units**

This course will teach the basics of good patient care and the skills needed to deliver appropriate care to the victim of an accident or sudden illness until more highly trained emergency personnel arrive. First Responder and CPR for the Professional Rescuer Certifications will be awarded upon successful completion of the course. This course is a prerequisite for the Emergency Medical Technician Program. Transfer Credit: CSU/UC (Material Fee: \$30)

60515 05/30-07/25 L Jessell, N Scott
Lec MW 6:10pm-7:00pm, IVC/
BLDG27/112
Lab MW 7:10pm-10:00pm, IVC/
BLDG27/112

Fast-Paced & Challenging Career in Health Care



Are you interested in a fast-paced and challenging career in health care?

A career as a First Responder or Emergency Medical Technician may be for you.

Begin your career by completing FIRE 215 Advanced First Aid/First Responder. This course will be held on Monday and Wednesday evenings, 6–10pm beginning May 30, 2012 and ending July 25, 2012. This class will be held at the Indian Valley Campus, Bldg 27, Room 112.

First Responder qualifies you to enroll into the next level of courses, FIRE 112, Emergency Medical Technician I. Two sections are scheduled for the Fall 2012 semester, Sundays 8:30am to 5pm or Monday/Wednesday evenings 6-10pm.

An information meeting regarding the program will be held Saturday, August 11, 2012, 10am to 12 noon at the Indian Valley Campus, Bldg 27, Room 112.

GEOLOGY

GEOL 127B 3.0 Units

Extended Field Studies

Prerequisite: GEOL 120.

A two-week field investigation of the spectacular and unique geology found within the Basin and Range and far western Colorado Plateau provinces. The journey consists of an eastbound transect over the central Basin and Range to the infamous Wasatch Front. Southern Great Basin geology will be studied on the return leg of the trip. Students camp each night, bathe in hot springs and learn how a field geologist lives. Upon completion, students will have a firm understanding of the dynamic tectonic conditions that have formed and deformed the stratigraphy of the western United States, as well as memories and friends they will cherish for a lifetime. Specifics on this incredible learning opportunity are provided in the first meeting. Transfer Credit: CSU

60532 04/27-06/12 N Myers

Pre-trip meetings: 2 Fridays, April 27 and May 4, 6:10pm-9:00pm, KTD/SC 159
Field trip dates: Wed. May 30-Tues. June 12, 2012.

HEALTH EDUCATION

HED 130 3.0 Units

Contemporary Health Issues

This course will provide the individual with the latest research, recommendations, and information on the prevention of illness and the achievement of holistic health for body, mind and spirit. Transfer Credit: CSU/UC

60016 K Smyth

Internet Course, 9 hrs/wk TBA
For log on instructions, please see the Distance Education listings online at <http://www.marin.edu/DE/online-courses.html>

HISTORY

HIST 100 3.0 Units

Major Trends and Selected Topics in American History

History of the United States from its Native American and colonial background to the present. Social, economic, and political institutions and developments are examined. History 117 and 118 are recommended or required for majors and minors in history, teaching, social science, prelegal, and certain other areas. Transfer Credit: CSU/UC

60024 H Fearnley

Video Course, 9 hrs/wk TBA
For instructions, please see the Distance Education listings online at <http://www.marin.edu/DE/video-courses.html>
Orientation meeting date and time: 6/18/12, 6:00pm, KTD/OH96

ITALIAN

ITAL 101 5.0 Units

Elementary Italian I

Speaking, understanding, reading, and writing Italian. An introduction to Italian culture and realities. Labs and audiovisual materials. Transfer Credit: CSU/UC

60112 R Pagani

Lec MTWR 9:10am-12:00pm, KTD/OH106
Lab 9 hrs/wk, KTD/LC150

JOURNALISM

JOUN 160 3.0 Units

Images of Race, Gender, and Class in the Media

In this course, we will explore how gender, race, class, sexual orientation, ethnicity, and other social positions affect media coverage, portrayals, production and reception. The course focuses on historical roots of stereotyping, theories, methods of analysis, media representations of various groups, and topics of current interest. Students conduct research projects in their chosen area of interest and develop expertise in media literacy and criticism with respect to issues of multiculturalism and gender. Transfer Credit: CSU/UC

60480 F Crosby

Lec MTW 10:10am-1:00pm, KTD/OH096

MATHEMATICS

All mathematics courses may be taken for a letter grade or pass/no pass.

NOTICE TO MATHEMATICS STUDENTS

Students who enroll in mathematics courses may be asked to provide evidence that prerequisites are satisfied in order to maximize their chances for success. The prerequisite course must have been passed with a grade of "C," "P" (Pass), or higher. Students who have received a "NP" (No Pass), "D," or "F" in a prerequisite course at COM must subsequently complete that course with a grade of "C," "P" (Pass), or higher prior to enrolling in the course for which it is a prerequisite.

The COM counselors can provide valuable help in choosing the appropriate mathematics course. For testing appointments, call 415.485.9469. For counseling appointments call 415.485.9432.

Note: Some precalculus level mathematics courses are offered in two modes of instruction — traditional lecture, and self-paced in the Math Lab. Except for the mode of instruction, such courses are equivalent. Traditional lecture courses have days and times listed.

MATH 101 3.0 Units

Elementary Algebra

Prerequisite: Math 95 or 95B or 95Y or sufficient score on Math Assessment Test.

Elementary algebra through quadratic equations.

60086 L Ordin

Lec MTWR 8:00am-11:45am, KTD/SC102

MATH 103 5.0 Units

Intermediate Algebra

Prerequisite: Math 101 or 101AB or 101XY or satisfactory score on Math Assessment Test.

This course is an extension of many of the concepts introduced in elementary algebra. New topics include algebraic, logarithmic and exponential functions and their graphs, linear systems and applications.

60090 M Allen

Lec MTWR 8:00am-11:45am, KTD/SC133

MATH 109 5.0 Units

Pre-Calculus College Algebra and Trigonometry

Prerequisite: 103 or 103AB or 103XY or satisfactory score on Math Assessment Test.

An intensive course covering the topics from precalculus algebra and trigonometry necessary for the Calculus 123, 124, 223, 224 sequence. Calculator with trig function keys required. Transfer Credit: CSU/UC.

60096 I Roderick

Lec MTWR 10:30am-2:15pm, KTD/SC124

MATH 115 4.0 Units

Probability and Statistics

Prerequisite: Math 103 or 103AB or 103XY or satisfactory score on Math Assessment Test. Credit will be awarded for either Math 115 or Statistics 115, but not both courses.

Descriptive statistics, probability distributions, data sampling, estimation, and hypothesis testing. Statistics calculator required. Transfer Credit: CSU/UC

60414 M Freedman

Lec MTWR 8:00am-11:00am, KTD/SC104

MATH 121 3.0 Units

Calculus I with Applications

Prerequisite: Math 103 or 103AB or 103XY or satisfactory score on Pre-Calculus Assessment Test.

Graphing functions; limits, derivatives, integrals of functions; exponential, logarithmic functions; applications. Transfer Credit: CSU/UC

60099 J Armendariz

Lec MTWR 8:10am-10:20am, KTD/SC125

THE INDIVIDUALIZED MATHEMATICS PROGRAM

KENTFIELD CAMPUS

These courses are individualized and self-paced. Repeat testing is used. Attendance is very important. Failure to meet required hours will affect a student's grade. Instructors and tutors are available to help students. All of the courses are open-entry and open-exit classes. All classes are in the Math Lab in the Austin Science Center Building, Room SC 115.

STUDENTS WHO PRE-REGISTER FOR A COURSE IN THIS PROGRAM MUST CHECK IN WITH AN INSTRUCTOR OR INSTRUCTIONAL ASSISTANT DURING THE FIRST WEEK OF THE SEMESTER TO AVOID BEING DROPPED.

SELF-PACED COURSES:

The MATH 95XY sequence is equivalent to MATH 95; the MATH 101XY sequence is equivalent to MATH 101; and the MATH 103XY sequence is equivalent to MATH 103.

Each unit of the MATH 95XY sequence requires an average of twelve hours weekly in the Math Lab until the course is completed. Each unit of the MATH 101XY and 103XY sequences require an average of sixteen hours weekly in the Math Lab until the course is completed.

Class hours required may be selected from any combination of the supervised times listed on the time chart.

MATH 095X 1.0 Unit

Basic Math Skills

Prerequisite: Math 85.

60465 L Ordin

Self-paced, 12hrs/wk TBA, KTD/SC 115

MATH 095Y 1.0 Unit

Intermediate Math Skills

Prerequisite: Math 95A or Math 95X.

60467 L Ordin

Self-paced, 12hrs/wk TBA, KTD/SC115

MATH 101X 1.5 Units

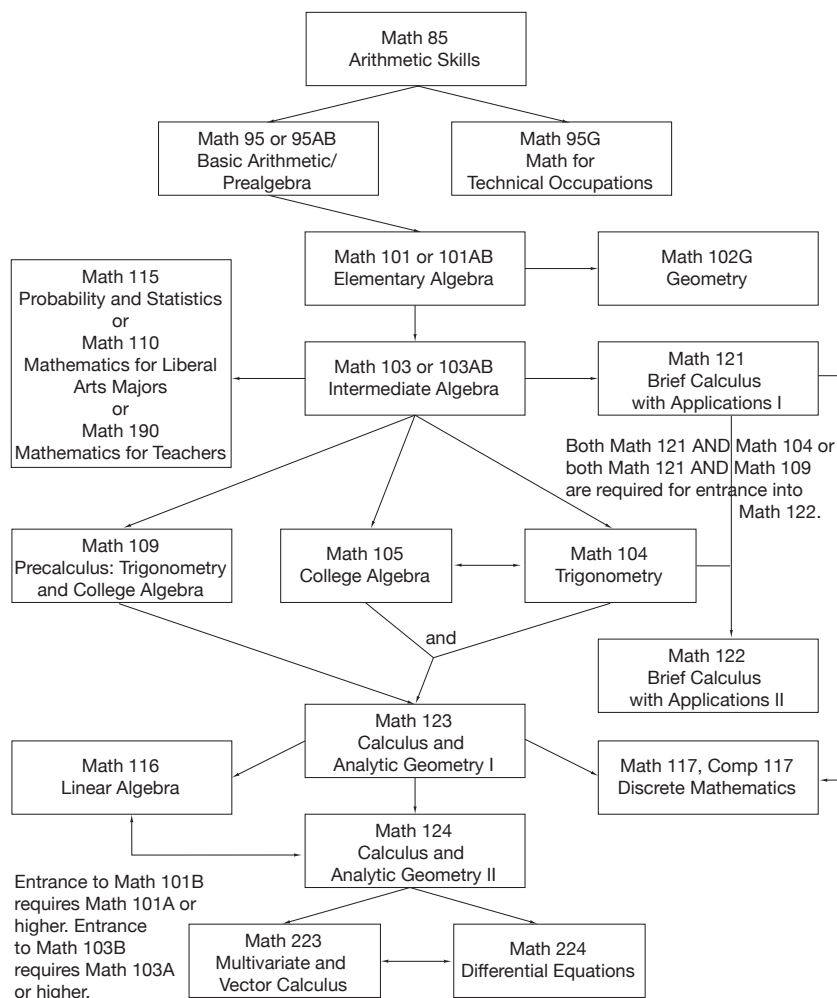
Elementary Algebra

Prerequisite: Math 95 or 95B or 95X or satisfactory score on Math Assessment Test. May be enrolled concurrently with Math 101Y.

60401 L Ordin

Self-paced, 16hrs/wk TBA, KTD/SC115

MATH PROGRAM FLOWCHART



MATH TIME CHART OF SUPERVISED HOURS

Kentfield Campus, Math Lab, Austin Science Center, Room 115

TIME	MON	TUES	WED	THURS
9:00-10:30am	Roderick	Roderick	Roderick	Roderick
10:30-12:00pm	Armendariz	Armendariz	Armendariz	Armendariz
12:00-2:30pm	Ordin	Ordin	Ordin	Ordin
2:30-3:00pm	Roderick	Roderick	Roderick	Roderick

MATH 101Y 1.5 Units
Elementary Algebra

Prerequisite: Math 101A or 101X or concurrent enrollment.

60403 L Ordin
Self-paced, 16hrs/wk TBA, KTD/SC115

MATH 103X 2.5 Units
Intermediate Algebra Part I

Prerequisite: Math 101 or 101AB or 101XY or satisfactory score on Math Assessment Test. May be enrolled concurrently with Math 103Y.

60405 L Ordin
Self-paced, 16hrs/wk TBA, KTD/SC115

MATH 103Y 2.5 Units
Intermediate Algebra Part II

Prerequisite: Math 103A or 103X or concurrent enrollment.

60408 L Ordin
Self-paced, 16hrs/wk TBA, KTD/SC115

MATH 104Y 1.5 Units
Plane Trigonometry

Prerequisite: Math 104X or concurrent enrollment.

60412 L Ordin
Self-paced, 12hrs/wk TBA, KTD/SC115

MEDICAL ASSISTING**MEDA 210L** 2.5 Units
Clinical Externship

Prerequisite: PLEASE SEE CATALOG

This course extends the student's educational preparation from the classroom to the clinic/office for practice. Physical exam, health clearance, immunizations, CPR and First Aid are required. Transfer Credit: CSU (Material Fee: \$20)

60499 07/09-08/02 C Pomajulca
Lab M 9:00am-5:00pm, IVC/
BLDG27/219
Lab MTWR 9:00am-5:00pm, IVC/HOSP/
TBA
First class meeting M, 7/09/12, IVC
campus, Bldg 27, Room 119. Students
will not be admitted without required
documents.

MUSIC**MUS 191** 1-3 Units
Musical Production: Orchestra

Prerequisite: Standardized audition.

Rehearsal and performance of orchestral accompaniment to staged musical productions. Public performance required. Two fully-staged 20th Century Chamber operas sung in English, directed by Paul Smith. Transfer Credit: CSU/UC

60107 05/06-06/30 P Smith

Lab U 6:40pm-10:00pm, KTD/PA072
and TR 6:40pm-10:00pm, KTD/PA072
(May 24 through June 21)

Students must participate in performances: 6/15, 6/16; 6/22, 6/27, 6/30, 6-9pm; auditions 5/6, 6-7:30pm, PA177.

MUS 193 1-2 Units
Musical Production: Cast

Prerequisite: Standardized audition.

Rehearse and perform all vocal music aspects of staged musical production. Public performance required. Two fully-staged 20th Century Chamber operas sung in English, directed by Paul Smith. Transfer Credit: CSU/UC

60108 05/06-06/30 P Smith

Lab U 6:40pm-10:00pm, KTD/PA072
and TR 6:40pm-10:00pm, KTD/PA072
(May 24 through June 21)

Offered for one student unit.
Students must participate in performances: 6/15, 6/16; 6/22, 6/27, 6/30, 6-9pm; auditions 5/6, 6-7:30pm, PA177.

60109 05/06-06/30 P Smith

Lab U 6:40pm-10:00pm, KTD/PA072
and TR 6:40pm-10:00pm, KTD/PA072
(May 24 through June 21)

and 4.2 hrs/wk TBA.
Offered for two student units.
Students must participate in performances: 6/15, 6/16; 6/22, 6/27, 6/30, 6-9pm; auditions 5/6, 6-7:30pm, PA177.

MUS 262 1.5 Units
Large Ensemble Techniques

Prerequisite: Standardized audition.

This class is designed to improve the practice, rehearsal, and performance skills of musicians in large ensembles. Previous large ensemble experience is recommended. Transfer Credit: CSU/UC

60523 05/06-06/30 P Smith

Lab 7 hrs/wk, KTD/PA072
Students must participate in performances: 6/15, 6/16; 6/22, 6/27, 6/30, 6-9pm; auditions 5/6, 6-7:30pm, PA177.

PHILOSOPHY**PHIL 110** 3.0 Units
Introduction to Philosophy

Prerequisite: English 98 or 98SL or English Placement Test or equivalent.

An introduction to major thinkers, movements and ideas in the western philosophical tradition. Transfer Credit: CSU/UC

60162 J Marmysz
Lec MTWR 9:00am-11:15am, KTD/
HC170

PHYSICAL EDUCATION

Note: All Physical Education courses are COED unless otherwise noted.

REHABILITATION FITNESS
(PE 70,72,74)

A complete fitness program for disabled students, emphasizing coordination, mental, emotional and social attitudes for improving healthy, independent, daily living functions. Physician's recommendations required.

No pre-registration for first time students; call Disabled Students Program at 415.485.9406.

PE 070 0.5 Unit
Adapted Aquatics

Prerequisite: Recommendation of student's physician and completed medical form.

Aquatic activity with emphasis on developing strength, endurance, flexibility, increased independence, and personal safety. Recommended for students with physical disabilities. Transfer Credit: CSU/UC

60260 M Gray
Lab MTWR 10:40am-12:00pm, KTD/PE/
POOL

PE 072 0.5 Unit
Adapted General Conditioning

Prerequisite: Recommendation of student's physician and completed medical form.

This is a general fitness class, designed to meet the overall fitness needs of students with disabilities. Transfer Credit: CSU/UC

60261 M Gray
Lab MTWR 9:10am-10:30am, KTD/
PE040

POLITICAL SCIENCE

PE 074 0.5 Unit

Adapted Yoga

Prerequisite: Recommendation of student's physician and completed medical form.

This course is a gentle stretching and relaxation class for the physically disabled adult. Emphasis on breathing, mind/body connection, and increasing strength and flexibility. Transfer Credit: CSU/UC

60500 M Gray

Lec MTWR 12:10pm-1:30pm, KTD/
PE060

PE 125H 0.5 Unit

Fitness, Cross Training

This course is designed to introduce principles and guidelines for improving fitness through a multi-sport approach. Students will participate in a variety of activities designed to improve their endurance, strength, speed, balance, and flexibility. Transfer Credit: CSU/UC

60327 W Lager

Lab MTWR 10:10am-11:35am, IVC/
BLDG21/POOL

Find Your Stroke



PE 156 0.5 Unit

Instructional Lap Swimming

Prerequisite: Knowledge and demonstration of efficient swimming skill.

Designed to provide stroke and cardiovascular development for students at all swimming levels. U.S. Master's Swimming Program will be available for those interested in the competitive aspects of swimming. Transfer Credit: CSU/UC

60386 W Lager

Lab MTWR 8:40am-10:00am, IVC/
BLDG21/POOL

PE 169 0.5 Unit

Weight Training

Weight training will introduce students to the basics of strength and endurance training. Emphasis will be placed on safety, flexibility, and the development of a personal training program. Transfer Credit: CSU/UC

60483 G Adams

Lab MTWR 9:40am-10:55am, KTD/
PE020

60018 G Adams

Lab MTWR 5:10pm-6:25pm, KTD/
PE020

POLITICAL SCIENCE

Become an Involved Citizen



POLS 100 3.0 Units

American Political Institutions

The study of American politics, emphasizing political power, political values, and current events. Transfer Credit: CSU/UC

60028 Y Bellisimo

Lec TWR 9:10am-12:00pm, KTD/TB101

SOCIOLOGY

SOC 110 3.0 Units

Introduction to Sociology

This course will explore the relationship between sociological explanations of human behavior and the methods and results of sociological inquiry when used to examine behavior. Transfer Credit: CSU/UC

60004 P Christensen

Lec MTW 10:30am-1:20pm, KTD/FH110

SPANISH

SPAN 101 5.0 Units

Elementary Spanish I

This course involves speaking, understanding, reading, and writing Spanish with an introduction to Hispanic culture. Labs and audiovisual materials are included. Transfer Credit: CSU/UC

60125 M Martinisi

Lec MTWR 9:00am-12:00pm, KTD/
HC169

Lab 9 hrs/wk, KTD/LC150

60126 M Martinisi

Lec MTWR 6:00pm-9:00pm, KTD/
HC169

Lab 9 hrs/wk, KTD/LC150

SPEECH

SPCH 110 3.0 Units

Introduction to Speech Communication

This survey course introduces practical verbal communication skills with an emphasis on speech performance. Transfer Credit: CSU/UC

60052 P O'Keefe

Lec MTW 10:10am-1:00pm, KTD/HC173

SPCH 120 3.0 Units

Interpersonal Communication

This course introduces principles of effective communication in interpersonal relationships. It is the study of verbal and nonverbal communication, person perception, conflict resolution, listening, and communication barriers. Students will learn to identify communication behaviors and patterns in interpersonal relationships, both theirs and others. Transfer Credit: CSU/UC

60053 G Stahl-Ricco

Lec MTW 10:10am-1:00pm, KTD/HC171

WORK EXPERIENCE EDUCATION

WE 298ABCD 1-4 Units

Occupational Work Experience

Earn college credit while working, whether paid or volunteer! Learn new skills and improve job knowledge. Personalized learning objectives are developed in cooperation with work supervisors and college instructors. Students must be enrolled in a minimum of seven units, including Work Experience. Transfer Credit: CSU

WE 298A **1.0 Unit**
Occupational Work Experience A
Prerequisite: Enrolled in 7 units and employed for 5hrs/wk.
60516 P Rilla
 Lec T 4:10pm-6:35pm, IVC/BLDG16/214

WE 298B **2.0 Units**
Occupational Work Experience B
Prerequisite: Enrolled in 7 units and employed for 10hrs/wk.
60517 P Rilla
 Lec T 4:10pm-6:35pm, IVC/BLDG16/214

WE 298C **3.0 Units**
Occupational Work Experience C
Prerequisite: Enrolled in 7 units and employed for 15hrs/wk.
60518 P Rilla
 Lec T 4:10pm-6:35pm, IVC/BLDG16/214

WE 298D **4.0 Units**
Occupational Work Experience D
Prerequisite: Enrolled in 7 units and employed for 20hrs/wk.
60519 P Rilla
 Lec T 4:10pm-6:35pm, IVC/BLDG16/214

WE 299ABC **1-3 Units**
General Work Experience
 Earn college credit while at work by learning or improving job knowledge or skills. Any type of work is suitable for General Work Experience. Personalized learning objectives are developed in cooperation with work supervisors and college instructors. Students must be enrolled in a minimum of seven units, including Work Experience. Transfer Credit: CSU

WE 299A **1.0 Unit**
General Work Experience A
Prerequisite: Enrolled in 7 units and employed for 5hrs/wk.
60520 P Rilla
 Lec T 4:10pm-6:35pm, IVC/BLDG16/214

WE 299B **2.0 Units**
General Work Experience B
Prerequisite: Enrolled in 7 units and employed for 10hrs/wk.
60521 P Rilla
 Lec T 4:10pm-6:35pm, IVC/BLDG16/214

WE 299C **3.0 Units**
General Work Experience C
Prerequisite: Enrolled in 7 units and employed for 15hrs/wk.
60522 P Rilla
 Lec T 4:10pm-6:35pm, IVC/BLDG16/214

Noncredit Courses

ENGLISH AS A SECOND LANGUAGE

The noncredit English as a Second Language Program offers free classes for beginning to intermediate level students. To register for Noncredit ESL classes, please contact the ESL Office, Harlan Center, Room 101, or call 415.485.9642.

New students must take a noncredit ESL placement test to assess their level before registering for classes. Registration will be completed after taking the placement test. Please visit Harlan Center Room 101 or call 415.485.9642 for more information and test dates.

Note: Due to space limitations, students may only register for one class at their level.

Classes are held on both the Indian Valley and Kentfield campuses.

ESLN 010 **0.0 Unit**
Beginning ESL
Advisory: NC ESL Placement Test or teacher recommendation.

This course will introduce beginning English learners to basic everyday English vocabulary, expressions and instructions to describe everyday actions, needs and abilities.

60341 06/18-07/28 L Burnett
 Lec TWR 8:10am-10:25am, KTD/PV5A

60347 06/18-07/28 J McMillan
 Lec MW 6:10pm-8:25pm, KTD/PE092

60349 06/18-07/28 J McMillan
 Lec TR 6:10pm-8:25pm, KTD/OH106

60350 06/23-07/21 M Shea
 Lec S 9:00am-12:50pm, KTD/HC171

60351 06/23-07/21 N Jacunski
 Lec S 9:00am-12:50pm, KTD/HC169

60352 06/18-07/28 M Shea
 Lec MW 6:10pm-8:25pm, IVC/
 BLDG27/228

ESLN 020 **0.0 Unit**
High Beginning ESL A
Advisory: NC ESL Placement Test or teacher recommendation.

In this high beginning ESL course, students will learn to ask for and give basic information about yesterday, today and tomorrow and to express basic likes, wants, needs,

abilities and obligations in conversation and in written form.

60416 06/18-07/28 H Casper
 Lec TWR 8:10am-10:25am, KTD/PV3

60418 06/18-07/28 K Privitt
 Lec MW 6:10pm-8:25pm, KTD/HC170

60420 06/18-07/28 K Hayne
 Lec TR 6:10pm-8:25pm, KTD/HC129

60421 06/23-07/21 K Hayne
 Lec S 9:00am-12:50pm, KTD/HC127

60485 06/23-07/21 K Knickerbocker
 Lec S 9:00am-12:50pm, KTD/HC129

60422 06/18-07/28 S Reilly
 Lec MW 6:10pm-8:25pm, IVC/
 BLDG27/233

ESLN 025 **0.0 Unit**
High Beginning ESL B
Advisory: NC ESL Placement Test or teacher recommendation.

In the second part of high beginning ESL, students will practice expressing basic likes, wants, needs, abilities and obligations and talking about yesterday, today and tomorrow. They will also begin to negotiate and interact on the telephone, at work and in the community.

60426 06/18-07/28 N Jacunski
 Lec MW 6:10pm-8:25pm, KTD/PV3

60429 06/18-07/28 F Fahouris
 Lec TR 6:10pm-8:25pm, KTD/HC126

60428 06/23-07/21 K Privitt
 Lec S 9:00am-12:50pm, KTD/HC170

ESLN 030 **0.0 Unit**
Low Intermediate ESL A
Advisory: NC ESL Placement Test or teacher recommendation.

ESLN 030 students know everyday survival English, but want to learn to talk about their experiences in life and at work. They learn to describe how their lives were before they came to this country. The focus is on learning more verbs and verb forms.

60430 06/18-07/28 P Seery
 Lec TWR 8:10am-10:25am, KTD/PV7

60432 06/18-07/28 J Terhune
 Lec MW 6:10pm-8:25pm, KTD/PV5B

60433 06/18-07/28 K Privitt
 Lec TR 6:10pm-8:25pm, KTD/PV4

60434 06/23-07/21 M Levin
 Lec S 9:00am-12:50pm, KTD/HC126

60435 06/18-07/28 P Johnson
 Lec TR 6:10pm-8:25pm, IVC/
 BLDG27/229

ESL VOCATIONAL

ESLN 035 0.0 Unit

Low Intermediate ESL B

Advisory: NC ESL Placement Test or teacher recommendation.

ESLN 035 is the second part of the low intermediate level. Students will review and build upon basic English skills and survival skills covered in Levels 010-030. They may read and discuss short adapted fiction or nonfiction in class and write about personal abilities and experiences.

60436 06/18-07/28 K Hayne
Lec TWR 8:10am-10:25am, KTD/PV6

60439 06/18-07/28 R Beal
Lec MW 6:10pm-8:25pm, KTD/PV4

60437 06/18-07/28 R Beal
Lec TR 6:10pm-8:25pm, KTD/HC173

60438 06/23-07/21 F Fahouris
Lec S 9:00am-12:50pm, KTD/HC173

ESLN 040 0.0 Unit

Credit ESL Preparation Course

Advisory: NC ESL Placement Test or teacher recommendation.

Students in ESLN 040 will continue to develop their intensive and extensive reading skills, make oral presentations and use an English dictionary, the library and the internet for simple research projects. In preparation for transitioning to credit ESL, regular attendance, homework and group participation are strongly encouraged.

60440 06/18-07/28 C Massion
Lec TWR 8:10am-10:25am, KTD/HC127

60441 06/18-07/28 M Levin
Lec MWR 6:10pm-8:30pm, KTD/BC101

60442 06/18-07/28 C Massion
Lec MTR 6:10pm-8:25pm, KTD/HC171

60443 06/23-07/21 S Reilly
Lec S 9:00am-12:50pm, KTD/BC101

ESLN NCLAB 0.0 Unit

ESL Noncredit Lab

Advisory: ESL Placement Test.

The ESL Lab is a self-paced, individualized, open-entry/open-exit course. Students will be able to use ESL software, audio tapes, videos and reading material to develop their skills in English.

60444 06/18-07/28 J Molloy
Lec T 6:30pm-8:30pm, KTD/HC128

60445 06/18-07/28 J Molloy
Lec W 6:30pm-8:30pm, KTD/HC128

ESL VOCATIONAL

ESLV 001 0.0 Unit

ESL Hotel/Restaurant Workers

Advisory - ESLN 20 and above

This course will emphasize English as Second Language for those who are in the hotel and restaurant fields and those who are seeking positions in these fields.

60501 06/18-07/28 K Bradley
Lec MTWR 8:10am-10:00am, KTD/
HC126

ESLV 003 0.0 Unit

Communication/Healthcare

Advisory - ESLN 20 or above

Designed for health care workers and others interested in health care fields, this course will focus on language skills necessary to function in a medical/dental environment. Emphasis on social and cultural skills for successful interaction with patients and co-workers.

60502 06/18-07/28 M Sukoski
Lec MTW 6:10pm-8:25pm, KTD/HC161



College of Marin uses Moodle for its online course delivery. The Moodle Learning Management Systems (LMS) is praised for its user-friendly features and superior functionality. A full range of Distance Education courses are currently offered in Moodle.

Please see the Moodle FAQ page to learn more at <http://www.marin.edu/DE/faq.html>

Distance Education

You can take courses using video or web-based formats. Online and hybrid (partially online and partially on-campus) courses are offered in COM's Moodle Learning Management System.

Innovative Education

The Latest Technology

College of Marin is using the latest technology to help you realize your educational goals. Now you can use your computer or television to get the courses you need to fulfill your educational goals.

Course descriptions for the Distance Education courses listed in this section may be found under their department headings on pages 20-34. To view the Distance Education listings and Course Welcome Letters online, go to <http://www.marin.edu/DE/online-courses.html>

Beyond the Traditional Classroom

If you have access to an Internet connection, you can take selected College of Marin courses anywhere, anytime. Our Distance Education program reaches beyond the traditional classroom in order to fill the educational and career needs of people who are not being served by more conventional approaches. Distance Education courses provide an excellent alternative for students who are unable to attend classes during regular hours, or who like to take additional units in a time-efficient manner.

High Academic Standards

All courses maintain the high academic standards of the College and most are transferable (see a counselor for details). College-level courses are available in a variety of convenient formats.

Course Welcome Letters

Please go to <http://www.marin.edu/DE/online-courses.html> to find the Course Welcome Letters for individual Distance Education courses, containing specific details about mandatory course meetings, weekly access requirements, instructor's contact information, waiting lists, books and materials, log on instructions, and course policies.

For information about student services, such as counseling, tutoring, financial aid, the Online Writing Center, and other student support services, go to the Student Services page at <http://www.marin.edu/DE/student/html>

Student Support Services

Are you new to Distance Education? Please see "Tips for Being a Successful Online Learner" at <http://www.marin.edu/distance/de-tips.html>

Video Courses

Students may purchase the complete set of History/Political Science courses from Intelecom. To place an order 24 hours a day, 7 days a week, visit the web site at www.intelecom.org and access the Student Store. Enrollments will remain open for the first two weeks of the semester.

Instructions for Distance Education
Courses are online at
<http://www.marin.edu/DE>

Internet Courses

COMPUTER INFORMATION SYSTEMS

CIS 110 **3.0 Units**
Introduction to Computer Information Systems
60010 M Ransom

ENGLISH

ENGL 150 **3.0 Units**
Reading and Composition (1A)
Prerequisite: English 120 or 120SL or English Placement Test or equivalent.
60132 A Klinger

ENGL 151 **4.0 Units**
Reading and Composition (1B)
Prerequisite: English 150 or equivalent.
60166 A Klinger

HEALTH EDUCATION

HED 130 **3.0 Units**
Contemporary Health Issues
60016 K Smyth

Video Course

HISTORY

HIST 100 **3.0 Units**
Major Trends and Selected Topics in American History
60024 H Fearnley
Orientation meeting date and time:
6/18/12, 6:00pm, KTD/OH96



Academic Information

Catalog

Although this schedule contains a summary of important policies and procedures, students are encouraged to review the college catalog. The current catalog is available online at www.marin.edu.

Graduation Deadlines

Apply for Summer 2012 Degree/Certificate

June 18 – July 19

Students who have met the degree/certificate requirements, and have filed an Application for Graduation by the deadline date, will be eligible to receive an Associate in Arts/Science Degree or a Certificate of Achievement. Information is available in the Counseling Office.

Prerequisites, Corequisites & Advisories

Prerequisite

A prerequisite is a condition of enrollment that a student is required to meet in order to demonstrate current readiness for enrollment in a particular course or program.

The college requires students to complete prerequisite courses with a grade of C, P, or higher prior to registering in the course requiring the prerequisites. Examples of courses which may require prerequisites:

- Courses for which specific prerequisites have been justified by content review, the appropriate level of scrutiny and any other validation procedures required by law (Title 5, 55201 a-f).
- Sequential courses in a degree-applicable program.
- Courses requiring a prerequisite to transfer to a four-year college.
- Courses requiring preparation to protect health and safety.
- Technical or vocational courses or programs that require special preparation.

Equivalent Course Work

Some prerequisites may be satisfied by equivalent course work from an accredited institution other than College of Marin.

Before enrolling in classes, please contact a counselor at 415.485.9432 for more information.

Prerequisite Equivalency/Challenges

Some prerequisites may be satisfied by equivalent course work from an accredited college/university other than College of Marin.

Students have the right to challenge prerequisites on certain, specified grounds and following necessary procedures. See <http://www.marin.edu/admissions/prerequisites/> for detailed information regarding the Prerequisite Equivalency/Challenge process.

Prerequisite Equivalency/Challenge Deadline

The deadline to submit the Prerequisite Equivalency/Challenge Form and supporting documentation is Monday, June 11, 2012 for summer classes.

Corequisite

A corequisite is a condition of enrollment consisting of a course that a student is required to take simultaneously in order to enroll in another course. Courses which may require corequisites include: courses that are part of a closely related lecture-laboratory pairing requiring concurrent enrollment.

Advisory

An advisory is a condition of enrollment that a student is advised, but not required, to meet before or in conjunction with enrollment in a course or educational program.

Other Limitations

Other limitations on enrollment may include:

- Courses that require public performance or competition.
- Blocks of courses for which enrollment is limited in order to create a cohort of students.

Probation & Dismissal

Standards For Probation

A student shall be placed on academic probation if he or she has attempted a minimum of 12 semester units of work and has a grade point average of less than C (2.0).

A student shall be placed on progress probation if he or she has enrolled in at least 12 semester units and the percentage of all units in which the student has

enrolled, for which entries of W, I, NC and NP were recorded reaches or exceeds 50 percent.

Standards for Removal of Probation

A student who is placed on academic probation shall be removed from probation when the student's accumulative grade point average is 2.0 or better. A student on progress probation shall be removed from probation when the percentage of units in the categories of W, I, NC, or NP drops below 50 percent.

Standards for Dismissal

A student who is on academic probation shall be subject to dismissal if the student has earned a cumulative grade point average of less than 1.75 in all units attempted in each of three consecutive semesters.

A student who is on progress probation shall be subject to dismissal if the cumulative percentage of units in which the student has been enrolled for which entries of W, I, NC, or NP are recorded in at least three consecutive semesters reaches or exceeds 50 percent.

A student who is subject to dismissal may submit a written appeal to the Dean of Enrollment Services. Dismissal may be postponed and the student continued on probation if the student completes a petition that provides evidence of extenuating circumstances and/or that shows significant improvement in academic achievement.

Readmission after Dismissal Deadline Date: June 21, 2012

In order to be considered for readmission, dismissed students must:

1. Meet with a counselor and complete or update a Student Educational Plan (SEP) and submit the SEP with their Petition to Return to the Dean of Enrollment Services.
2. File a Petition to Return no later than the June 21, 2012, deadline date. (Forms available online or at the Office of Admissions and Records). Students who fail to petition by the deadline or fail to show for their appointments will be denied and dropped from their classes.
3. Readmitted students may not be enrolled in more than 12 units. (Students may be limited to fewer units and other restrictions may also be imposed.)

Honor List

Students will be placed on a term honor list when their semester GPA is 3.0 or higher. These students may not be on probation or have any I, NP, or F grades, and must be enrolled in 12 units of letter-graded classes at the college.

Grading

In Progress Grades

An IP grade is only assigned for open-entry/open-exit classes or classes that span two terms. Students who receive an IP grade must re-enroll in the subsequent term or they will receive the alternative grade assigned by the instructor. The enrollment fee will be charged for re-enrollment.

Incomplete Grades

Students who received an Incomplete grade may not re-enroll in the same course until the incomplete work is completed and/or a final grade is posted to the student's academic record.

Pass/No Pass Option

In those courses which permit a student to be evaluated either on a P/NP or a letter graded basis, a student must select the P/NP option no later than 30 percent of the class. The option can be selected online during the registration period. After classes begin, students must submit a Change of Grading Option form to the Office of Admissions and Records. The option cannot be changed after the deadline date. To receive a pass grade, course work must be C level or higher.

Note: Some colleges and universities will not grant transfer credit for courses with pass/no pass grades.

Final Grades

Final grades will be available online at mycom.marin.edu. Check for Important Dates on page 3.

Transcripts

Please order your transcripts early to avoid any delays during peak periods. Students may receive two copies of their transcripts for free. Additional copies are \$6 per

copy. Rush transcripts are \$15 per copy. Transcript requests may be faxed. For instructions, go to the college website: www.marin.edu/admissions/transcript.htm.

Student Appeals and Grievances

Appeals and Grievances in the following areas should be directed to the Dean of Enrollment Services: academic progress, academic dismissal, admissions, attendance, financial aid, graduation, fee payment, refunds, California residency determination, and student records.

Grade Appeals and Grievances must be directed to the appropriate department and/or academic dean. Guidelines for filing an academic grievance, a student complaint against another student, cases of sexual harassment/discrimination, and unsafe assignments should be directed to the Dean of Student Development & Special Programs.

Please refer to the current college catalog for more detailed information.



Graduation/ Transfer Information

Transfer Admission Support

As a means to support transfer admissions, College of Marin participates in guaranteed admissions to specific University of California campuses, California State Universities, and private universities. College of Marin also offers cross enrollment at UC Berkeley to qualified students. Contact the COM Counseling Office for more information. In addition, the Counseling Department works with the Transfer Center, staffed for the purpose of helping students research transfer and admissions requirements.

A.A./A.S. Graduation Requirements

The Associate in Arts (A.A.) degree or Associate in Science (A.S.) degree will be awarded to any student upon satisfactory completion of all of the following seven requirements:

- Units**—The Associate in Arts (A.A.) degree and the Associate in Science (A.S.) degree require a minimum of 60 lower division units to include all the requirements indicated below and any additional elective units needed to satisfy the 60 unit minimum. Courses numbered 0-99 are not applicable to the Associate degree.
- Major Requirement**—At least 18 units must be taken in a single discipline or related disciplines as indicated in the COM Catalog.
- Scholarship**—An overall grade point average (G.P.A.) of 2.0 (C average) in all degree-applicable courses (numbered 100 and above) taken at COM and in all acceptable lower division courses transferred from other colleges.
- Residence**—Successfully complete at least 12 units in the major requirements at COM.
- Mathematics Proficiency**—One of the following options:
 - A satisfactory score on the Math Assessment Test, i.e. eligibility for a level beyond Intermediate Algebra (103), such as Math 104, 110, 115, 121, or 123 or
 - Completion of Intermediate Algebra (Math 103 or Math 103A plus 103B or Math 103X plus 103Y) with a grade of C or higher.
- General Education**—A minimum of 19 units of general education is required for the A.A. or A.S. degree. See the following general education categories and course listings.

7. **Application for Graduation**—It is the student's responsibility to submit an Application for Graduation by making an appointment with a counselor in the Counseling Department. All official transcripts from other colleges must be available in the Counseling Office by the application deadline date. All petitions and waivers must be attached to the application form by the deadline date.

General Education Courses

Please note that one of the general education courses must be a cross-cultural studies course. Most cross-cultural studies courses will satisfy the Cross-Cultural Studies Requirement and one other general education requirement. If a cross-cultural studies course is not found in another general education category, then additional units of general education are needed to meet the A.A. or A.S. degree.

A. Natural Sciences

Three units minimum—select one course.

Anthropology 101, 101L
 Astronomy 101, 105**, 117F++, 117L++
 Biology 100, 101, 105**, 107+, 108A, 109, 110, 110L, 115, 116, 120, 138*, 159, 162, 169A, 169B, 224, 235, 240
 Chemistry 105, 105L, 110, 114, 131
 Geography 101, 101L, 109, 112
 Geology 103, 105**, 109, 110, 114, 120, 120L, 121, 138*
 Physical Education 107+
 Physics 108A, 110, 207A

Geography 109 may be used to satisfy Category A or Category B, but not both.

++, **, *: *Natural Science credit is awarded for only one course in the groups listed above:*

B. Social and Behavioral Sciences

Three units minimum—select one course.

Anthropology 102, 103, 110, 204, 215
 Behavioral Science 103
 Biology 251
 Business 101
 Early Childhood Education 110, 112
 Economics 101, 102
 Ethnic Studies 110, 111, 112, 121, 151, 154, 242
 Geography 102, 109
 History 100, 101, 102, 103, 109, 110, 111, 112, 117, 118, 206, 211, 214, 215, 216, 238
 Political Science 100, 101, 102, 103, 104, 201, 203, 210, 211, 220
 Psychology 110, 111, 112, 114, 116, 140, 145, 204, 205, 230, 251
 Sociology 110, 112, 114, 140, 205, 230,

The following courses may be used to satisfy Category B or Category F, but not both: Ethnic Studies 111, 112, 121, 151; History 100, 117, 118; Political Science 100, 101.

Geography 109 may be used to satisfy Category A or Category B, but not both. Psychology 205 and Sociology 205 may be used to satisfy Category B or Category E, but not both. Social and Behavioral Science credit is awarded

for only one course in each of the following sets:

*Biology 251 or Psychology 251
 History 211 or Political Science 211
 Psychology 111 or Psychology 116
 Psychology 112 or Psychology 114
 Psychology 140 or Sociology 140
 Psychology 205 or Sociology 205
 Psychology 230 or Sociology 230*

C. Humanities

Three units minimum—select one course.

American Sign Language 101, 102, 110, 203, 204
 Architecture 100, 101, 102, 131
 Art 101, 102, 103, 104, 105, 106, 107, 108
 Biology 145
 Chinese 101, 102
 Communications 108 (3 units), 109A, 109B, 110, 160
 Dance 108
 Drama 110, 116, 117, 119
 English 151, 208, 212, 214, 218, 219, 220, 221A, 221B, 222, 223, 224, 225, 230, 235, 237, 240, 242
 Ethnic Studies 154
 French 101, 102, 108A, 108B, 203, 204, 225, 226
 Geology 145
 Humanities 100A, 100B, 107, 108, 109A, 109B, 114, 118, 125, 242
 Italian 101, 102, 108 (3 units), 203, 204, 225, 226, 228
 Japanese 101, 102, 108 (3 units), 203, 204
 Journalism 110, 160
 Music 101, 102, 105, 106
 Philosophy 110, 111, 117
 Spanish 101, 102, 203, 203HB, 204, 225, 226, 228A, 228B, 228C, 230A, 230B, 230C
 Speech 128, 140, 141

English 151 may be used to satisfy Category C or Category E, but not both:

Humanities credit is awarded for only one course in each of the following sets:

*Art 108 or Humanities 108
 Biology 145 or Geology 145
 Communications 109A or Humanities 109A
 Communications 109B or Humanities 109B
 Communications 110 or Journalism 110
 Communications 160 or Journalism 160
 English 242 or Humanities 242
 Speech 128 may be used to satisfy Category C or Category E, but not both.
 Ethnic Studies 154 may be used to satisfy Category C or Category B, but not both.*

D. Composition, Written

Three units minimum.

English 150 is required for the Associate degree, and must be completed with a grade of "C" or higher.

E. Communication & Analytical Thinking

Three units minimum—select one course.

Computer Information Systems 215
 Computer Science 130, 135, 200, 232
 English 130, 151, 155
 Mathematics 103, 103A and 103B, 103X and 103Y, 104, 104X and 104Y, 105, 109, 110, 114, 115, 116, 121, 122, 123, 124, 190

Philosophy 112
 Psychology 205
 Sociology 205
 Speech 110, 120, 122, 128, 130, 132
 Statistics 115

English 151 may be used to satisfy Category C or Category E, but not both.

Psychology 205 and Sociology 205 may be used to satisfy Category B or Category E, but not both. Credit is awarded for only one course.

Speech 128 may be used to satisfy Category C or Category E, but not both.

F. American Institutions

Three units minimum—select one course.

Ethnic Studies 111, 112, 121, 151
 History 100, 117, 118
 Political Science 100, 101

All courses listed in Area F may be used to satisfy Area B or Area F, but not both.

G. Cross-Cultural Studies

Three units minimum—select one course.

Cross-cultural studies courses which are listed in other general education categories will satisfy both the Cross-Cultural Studies Requirement and the requirement of one other category.

American Sign Language 110
 Anthropology 204, 215
 Art 108
 Communications 160
 English 235, 237
 Ethnic Studies 110, 111, 112, 121, 151, 154
 History 109
 Humanities 108
 Journalism 160
 Music 105
 Speech 128

H. Physical Activity

One unit minimum—select one course.

This requirement may be satisfied by degree-applicable activity courses in physical education or dance.

California State University General Education Pattern

Students should be aware that this list is subject to change and does not apply to the University of California System.

CSU General Education Certification

Approximately 124 semester units are required for a baccalaureate degree at a California State University, of which 48 units must be in general education within a prescribed pattern. **Thirty-nine units may be completed and certified in whole or in part at College of Marin.** The remaining nine units must be taken as upper division courses after transfer to the four year university.

Community colleges may certify no more than 30 units of general education from Subject Areas B, C, and D combined. The remaining units may be taken from Areas A and/or E.

Completion of 39 units of general education for the California State University System is not a requirement for admission. Students must make a request for certification prior to attending California State University by completing two forms: 1. Request for Transcripts; 2. Request for General Education Certification.

CSU United States History, Constitution, and American Ideals Requirement

In addition to general education, state universities and colleges also require United States History, and Constitution and American Ideals for graduation. Courses at College of Marin that fulfill the two-course requirement are:

1. One course in United States History to be chosen from the following: Ethnic Studies 111 or 112 or 121 or 151; History 100 or 117 or 118.
2. One course in Constitution and American Ideals to be chosen from the following: Political Science 100 or 101.

AREA A—COMMUNICATION IN THE ENGLISH LANGUAGE AND CRITICAL THINKING

Nine semester or 12-15 quarter units required with at least one course each from A1, A2 and A3
 Speech 132 may be used for A1 or A3, but not both.

A1—Oral Communication

Speech 110, 120, 122, 130, 132

A2—Written Communication

English 150

A3—Critical Thinking

English 130, 151, 155

Philosophy 112

Speech 132

AREA B—SCIENTIFIC INQUIRY AND QUANTITATIVE REASONING

Nine semester or 12-15 quarter units required with at least one course each from B1, B2 (at least one to contain a laboratory component identified in B3; laboratory courses are marked by an asterisk) and B4.

Astronomy 105, Biology 105, or Geology 105 may be used in B1 or B2, but not both.

Credit is given for only one course in each of the following sets:

Astronomy 105, Biology 105 or Geology 105
 Biology 107 or Physical Education 107
 Biology 138 or Geology 138
 Biology 160 or Environmental Landscaping 160
 Computer Science 117 or Math 117

B1—Physical Sciences

Astronomy 101, 105, 117F*, 117L*

Biology 105, 138*, 160

Chemistry 105, 105L*, 110*, 114*, 115*, 131*, 132*, 132E, 231*, 232*, 232E

Environmental Landscaping 160

Geography 101, 101L*, 112

Geology 103, 105, 109, 110, 120, 120L*, 121*, 138*, 201*

Physics 108A*, 108AC, 108B*, 108BC, 110, 207A*, 207B*, 207C*

B2—Life Science (Biological)

Anthropology 101, 101L*

Astronomy 105

Biology 105, 107, 109, 110, 110L*, 112A*, 112B*, 112C*, 115*, 116*, 120*, 138*, 162*, 224*, 235*, 240*

Geology 105, 138*

Physical Education 107

B3—Laboratory Activity

Laboratory courses marked with an asterisk (*) are included in B1 and B2 and will satisfy B3.

B4—Mathematics/Quantitative Reasoning

Computer Science 117

Math 104 or 104XY, 105, 109, 110, 114, 115, 116, 117, 121, 122, 123, 124, 223, 224

Statistics 115

Area C—Arts and Humanities

9 semester or 12-15 quarter units required with at least one course each in C1 or C2.

Credit is given for only one course in each of the following sets:

Art 108 or Humanities 108

Communications 109A or Humanities 109A

Communications 109B or Humanities 109B

Humanities 114 or Humanities 118

English 242, Humanities 242

American Sign Language 110 may be used for C-2 or D-1, but not both.

C1—Arts (Art, Dance, Music, Theatre)

Architecture 100, 101, 102

Art 101, 102, 103, 104, 105, 106, 107, 108, 110,

112, 113, 114, 116, 118, 130, 134, 140, 144, 146,

148, 152, 165, 170, 180, 185, 190

Communications 109A, 109B

Dance 108, 119, 121, 122, 126, 130A, 130B, 132, 135

Drama 110, 130, 150, 160, 161, 245, 260

Humanities 108, 109A, 109B

Music 101, 102, 105, 106

C2—Humanities (Literature, Philosophy, and Foreign Language)

American Sign Language 101, 102, 110, 203

Chinese 101, 102

Drama 116, 117

English 208, 212, 214, 218, 219, 220, 221A, 221B,

222, 223, 224, 225, 230, 235, 237, 240, 242

Ethnic Studies 154

French 101, 102, 108A, 108B, 203, 204, 225, 226

Humanities 100A, 100B, 114, 118, 125, 242

Italian 101, 102, 203, 204, 225, 226

Japanese 101, 102, 203, 204

Philosophy 110, 111, 117

Spanish 101, 102, 203, 203HB, 204, 225, 226,

228B, 228C, 230A, 230B, 230C

Speech 140, 141

AREA D—SOCIAL SCIENCES

Nine semester or 12-15 quarter units required with courses to be selected from at least 2 disciplines

Credit is given in Area D or Area E, but not both for the following courses:

Behavioral Science 103, 114; Biology 108A; Psychology 110, 111, 112, 114, 140, 145; Sociology 140

Credit is given for only one course in each of the following sets:

Behavioral Science 103 or Biology 108A

Biology 251 or Psychology 251

Communications 110 or Journalism 110

Communications 160 or Journalism 160

History 211 or Political Science 211

Psychology 111 or Psychology 116

Psychology 140 or Sociology 140

Psychology 205 or Sociology 205

Psychology 230 or Sociology 230

See catalog description for Psychology 112 credit limitation.

Courses listed in multiple groups in Area D may not be certified in more than one group.

American Sign Language 110 may be used for D-1 or C-2, but not for both.

Communications 160/Journalism 160 may be used for D-3 or D-4, but not both.

Ethnic Studies 111, 112, 121, 151 may be used for D-3 or D-6, but not both.

History 211/Political Science 211 may be used for D-4 or D-6 or D-8, but not all three areas.

D0—Sociology and Criminology

Administration of Justice 204

Sociology 110, 112, 205

D1—Anthropology and Archeology

American Sign Language 110

Anthropology 102, 103, 110, 204, 208, 215

D2—Economics

Economics 101

D3—Ethnic Studies

Communications 160

Ethnic Studies 110, 111, 112, 121, 151

Journalism 160

D4—Gender Studies

Communications 160

History 211

Journalism 160

Political Science 211

D5—Geography

Geography 102, 109

D6—History

Ethnic Studies 111, 112, 121, 151

History 100, 101, 102, 109, 110, 111, 112, 117, 118, 206, 211, 214, 215, 216, 238

Political Science 211

D7—Interdisciplinary Social or**Behavioral Science**

Behavioral Science 103, 114

Biology 108A

Business 101

Communications 110

Early Childhood Education 110, 112

Ethnic Studies 242

Journalism 110

Political Science 201

Psychology 140, 230

Sociology 114, 140, 230

Speech 128

D8—Political Science, Government, and**Legal Institutions**

History 211

Political Science 100, 101, 102, 103, 104, 117, 210, 211, 220

D9—Psychology

Biology 251

Psychology 110, 111, 112, 114, 116, 145, 204, 205, 251

AREA E—LIFELONG**UNDERSTANDING AND SELF-DEVELOPMENT**

3 semester or 4-5 quarter units

Credit is given in Area D or Area E, but not both for the following courses: Behavioral Science

103, Behavioral Science 114, Biology 108A,

Psychology 110, 111, 112, 114, 140, 145,

Sociology 140.

Credit is given for only one course in each of the following sets:

Behavioral Science 103 or Biology 108A

Psychology 140 or Sociology 140

See catalog description for Psychology 114 credit limitation.

Behavioral Science 103, 114

Biology 100, 108A

Counseling 130

Dance 119, 121, 122, 126, 132, 135

Health Education 112, 130, 140

Psychology 110, 111, 112, 114, 140, 145

Sociology 140

Transfer Curriculum for the University of California and California State University

The Intersegmental General Education Transfer Curriculum (IGETC) is a program that College of Marin transfer students can use to fulfill lower division general education requirements at both the University of California and the California State University. There are other options that fulfill general education requirements, but none of the options cover both the University of California and California State University.

The IGETC will permit a student to transfer from College of Marin to a campus in either the University of California or the California State University System without the need, after transfer, to take additional courses to satisfy campus lower division general education requirements. The IGETC is not an admission requirement to the University of California or California State University. Existing campus specific admission requirements for transfer students remain unchanged.

It is not advisable for all transfer students to follow the IGETC. The IGETC is not recommended for students planning to major in Engineering, Biological or Physical Sciences, or majors that require extensive lower division preparation. Contact a College of Marin counselor for further information regarding University of California or California State University schools where completion of the IGETC is not recommended.

IGETC Certification

All course work applicable to the IGETC must be completed and certified in its entirety prior to transfer in order to be accepted by the University of California or California State University. Certification indicates that all lower division general education requirements for the University of California or California State University have been met. Courses certified for IGETC must be completed with a grade of "C" or higher. It shall be the student's responsibility to request certification when requesting the last transcript from College of Marin prior to entering the University of California or California State University system. Students should contact the Counseling department to initiate IGETC certification.

In addition to the course requirements for each subject area, full certification for California State University must include completion of the Oral Communication Requirement. For the University of California, Oral Communication is not required, but the certification must include satisfactory completion of a Language Other Than English Requirement.

Courses taken at other institutions may be used to fulfill the IGETC. Students should be aware, however, that placement of courses within IGETC subject areas may vary from college to college. Placement of a course will be based on the college of attendance and its IGETC pattern at the time the course was completed.

Completion of the IGETC program will be certified by the last community college that the student attends. As a general rule, IGETC can be certified for California community college transfer students who have completed transfer units at a University of California, California State University, or independent college provided that the student has completed most of the transfer units at one or more California community colleges.

Advanced Placement Test

Advanced Placement Test (APT) scores can be used to satisfy certain areas under IGETC. Please see the AP Chart listed in the current 2011-2012 catalog. Contact a College of Marin counselor for further information regarding use of AP test scores.

IGETC Program

Students should be aware that this course list is subject to change.

Symbols:

- (+) Indicates that either the University of California or the California State University or both will limit transfer credit. Please refer to Courses from College of Marin Acceptable at the University of California (All Campuses) in the catalog, or consult a counselor.
- (*) Courses listed in multiple areas shall not be certified in more than one area except for courses in Language Other Than English, which can be certified in both areas 3B and 6A.
- (o) Note: Courses approved for Fall 91 may be taken prior to Fall 91. Courses approved for Fall 92 or later may not be taken prior to Fall 92.

AREA 1—ENGLISH COMMUNICATION

Students transferring to the University of California must complete one course from Group A and one course from Group B. Students transferring to the California State University must complete one course each from Groups A, B, and C.

Group A—English Composition

English 150

Group B—Critical Thinking/English Composition

English 151, 155*

Group C—Oral Communication (CSU Requirement Only)

Speech 110, 120, 122, 130, 132*

AREA 2—MATHEMATICAL CONCEPTS AND QUANTITATIVE REASONING

Three semester units—select one course.

Computer Science 117

Math 105, 109, 114, 115+, 116, 117, 121+, 122+, 123+, 124+, 223, 224

Statistics 115+

AREA 3—ARTS AND HUMANITIES

Nine semester units—select three courses.

Include at least one course from Group A and one course from Group B.

Group A—Arts

Architecture 100+, 101+, 102+

Art 101, 102, 103, 104, 105, 106, 107, 108+, 110

Communications 109A, 109B

Dance 108

Drama 110

Humanities 108+, 109A, 109B

Music 101, 102, 105

Group B—Humanities

American Sign Language 102*, 203

Chinese 102*

Drama 116, 117

English 208, 212, 214, 218, 220, 221A, 221B, 222, 223, 224, 225, 230, 235, 237, 240, 242+

Ethnic Studies 154

French 102*, 108A, 108B, 203*, 204*, 225*, 226*

Humanities 100A, 100B, 107, 114+, 118+, 125, 242+

Italian 102*, 203*, 204*, 225*, 226*

Japanese 102*, 203, 204

Philosophy 110, 111, 117

Spanish 102*, 203*, 203HB*, 204*, 225*, 226*,

228C, 230A, 230B, 230C

Speech 128

AREA 4—SOCIAL & BEHAVIORAL SCIENCES

Nine semester units—select three courses.

Courses must be selected from at least two disciplines.

Anthropology 102+, 103+, 110, 204, 208, 215+

Behavioral Science 103+

Biology 108A+, 251

Communications 110*, 160*

Early Childhood Education 110

Economics 101, 102

Ethnic Studies 110, 111, 112, 121, 151, 242

Geography 102, 109

History 100+, 101, 102, 109, 110, 111, 112, 117+,

118+, 206, 211, 214, 215, 216, 238

Journalism 110*, 160*

Political Science 100+, 101+, 102, 103, 104, 201, 210, 211, 220

Psychology 110, 111+, 112+, 114+, 116+, 140+,

204, 205+, 230+, 251

Sociology 110, 112, 114, 140+, 205+, 230+

Speech 128

AREA 5—PHYSICAL & BIOLOGICAL SCIENCES

Seven to nine semester units—select one course

from Group A and one course from Group B. At least one of the courses selected must include a laboratory. Courses that are labs or have a lab component are underlined.

Group A—Physical Sciences

Astronomy 101, 105+, 117E, 117L

Biology 105+, 138+, 160

Chemistry 105+, 105L, 114+, 115+, 131, 132+, 132E+, 231, 232+

Environmental Landscaping 160

Geography 101, 101L, 112

Geology 103, 105+, 109, 110+, 114, 120+, 120L,

121, 138+, 201

Physics 108A+, 110+, 207A+

Group B—Biological Sciences

Anthropology 101, 101L

Biology 107+, 109, 110+, 110L+, 112A, 112B,

112C, 115, 116, 120, 138+, 162, 224, 235, 240

Geology 138+*

Physical Education 107+

Language Other Than English

University of California Requirement only

May be met by one of the following:

-Two years of one language other than English in high school with a grade of C or higher.

-Completion of one of the following courses:

American Sign Language 101, 102*, 203, 204; Chinese 101, 102*, 203*, 204*, 225*, 226*; Italian 101, 102*, 203*, 204*, 225*, 226*; Japanese 101, 102*, 203, 204; Spanish 101, 102*, 203*, 203HB*, 204*, 225*, 226*, 230A, 230B, 230C.

California State University Graduation Requirement**In United States History, Constitution, and American Ideals**

This is not a part of the IGETC, but may be completed prior to transfer.

Select one course from Group A and one course from Group B.

Group A—United States History

Ethnic Studies 111*, 112*, 121, 151*

History 100+*, 117+*, 118+*

Group B—Constitution and American Ideals

Political Science 100+*, 101+*

Transfer Admission Guarantee (TAG) is available for the University of California at Davis, Irvine, Merced, Riverside, San Diego, Santa Barbara, and Santa Cruz.

Make a planning appointment with a College of Marin counselor now! Call 415.485.9432. TAG information is online at: <http://www.universityofcalifornia.edu/admissions/transfer/guarantee/index.html>.

Student Activities Program

Meet new people, share ideas, have fun

Beyond the classroom, the college encourages students to initiate and join in activities and programs which develop leadership ability, interpersonal skills, and community involvement.

Through involvement with student associations or college clubs, you can participate in a hands-on curriculum designed for your personal and professional development. Learn how to run effective meetings, work successfully with others, manage your time and commitments, assume or delegate responsibility, turn conflict into cooperation, gain self-confidence, and much more.

If you wish to take advantage of this unique aspect of the college curriculum, contact your student association or the Student Affairs Office for more information about the following programs and activities.

- Student Associations
- Student Senate
- Student Senate appointments to College Governance committees
- Clubs/Organizations
- InterClub Council
- Student Association Ev

ASCOM Student I.D. Card

Your student I.D. card entitles you to discounts from many local business, arts, and entertainment groups. Call 415.485.9390 for more details and updates. \$10 for the first I.D. card; \$5 to renew.

VOTER REGISTRATION

College of Marin students are encouraged to exercise their constitutional right to vote. Voter registration materials are available in the Offices of Admissions and Records, online at <http://www.sos.ca.gov/elections/> or by calling the toll-free voter registration hot line. 1.800.345.VOTE.

Associated Students College of Marin (ASCOM)

Kentfield Campus
Student Services Bldg. 241
Indian Valley Campus
Building 27 Rooms 119/120
415.485.9390

Office of Student Affairs

Kentfield Campus
Student Services Bldg. 250
Indian Valley Campus
Building 27 Room 117
415.485.9376

Emeritus Students College of Marin (ESCOM)

Kentfield Campus
Student Services Bldg. 146
415.485.9652
Indian Valley Campus
Administrative Center 140
415.457.8322

List or find services on Information Boards

Sponsored by the Associated Students

For information to post or for posting approval, contact the Student Affairs Office, KTD/SS Center 250, 415.485.9376.

On the Kentfield Campus

- Student/Faculty Events Board
- Club News Board

Expand your educational horizons!

Check out the clubs and activities happening at College of Marin

Clubs reflect a wide diversity of interests and focuses for student activity, involvement, and development. They provide a forum for learning beyond the classroom, and hands-on experience for gaining interpersonal and professional skills. Students at College of Marin have the opportunity to join existing clubs or create new clubs in order to explore a particular area of interest. For more information about clubs or student government, contact the Office of Student Affairs at 415.485.9376 or the ASCOM office on the Kentfield Campus at 415.485.9390.

Student Clubs and Organizations

The following is a list of organizations at College of Marin.

- Accessibility Rights Club
- Alpha Gamma Sigma Honor Society
- Artist Honor Society
- Association of Peer Tutoring
- Black Student Union
- Break Dance Club
- Breast Cancer Awareness Club
- Campus Greens
- Car Club - IVC
- Chess Club
- Cinema League Film Enthusiasts
- Club Exposed: Photography
- Club Metals: Jewelry
- Club Mud: Ceramics
- COMET: Journalism Club, Echo Times
- COM Legal Awareness Center
- Computer Network Club
- Dancer's Guild
- Debate Club
- Dharma Farm Club
- Drama Club
- Environmental Action Club
- Inky Fingers: Printmakers Club
- International Society
- Internet Radio Club
- Land Sustainability Club
- Latino Student Union (LSU)
- Life Drawing
- Marin Art and Music Alliance (MAMA)
- Meditation Club
- Model UN Club
- Mountain & Road Cycling Club
- Muslim Student Association
- Phi Theta Kappa Honor Society
- Rainbow Alliance: Gay/Lesbian Support
- Readers and Writers Club
- R.O.A.R.: Christian Campus Fellowship
- Rock Climbing Club
- Sailing Club
- Sculpture Club
- Spanish Club: Tertulia
- Student Art Association
- Student Nurses Association
- Students for Social Responsibility
- Transfer Club
- Veteran's Club

Directory of Student Services

Admissions & Records Offices

Kentfield Campus

SS Center 254; 415.457.8811, ext. 8822
 Open: M,T,F 8 am–4:30 pm
 W,R 8 am–6 pm
 Closed: Fridays June 8-Aug 3,
 Evenings June 25-Aug 2, July 4

Indian Valley Campus

Bldg 27 Room 109; 415.457.8811,
 ext. 8822
 Open: M,T 8am–6pm
 W,R,F 8am–4:30pm
 Closed: Fridays June 8-Aug 3,
 Evenings June 25-Aug 2, July 4

See Important Dates on page 3 for holidays. Check with Admissions and Records for expanded hours during registration.

Contact Admissions and Records for information regarding admission, registration, academic records, verifications, transcripts, class adds/drops, student petitions, name/address/SS number changes, and refunds.

It is the student's responsibility to keep the college informed of changes in address and/or telephone number(s). Fill out a green change card available in the lobby of the Offices of Admissions and Records or go online at www.mycom.marin.edu when such changes occur.

Assessment & Testing Offices

Kentfield Campus

SS Bldg Room 238; 415.485.9469
 Open: M–R, 9am–noon and 1pm–4pm;
 May be available other hours by appointment.

The Testing Office provides assessment testing for placement in Math, English, Chemistry, and ESL.

For placement test schedules or other assessment information, call 415.485.9469. Testing is by appointment only and picture identification is required.

Bookstore

Kentfield Campus

LC, First Floor; 415.485.9394
 Open M–R 8am–3pm, closed F
 (or as posted).

Textbooks, supplies, art materials, snacks, college clothing and memorabilia are sold in the Bookstore. As an added convenience, students are able to rent course materials in the store and on the store website. To order books online, follow this link: <http://marin.bncollege.com>.

Indian Valley Campus

Call for hours & location: 415.485.9394

CalWORKS

Kentfield Campus

LC 160, 415.485.9605
 Open: M–R 9am–4:30pm
 Closed: Fridays June 8-Aug 3

Indian Valley Campus

Appointments by request.

College of Marin, in partnership with the county, provides education and support services to students who are participants in the Calworks program. To participate, one must be identified and referred by the Marin County CalWORKS office. Services may include educational programs, internship opportunities, books, and parking vouchers, and are intended to support student success and entry in the workforce.

Campus Police Services

Lost and Found

Kentfield Campus

TB-1; 415.485.9455

Indian Valley Campus

C3 104; 415.883.3179

In case of emergency dial 911

At either campus, if you wish to have an officer contact you, call dispatcher at 415.485.9696.

The College Board of Trustees and the Administration are committed to maintaining a safe campus environment. Professional and highly trained police officers are employed to patrol our campuses 24 hours each day. They provide crime prevention education, respond to medical emergencies, and all other incidents requiring police assistance.

The Department also sponsors a Police Cadet Program to assist with traffic related matters and to provide concerned students with an escort to and from the parking lots when available. These services can be arranged by contacting the Police Department at 415.485.9455.

Parking Information

Parking permits are required at all times, including evenings (except Saturdays, Sundays, and school holidays). Be sure to read the signs at the entrances to parking lots. The signs explain what type of permit is allowed in the lot (staff or student), and include any additional parking regulations. For student parking lot locations, see the campus maps.

Daily permits and term permits are valid at either campus. All California Vehicle Codes can be enforced in campus parking lots. Obey all signs and markings. All vehicles improperly parked will be cited, and may be towed.

Daily Parking Permits

You may purchase a daily parking permit from dispensers located in several student parking lots. In the event of a dispenser malfunction, you must purchase a daily permit from a different machine. Please report all malfunctions to the campus police at 415.485.9696. The cost for a daily permit is \$3 (subject to change). Daily permits must be visible on the driver side of the vehicle dashboard.

Term Parking Permits

A term permit is much more convenient, and will save you money, compared to a daily permit. Summer session permits are \$20 (subject to change) and are available for purchase online via the MyCOM Portal beginning April 18, 2012. This convenient option will be offered through Parking Plus and a nominal handling fee will be charged.

In person purchase of parking permits at the Offices of Admissions & Records is available beginning June 18, 2012 (the first day of the summer session). In person parking permits are now ordered at designated kiosk computers in the Admissions Lobbys, then picked up & paid for at the Admissions counter.

Disabled Students Parking

No parking permits are required for disabled students. A disabled placard or license plate issued by the State of California Department of Motor Vehicles must be displayed.

Financial Aid Students Parking

Students receiving Financial Aid are permitted to purchase parking permits at half price.

Note: Due to construction, parking lot closures are in effect on the Kentfield campus. Please refer to the Kentfield campus map for lot closure information. We appreciate your patience.

Child Development Program

The College of Marin Child Development Program provides high quality early education for the infants, toddlers, and preschool age children of COM students, with priority going to low-income student families. Centers are located on the Kentfield and Indian Valley campuses. The centers provide child care during fall and spring semesters and are open M–R, 7:45am–5pm, and on F, 7:45am–1pm. The Preschool Centers are closed during the summer months. The Early Head Start Infant Toddler Center is open in summer on a limited basis.

The Infant Toddler and Preschool Centers serve as demonstration classrooms that provide child observation, research and practicum opportunities, student teacher training, and Work Study jobs for COM students who are taking courses in Early Childhood Education, Pediatric Nursing, Child Psychology/Human Development, Behavioral Science, and related fields.

Infant Toddler Center

IVC Early Head Start Infant Toddler Center: Bldg 12; 415.457.8811, ext. 8171

The Early Head Start Center on the Indian Valley Campus provides infant/toddler care to student families with children ages birth to three years. There is no cost to eligible families.

To apply, please call Marin Head Start at 415.883.3791 or visit <http://www.camarin.org/headstart.html> to download an application. Please be sure to indicate on the application that you are applying for the IVC Early Head Start Center.

Preschool Centers

Kentfield Children’s Center: AC 40, downstairs, 415.485.9468

Indian Valley Children’s Center: Bldg 12, 415.457.8811, ext. 8170

The COM Children’s Centers are California State Preschool Programs and provide part- and full-day preschool on both the Kentfield and Indian Valley campuses for the preschool age children of COM students. A limited number of full-cost slots are available for COM faculty and staff.

Eligibility for enrollment in the Preschool Centers is based on several factors:

1. Child’s Age: Children must be three years of age by December 2 of the academic year to be eligible for enrollment.
2. Family need for child care—COM employee or COM student status: At least one parent must be either an employee of COM or a COM student. Student parents must be enrolled in at least 6 credit units or at least 9 hours of non-credit ESL each semester. All courses must lead to a vocational or educational goal, such as an associate degree, a skills certificate, or transfer to a four-year university. COM student parents must make academic progress every semester to continue to be eligible for child care services.
3. Family Income: Child care fees are based on family income and may be subsidized or full cost:
 - a. Subsidized fees: Fees for eligible student families are subsidized by the California Department of Education and 10,000 Degrees (formerly Marin Education Fund) and are on a sliding scale that ranges from no cost to full cost, depending on family income and family size. Priority for subsidized child care goes to the lowest income student families.
 - b. Full cost fees: COM students whose incomes exceed state guidelines for subsidized care pay full cost fees, as do faculty and staff.

The Children’s Centers offer a play based preschool curriculum that supports children’s cognitive, social-emotional, and physical development. The children enjoy age appropriate learning activities and projects that support their developing ideas and interests. Activities include creative arts and music, dramatic play, blocks, games, early literacy, sand and water play, math and science explorations, and large motor play, such as climbing and tricycle riding. Children enjoy a nutritious breakfast, lunch, and afternoon snack each day. Meals are cooked on site and served family style, with teachers joining children at the table for conversation and community building. The program offers parent education and partners with a variety of community-based agencies, such as the Early Childhood Mental Health Program, Parent Services Project, and Raising A Reader, whose services support family success and children’s healthy development.

Please see the Child Development Program website to download a Preliminary Application for the

Preschool Center: http://www.marin.edu/student_services/child_care.htm. For more information, please call the Child Development Program Office at 415.457.8811, ext. 8221.

Counseling Services

Appointment Desk Hours

Open: M-F, 9am–4pm, KTD, SS 212
 Call 415.485.9432 or 415.485.9430
 E-mail: susan.scott@marin.edu

IVC Location

Bldg 27 Rooms 105/106
 (Closed 1st and 3rd Thursdays
 11am-12:30pm during Spring and Fall semester.)

Note: Counseling Services are available for both Kentfield and Indian Valley Campuses

Note: Counselors’ hours and schedules vary throughout the year.

If you need help in planning your educational goals, you are urged to make an appointment with a counselor.

There are also a limited number of counselors available on a “drop-in” basis. These drop-in sessions are designed to be brief and should not be viewed as full counseling sessions. Please check at the KTD Counseling Services Office for the current drop-in schedule.

Disabled Students Programs and Services

Kentfield Campus

LC 115; 415.485.9406
 Open: M-F 8:30am–4:30pm
 Evenings by appointment.

Indian Valley Campus

Open: W 1:30-4:30pm, Bldg 17

The Disabled Students Program provides services for students with learning, physical, communicative, and psychological disabilities. Services include academic, vocational, career, and personal counseling as well as diagnostic testing/remediation for the learning disabled. The program also offers accommodations such as readers, note-takers, and interpreters, and provides adaptive equipment loan, and special classes. Please call for information on Adapted Physical Education, Study Skills, and other special classes, as well as services at the Indian Valley Campus.

Intensive English Program Fall 2012 Class Schedule

Classes taught in Novato, California

Welcome au pairs, residents, and F-1 Students!

The Intensive English Program is an international community of English language learners located at the beautiful, naturally landscaped Indian Valley Campus in Novato, California. Small classes, excellent instructors, and fun, but rigorous coursework are key to our 30 years of success in Marin County. Come learn English with us at our wonderful Indian Valley Campus!

For information about classes, please call 415.883.2211, ext 8579, or write sara.oser@marin.edu. Visit our web site at www.marin.edu/iep or www.marin.edu and click on "Intensive English Program." Program schedule is subject to change.

Time	Tuesday	Wednesday	Thursday	Friday
9:10 am - 11:35 am	Writing with Reading	Speaking / Listening / Pronunciation	Writing with Reading	Speaking / Listening / Pronunciation
Lunch 11:35 am - 12:30 pm	Lunch 11:35 am - 12:30 pm	Lunch 11:35 am - 12:30 pm	Lunch 11:35 am - 12:30 pm	Lunch 11:35 am - 12:30 pm
12:30 pm - 2:45 pm	Grammar for Oral and Written Communication	Idioms and TOEFL Preparation	Grammar for Oral and Written Communication	Idioms and TOEFL Preparation

16-Week Course August 21 - December 7, 2012		8-Week Course Session A August 21 - October 12, 2012		8-Week Course Session B October 16 - December 7, 2012	
Course Name	Course Fee	Course Name	Course Fee	Course Name	Course Fee
IEP 20 hours	\$2500 F-1 Students	IEP 20 hours	\$1175	IEP 20 hours	\$1175
IEP 20 hours	\$2325	IEP 15 hours	\$975	IEP 15 hours	\$975
IEP 15 hours	\$1925	IEP 10 hours	\$725	IEP 10 hours	\$725
IEP 10 hours	\$1425	IEP 5 hours	\$375	IEP 5 hours	\$375
IEP 5 hours	\$775				

- I-20s available for F-1 students and F-1 transfers. Contact paulette.foster@marin.edu
- TOEFL iBT/Institutional Prep and Testing
- Au pairs and professionals welcome!
- Non F-1 students-including au pairs-choose from one 16-week course or two 8-week courses
- Field trips and cultural activities to enhance learning and build community.

ESL—English as a Second Language

For more than twenty years, College of Marin has addressed the needs of English learners through its high quality English as a Second Language (ESL) Programs. The college has helped countless Marin residents and international students from more than 50 countries fulfill their educational, career, and personal goals.

College of Marin offers three ESL programs depending on students' academic goals and language levels:

1. **Noncredit ESL**—This program provides free morning, evening, and Saturday classes, on and off the Kentfield Campus, for students at beginning levels of English. Classes are open-entry/open-exit throughout the semester. For more information on classes or registration call 415.485.9642.
2. **Credit ESL**—These academic English courses are for intermediate to advanced English speakers. Prior to enrollment, students have their English level assessed to provide them with information to make informed decisions when enrolling in credit ESL courses. For more information see pages 54-55 of this schedule or call 415.485.9642.
3. **Intensive English Program (IEP)**—This program is fee-based with high quality classes in academic English on the Indian Valley Campus for international students and others who already live in the U.S. and desire to improve their English skills for college, work, or general communication. Full program meets Tuesday through Friday, 9 am to 2:45 pm. Part-time programs are also available. Tuition (from \$375 up, depending on program) and testing fee (\$50 for F-1 students, \$25 for others) are payable before classes start. For more information, call 415.883.2211 ext. 8579.

EOPS—Extended Opportunity Programs & Services

Kentfield Campus

LC 160; 415.485.9605

Open: M–R 9am–4:30pm

Closed: Fridays June 8-Aug 3

Indian Valley Campus

Appointments by request.

EOPS offers assistance to students who meet the EOPS state guidelines for eligibility. Support services may include counseling (academic, personal, and career) to assist EOPS students in planning their

educational or career goals), tutoring, book grants, and peer advisement.

CARE is an additional support program for EOPS eligible students who are also TANF/CalWORKs parents. For students who qualify for CARE, CARE grants may be available for books, transportation, and childcare.

Financial Aid Offices

Kentfield Campus

SS Bldg Room 236; 415.485.9409

Open: M-F 9am -4pm

Closed: Fridays June 8-Aug 3; July 4

Indian Valley Campus

Bldg 27 Room 107; 415.457.8811, ext. 8118

Open: M-R 9:30am-3pm

Students enrolled in degree, transfer, or certificate programs may apply for financial aid. Assistance for school and living expenses is available through a variety of federal and state loans, grants, and work programs awarded to students who meet eligibility and financial need requirements.

Application Procedures

Students must file a Federal Student Aid Application (Free Application for Federal Student Aid). Some programs (10,000 Degrees Grants, Cal Grants, and loan programs) may have additional application forms. Once the initial form is filed, the Financial Aid Office may request additional forms and verifying documentation. Applications are available from the Financial Aid Office or online at www.fafsa.ed.gov. Forms for the next academic year are available in January. Some programs have a March 1 deadline. Information on the application procedure is available from the Financial Aid Office.

Application Deadline

Applications are still being accepted for this term. Apply for spring 2011 and fall 2011 online at www.fafsa.ed.gov.

Food Service

Kentfield Campus Cafeteria

SS Bldg; 415.456.7661

Open: M-R (hours as posted)

The Student Services Center also has vending machines.

Indian Valley Campus

Vending Services

Food/Drink vending machines are available in Bldg 27 Room 121; Drink/ Snack vending machines are available in Pomo 150 and a Drink vending machine is located at the pool.

Health Center

Kentfield Campus

HS, Parking Lot 6; 415.485.9458

Open: M-R 8:30am-4pm; F 8am-noon

Closed: Fridays June 8-Aug 3; July 4

Please call for hours and location.

The Student Health Center is available to all currently registered students during the semester. We provide first aid, health education, care and treatment for short-term medical concerns, OTC and some prescription medications, immunizations, TB testing, voluntary insurance plans, physical exams for COM academic programs and college entrance, flu shots, physician appointments, and more. Personal counseling is available through our Counseling Department by calling 415.485.9432 for an appointment.

Job Placement/Housing Center

Kentfield Campus

SS Bldg Room 206; 415.485.9410

Fax 415.457.3896

job.placement@marin.edu

www.marin-csm.symplicity.com

Office hours for job referrals:

Open: M-F 10:30am-4pm

Closed: Fridays June 8-Aug 3; Evenings June 23-Aug 2; closed July 4

College of Marin's Job Placement/Housing Center assists students, alumni, and community members find employment and off campus housing. The services provided are job/housing posts on the free online job service, Reader Boards, binders and bulletin boards. Job postings and housing opportunities are visible at both the IVC and Kentfield campuses. Personal assistance is available for job and housing seekers by appointment. Employment opportunities consist of full-time, part-time, temporary and volunteer in a variety of fields. Job fairs take place twice a year.

The web address for our online service is <https://marin-csm.symplicity.com>.

Libraries

Kentfield Campus

LC Second Floor; 415.485.9756

www.marin.edu/lrc

Open: M-R 8am-9pm; F 8am-4pm

Note: The Library is closed to patrons during winter break (12/23/11 through 1/23/12). During these times, however, staff may be available for limited hours to process fines and fees. Please call 415.485.9656 to make arrangements.

Registered students and community members may apply at the Library Loan Desk for a free library card which enables cardholders to check out circulating materials and use databases from off-campus. Students enrolled at either campus may borrow books and other materials from the Kentfield Library. IVC students are encouraged to contact the Kentfield Library Reference Desk with any questions related to their research needs at 415.485.9475.

The Library has over 100,000 books available for circulation. Some books and course materials are placed behind the Loan Desk on reserve for limited circulation. Hundreds of magazines, newspapers, and journals are also available in hard copy, as well as electronically.

Wireless access is available in the Library and in other areas of the Learning Resources Center. There are more than 20 computers in the library for limited use by students and visitors. These computers provide access to the online catalog for books, to databases, and to the Internet. Library databases make available—even from off-campus—a variety of reference resources as well as full-text articles from magazines, journals, and newspapers. To access resources visit www.marin.edu/lrc.

Students interested in learning more effective research methods should consider enrolling in Library 110, a self-directed, research skills course (one UC transferable unit).

For more information visit the Library's home page at www.marin.edu/lrc.

Indian Valley Campus

For all library related questions call 415.485.9475.

Media Center/Language Lab

Kentfield Campus

LC 120 Second Floor; 415.485.9645

Open: M-R 8am-9pm; F 8am-4pm

The Media Center/Language Lab is a listening and viewing area where students have access to a variety of media materials, including CDs for modern language courses as well as DVDs and videocassettes for media courses. Also available for student use are IBM compatible computers with CD-ROM burners, and two Mac G5s. These computers have software installed on them to meet course needs. A printer is available for student use.

Outreach and School Relations

Kentfield Campus

SS Bldg Room 232; 415.48.9663
 Open: M–F, 8am–4:30pm
www.marin.edu/departments/outreach/
 Closed: Fridays June 8-Aug 3; July 4

Indian Valley Campus

Bldg 27 Room 117
 Open: By Request

The Office of Outreach and School Relations works to develop and nurture contacts with public high schools in and outside of Marin County; establish contacts with community based organizations serving prospective COM students; network with elementary and middle schools in Marin County to develop a pipeline of information and support for prospective students and their parents; sustain the Student Ambassador program as a primary recruitment tool for COM; develop and produce events that highlight college programs and opportunities for potential students; serve as a community public relations agent for COM; assess needs in the community and bring detailed reports to COM administration for review and possible action for new program development; facilitate recruitment and retention programs for minority students; and provide educational presentations to the community on issues of higher education access, financial aid/scholarships, advocacy, immigration, cultural sensitivity, college life, careers, and more.

In support of COM's enrollment management goals, the Office of Outreach and School Relations strategically develops, implements and assesses workshops, presentations, and events for high school students, their parents, and community based organizations who serve high school aged clients, as well as students attending high school diploma and GED programs.

Phi Theta Kappa Honor Society

Phi Theta Kappa is the world's oldest, largest, and most prestigious association of community college honor students. Phi Theta Kappa provides many academic and personal services to support student success, including scholarships. For more information about becoming a member, please contact the Student Affairs office at 415.485.9376 or visit www.ptk.org.

Single Stop

Kentfield Campus

SS Bldg Room 124; 415.457.8811 ext. 7761
 Open: M–R 9am–4:30pm
 Closed: Fridays June 8-Aug 3

Single Stop services are available to all COM students, immediate family members of students, and COM staff. Many students are faced with obstacles that make it difficult to stay in school. Single Stop helps connect students to resources that can help. We offer tax preparation by IRS certified tax preparers, benefits screening and enrollment assistance, financial counseling and legal assistance by a licensed attorney. If eligible, benefits screening provides access to food stamps, healthcare, reduced utility bills, cash aid, affordable childcare and low-income housing. All Single Stop services are FREE.

Student Affairs Office

Kentfield Campus

SS Bldg Room 250; 415.485.9376
 Open: M–F 8am–4pm
 Closed: Fridays June 8-Aug 3; July 4

A complete description of student clubs and activities is listed separately in this schedule on page 96.

Transfer/Career Center

Kentfield Campus

SS Bldg Room 202; 415.485.9671

Call or view Web site www.marin.edu/student_services/transfer.htm for current hours.

The Transfer/Career Center provides information and counseling support to all students intending to transfer to a four-year college or university and those interested in investigating career options. An extensive library of college catalogs is maintained, as well as computerized career information. No appointment is needed.

Tutoring and Learning Center (TLC)

Kentfield Campus

LC 160; 415.485.9620
 Open: M–R 9am–4:30pm
 Closed: Fridays June 8-Aug 3

Indian Valley Campus

Bldg 17
 Open: M–R 9am–4:30pm
 Closed: Fridays June 8–Aug 3

The Tutoring and Learning Center (TLC) offers FREE drop-in peer tutoring for currently enrolled COM students in a wide range of academic subjects. All tutoring sessions are small groups and the schedules are posted in the Learning Resource Center, room 160 at KTD, Buildings 17 and 27 at IVC, and online at www.marin.edu under Student Services/Tutoring. Tutoring helps students improve understanding of course material, earn higher grades, improve study skills and study habits, and get to know fellow students in a dynamic learning environment.

Veterans Office

Indian Valley Campus

Building 27; East Hall 109, 415.457.8811, ext. 8822

Open: M–F 8am–4pm

Closed: Fridays June 8–Aug 3; July 4

College of Marin is approved as an educational facility for veterans and their dependents.

- Eligible new and returning veterans/dependents are required to complete the Veteran Application Packet (available from the Office of Admissions & Records). The completed packet must be submitted to the Designated School Official (DSO) in the Office of Admissions and Records.
- New and returning veterans/dependents are required to make an appointment with the College of Marin designated veteran counselor. Students must declare a College of Marin, VA-approved educational objective prior to VA certification.
- Each term, continuing veterans/dependents are required to submit a Veteran Benefit Card to the DSO in the Office of Admissions and Records. If the veteran's/dependent's original educational objective changes, the student is required to meet with the College of Marin designated veteran counselor to report the new objective prior to VA certification.

U.S. Department of Veterans Affairs Contact Information:

www.gibill.va.gov
 VA Education: 1.888.442.4551
 Other VA Benefits: 1.800.827.1000
 TTD: 1.800.829.4833

Oportunidades Educativas

College of Marin fue fundado en 1926 y ofrece a los estudiantes la oportunidad de obtener el título de Asociado en Artes (AA), de transferir créditos académicos a las Universidades de California (UC) o a las Universidades Estatales de California (CSU) y también a cualquier otra universidad. El colegio ofrece certificados vocacionales en varios programas. College of Marin está dispuesto a servir a todos los habitantes que viven en el distrito del colegio.

Matrícula abierta para todos

Discriminación positiva

De conformidad con el Título IX de las Enmiendas de Educación de 1972, la Ley de Igualdad de Oportunidades en el Empleo de 1972 (Título VII de la Ley de Derechos Civiles de 1964 como ha sido enmendada), la Ley de Derechos de 1991 y el Apartado 504 de la Ley de Rehabilitación de 1974 y la Ley de Americanos con Discapacidades, es norma del Marin Community College District no discriminar contra ninguna persona basándose en su raza, color, religión, edad, sexo, ascendencia, orientación sexual, nacionalidad de origen, estado civil, afección (cáncer), discapacidad física o mental, o condición de veterano de la era de Vietnam en todos sus programas y actividades educativas y de empleo, sus normas, prácticas y procedimientos. Los estudiantes tienen derecho a presentar una queja interna o una queja a la Oficina de Derechos Civiles.

College of Marin, de conformidad con la Ley de Igualdad de Revelación en Deportes, ofrece información concerniente al funcionamiento de su programa intercolegial de deportes. En la Oficina de Ingresos y Expedientes, en la Biblioteca y en el Departamento de Deportes está disponible un informe completo para la consideración del público.

La norma 5.004 de College of Marin prohíbe el acoso verbal, físico, visual y sexual de cualquier solicitante, empleado o estudiante por cualquier empleado del Distrito en base a cualquier categoría o

combinación de categorías discriminatorias prohibidas por ley estatal o federal. Quienes no sean empleados, mientras estén en propiedad del distrito, se espera que sigan estas recomendaciones. Es además norma de este Distrito asegurar igualdad de oportunidades en todos sus programas y en todos los aspectos de sus empleos. La falta de dominio del idioma inglés no será obstáculo para la admisión y participación en los programas de educación vocacional.

Pueden producirse cambios sin previo aviso

Las normas, directrices, disposiciones, procedimientos, honorarios, cursos, horarios y servicios de los estudiantes descritos en esta publicación están sujetos a cambio en cualquier momento sin previo aviso. El Colegio se reserva el derecho de modificar los honorarios, declaraciones y procedimientos contenidos en la presente. Los honorarios y procedimientos están sujetos a cambio en cualquier momento por la Legislatura Estatal y el Consejo de Administración. Es responsabilidad de los estudiantes cumplir con los requisitos del Colegio y mantenerse informados de los mismos. Cuando se produzcan cambios, los mismos estarán incluidos en la siguiente publicación habitual del Catálogo u Horario de Clases, o anunciados en Internet en www.marin.edu. Clases pueden ser canceladas por insuficiente matriculación a discreción del College.

Contactos

Coordinador de ADA / Oportunidades Equitativas de Empleo

Linda Beam

Decano Ejecutivo, Recursos Humanos (o designado)
Centro Administrativo, Campus Kentfield
415.485.9504

Coordinador de Título IX / Sección 504 (Discapacidad)

Arnulfo Cedillo

Director de Asuntos Estudiantiles
Centro SS, Aula 251, Campus Kentfield
415.485.9375

Coordinador de Género y Equidad

David Cook

Director Ayuda Financiera
Centro SS, Aula 263, Campus Kentfield
415.485.9405

Política de matrícula abierta

Es norma del College of Marin que a menos que sea específicamente exento por ley, todos los cursos, o parte de un curso o clase, cuya asistencia deba ser comunicada para ayuda estatal, estarán completamente abiertos para matrícula y participación de cualquier persona que haya sido admitida al Colegio y que reúna los requisitos esenciales según se hayan establecido con arreglo al Capítulo II, División 2, Parte VI, Título 5 del Código de California.

Números de Teléfono Importantes

Solicite una persona que hable español

Ingresos y Expedientes: 415.457.8811, ext. 7722

Orientación con un Consejero Académico: 415.485.9432

Inglés como Segunda Lengua (ESL): 415.485.9642

Policía (emergencia): 911

Ayuda financiera para estudiantes

Todos los estudiantes matriculados y aquellos que deseen matricularse en un programa académico o vocacional del College of Marin pueden solicitar ayuda financiera. Los estudiantes que reúnen los requisitos económicos, así como otras condiciones, reciben fondos que provienen de varios programas federales, estatales y de la propia comunidad, que ayudan a cubrir el costo de los estudios y los gastos necesarios para vivir. El College of Marin ofrece a los estudiantes fondos de los siguientes programas.

Plazos para la presentación de solicitudes

1 de marzo

Los estudiantes que soliciten subvenciones de Cal Grants y becas del Marin Education Fund y College of Marin Foundation necesitan presentar la solicitud de ayuda estudiantil federal (llamada Federal Student Aid Application) y formularios suplementarios antes del 1 de marzo para el año escolar 2011-12.

Formas de Costear la Educación Universitaria

Programas de ayuda financiera

Subvenciones y becas

Becas Federales Pell: Conceden entre \$400 y \$5350 por año, según el caso individual

Becas SEOG (Federal Supplemental Educational Opportunity Grants): Subvenciones de entre \$400 y \$2.000 para los estudiantes más necesitados económicamente, que además califiquen para Pell Grants

Becas EOPS (Extended Opportunity Programs & Services Grants): Este programa proporciona fondos para libros así como servicios de orientación para aquellos estudiantes que califiquen. (Para mayor información, ver la páginas 10 and 100.)

Becas BOGG (Board of Governors Fee Waivers): Los residentes de California que se califiquen no tienen que pagar la matriculación. Ver información adicional en la página 8 y, para su conveniencia, hay un formulario BOGW en la página 11.

Cal Grants: El estado de California concede subvenciones que oscilan entre \$530 y \$1.550 por año a estudiantes que califiquen.

Becas MEF (Marin Education Fund Grants): Los residentes del Condado de Marin pueden solicitar subvenciones MEF, que conceden entre \$400 y \$4.000 por año. Para más información llame al 415.459.4240.

Becas College of Marin Foundation: La fundación benéfica del College of Marin recauda fondos dentro de la propia comunidad para conceder becas a estudiantes que reúnan los requisitos académicos y económicos. Las becas oscilan entre \$250 y \$1.000 por año y están disponibles tanto

para los estudiantes que se transfieran a una institución de cuatro años de estudios como para los que prosigan en el College of Marin. Para más información llame al 415.485.9382

Préstamos federales para estudiantes Los préstamos para estudiantes se tienen que reembolsar.

Antes de considerar un préstamo estudiantil, es importante haber planeado una estrategia financiera para la carrera universitaria, que tome en cuenta el monto total de la deuda que el individuo podrá ser capaz de afrontar cuando termine de estudiar.

Préstamos para estudiantes Stafford con subsidios (Subsidized Stafford Student loans): Los estudiantes que reúnen los requisitos de necesidad económica pueden pedir prestado hasta \$3.500 para el primer año de estudios y hasta \$4.500 para el segundo. La tasa de interés es variable. El reembolso del capital y el interés se posterga hasta que hayan transcurrido seis meses a partir del último día de matriculación como estudiante a medio tiempo (o más) en un programa educativo.

Préstamos para estudiantes Stafford sin subsidios (Unsubsidized Stafford Student loans): Los estudiantes que no reúnen los requisitos de necesidad económica para un Préstamo Stafford sin subsidios, o que necesiten otros préstamos adicionales, pueden pedir prestada toda o parte de la cantidad que necesiten a través del Programa de préstamos para estudiantes Stafford sin subsidios, hasta \$6.000 por año. El interés es pagadero desde que se recibe el préstamo. El reembolso del capital se posterga hasta que hayan transcurrido seis meses después del último día de matriculación como estudiante a medio tiempo (como mínimo) en un programa educativo.

Programas de trabajo

Programa federal de trabajo combinado con estudios universitarios: Hay fondos federales para proporcionar un número limitado de trabajos a tiempo parcial dentro de los campus de la universidad

para estudiantes que califiquen, así como algunos trabajos fuera de la universidad. Los estudiantes trabajan hasta 25 horas por semana durante el año lectivo y a tiempo completo durante el verano.

Oficina de colocaciones (Job Placement Office): Esta oficina ofrece a los estudiantes información sobre una gran variedad de empleos disponibles a través de toda la comunidad.

Experiencia laboral (Work Experience): Los estudiantes se pueden matricular en una clase llamada "Work Experience" para obtener crédito lectivo por el trabajo que desempeñen durante el mismo semestre.

Ayuda financiera adicional

Préstamos de emergencia del College of Marin: ASCOM y College of Marin Foundation han provisto fondos para el programa de préstamos de emergencia. Hay disponibles préstamos por treinta días de hasta \$100.

Subsidio para estacionamiento: Los estudiantes que califiquen para ayuda financiera califican además para un descuento del 50% en las tarifas de estacionamiento.

Procedimiento para presentar la solicitud

El estudiante tiene que presentar una solicitud (Free Application for Federal Student Aid). Ciertos programas, por ejemplo MEG, las becas de la fundación benéfica, las Cal Grants y los programas de préstamos) pueden tener formularios de solicitud adicionales. Una vez que se haya presentado la solicitud, la Oficina de Ayuda Financiera (Financial Aid Office) solicitará los formularios adicionales y la documentación de prueba. Los formularios de solicitud están disponibles en la Oficina de Ayuda Financiera. Los formularios para el año lectivo siguiente se pueden pedir en enero.

Información adicional

Para formularios de solicitud e información adicional, comuníquese con la Oficina de Ayuda Financiera de los campus de Kentfield o de Indian Valley.

Crédito de impuesto

Para información sobre crédito de impuesto vea la página 8.

College Policies

Philosophy

The Marin Community College District has long recognized that an academic community is harmed in many ways by the abuse of alcohol and the use of other drugs. This high risk behavior is exemplified by decreased productivity of members of the community, serious health problems, strained social interactions as well as forms of vandalism. The process of education and learning are especially impaired by alcohol abuse and the use of illicit drugs.

College of Marin subscribes to the basic philosophy of the Network of Colleges and Universities Committed to the Elimination of Drug and Alcohol Abuse, which states:

- The institutional establishment enforces clear policies that promote an educational environment free from the abuse of alcohol and other drugs.
- The institution will provide education for its members for the purpose of preventing alcohol and other drug abuse as well as educating them about the use of legal drugs in ways that are not harmful to self or others.
- College of Marin will create an environment that promotes and reinforces healthy responsible living; respect for community laws; campus standards and regulations; the individual's responsibility within the community; and the intellectual, social, emotional, spiritual or ethical, and physical well being of its community members.
- Referral to services for drug and alcohol treatment can be made by the Health Center or Counseling Office.

The foundation of the philosophy concerning alcohol and drug abuse for College of Marin is the firm commitment to an educational program which provides the adequate information and referral to help all members of the academic community to make informed and responsible decisions concerning the use of any controlled substance.

The institution is committed to a healthy environment for learning and living.

Smoking Policy

In order to provide a safe learning and working environment for students and employees, smoking is prohibited in all indoor locations and within 25 feet of any building, including covered walkways, courtyards, ramps, or entrances to buildings. Violation of this policy could lead to disciplinary action under applicable disciplinary procedures. For a complete copy of the Smoking Policy and Guidelines, or a copy of the Student Discipline Procedure, contact the Director of Student Affairs and Health Center, Rm SS 251. Phone 415.485.9375.

Drug and Alcohol Policy—Employees

It is the policy of the Marin Community College District to maintain a drug and alcohol-free workplace for employees.

- The unlawful manufacture, distribution, dispensing, possession or use of controlled substances or alcoholic beverages are prohibited on any District property. The term "controlled substance" is defined in Health and Safety Code 11007. An exception to the above is when alcoholic beverages are produced in connection with an authorized class.

Drug and Alcohol Policy—Students

College of Marin does not permit or condone the consumption of alcoholic beverages by any individual. All local, state, and federal laws concerning the possession or use of any controlled substance are enforced. The institution is committed to a healthy environment for learning and living.

Students are specifically reminded that they are guided by the Student Conduct Policy which states the following to be incompatible with an institution of higher education:

- The use, possession, sale, or distribution of narcotics or other dangerous or illegal drugs (as defined in California statutes) on college property or at any function sponsored or supervised by the college.
- The possession or use of alcoholic beverages on college property, or at any function sponsored or supervised by the college, with the exception of when alcoholic beverages are produced in connection with an authorized class.

Legal Sanctions—Illicit

Drugs and Alcohol

Students and employees are reminded that state, and federal laws provide for a variety of legal sanctions and penalties for the unlawful possession, or distribution of illicit drugs and alcohol. These sanctions include but are not limited to incarceration and monetary fines. All reports of suspected violations will be thoroughly investigated and prosecuted to the full extent of the law.

Further information on these state and federal statutes will be maintained in the College Police Department and the Office of Student Services. Copies will be made available to students and employees.

Equal Opportunity

The Marin Community College District is committed by policy not to discriminate on the basis of, or the perception of any one or more of the foregoing characteristics: race, religious creed, color, national origin, ancestry, physical disability, mental disability, medical condition, marital status, sex, age, sexual orientation, or veteran status in any of its educational and employment programs and activities, its policies, practices and procedures.

Students who believe that this policy has been violated have the right to file an internal complaint or a complaint with the Office of Civil Rights.

The Marin Community College District makes every attempt to stay in compliance with the requirements of Title IX of the 1972 Education Amendments, the Equal Employment Opportunity Act of 1972 (Title VII of the Civil Rights Act of 1964 as amended), the Civil Rights Act of 1991, and Section 504 of the Rehabilitation Act of 1974, the Americans with Disabilities Act, the California Fair Employment and Housing Act of 1980, the California Fair Employment and Housing Commission Rules and Regulations, and the Vietnam Veteran's Readjustment Act of 1974.

College of Marin, under the Equity in Athletics Disclosure Act of 1994, provides information concerning the operation of its intercollegiate athletics program. A completed report is available in the Admissions and Records Office, the Library, and the Athletic Department for public review.

College of Marin Board Policy 3430 prohibits verbal, physical, visual, and sexual harassment of any applicant, employee, or student by any District employee on the basis of any category or combination of discriminatory categories prohibited by state or

federal law. Nonemployees while on the District property are also expected to follow these guidelines.

It is further the policy of this District to ensure equal opportunity in all of its programs and in all aspects of employment. The lack of English skills will not be a barrier to admission to and participation in vocational education programs.

Contacts

Equal Opportunity Employment/A.D.A.

Compliance Officer

Linda Beam

Executive Dean, Human Resources (or Designee)

Administrative Center, Kentfield Campus
415.485.9504

Title IX/Section 504 (Disability) Coordinator—Director of Student Affairs

Arnulfo Cedillo

SS Center, Rm. 251, Kentfield Campus
415.485.9375

Gender, Equity Coordinator

David Cook

Director of Financial Aid
SS Center, Rm. 263, Kentfield Campus
415.485.9409

Open Enrollment Policy

It is the policy of College of Marin that every course section or class, for which attendance is reported for state aid, shall be fully open to enrollment and participation by any person who has been admitted to the college and who meets such prerequisites as may be established pursuant to Chapter II, Division 2, Part VI., Title V of the California Code.

Jeanne Clery Disclosure of Campus Security Policy and Crime Statistics Act

The Jeanne Clery Disclosure of Campus Security Policy and Campus Crime Statistics Act, codified at 20 USC 1092 (f) as a part of the Higher Education Act of 1965, is a federal law that requires colleges and universities to disclose certain timely and annual information about campus crime and security policies. College of Marin crime statistics and additional information about crime awareness can be found on the college website at <http://www.marin.edu/police/CrimeAwareness-CleryInfo.htm>.

Changes May Occur Without Notice

College of Marin has made every reasonable effort to determine that information stated in its publication is accurate, but the college reserves the right to alter fees, statements, and procedures contained herein without notice. Fees and procedures are subject to change at anytime by the State Legislature and the College Board of Trustees. It is the student's responsibility to meet and remain informed of college requirements. When changes occur, they will be printed in the next regular publication of the catalog or schedule, or posted online at www.marin.edu. Classes may be cancelled for insufficient enrollment at the discretion of the college.

Directory of Phone and Office Numbers

Kentfield Campus (KTD)

Inside calls to Kentfield Campus from IVC or KTD campus, dial 7 plus the last three digits of the direct number. When calling from outside the campus dial the switchboard at 415.457.8811 or the direct number as listed below.

Admissions and Records, SS 254	457.8811, ext. 8822
Alumni Association	485.9686
Assessment and Testing, SS 238	485.9469
Associated Students: ASCOM, SS 241	485.9390
ESCOM, SS 146	485.9652
Behavioral Sciences Office, FH 101	485.9630
Biology/Geology Office, SC 137	485.9510
Bookstore, LC 1st floor	485.9394
Business and Information Systems Office, FH 101	485.9610
Cafeteria, SS 1st floor	456.7661
CalWORKs, LC 160	485.9605
Children's Center, AC 40	485.9468
Child Development Program Director, LC 170	457.8811 ext. 7132
Communications Office, HC 125	485.9348
Counseling, SS 212	485.9432
Executive Dean, Human Resources, and Labor Relations, AC 107	485.9504
Dean of Arts and Humanities, HC 220	485.9655
Dean of Enrollment Services, SS 252	485.9414
Dean of Math and Sciences, TB 120	485.9507
Dean of Student Development and Special Services, SS 258	485.9618
Director of Financial Aid, SS 235	485.9405
Director of Student Affairs and Health Center, SS 251	485.9375

Disabled Students Program (DSPS), LC 115	485.9406
Echo Times Newspaper, LC 36	485.9690
Emeritus College, SS 145	485.9368
English as a Second Language (ESL), HC 101	485.9642
English/Humanities Office, HC 125	485.9348
Extended Opportunity Programs and Services (EOPS), LC 160	485.9605
Equal Opportunity/Compliance Officer	485.9504
Financial Aid Office, SS 236	485.9409
Fine/Visual Arts Office, FA 102	485.9480
Health Services, HS, Lot 6	485.9458
Health Sciences Office, HC 111	485.9319
Human Resources	485.9340
Humanities, HC 125	485.9348
Job Placement, SS 206	485.9410
Library, LC 2nd floor	485.9756
Lost and Found, TB 105	485.9455
Math Office, SC 137	485.9510
Media Center/Language Lab, LC 127	485.9645
Modern Languages Office, HC 125	485.9348
Outreach/School Relations, SS 232	485.9663
Parking Permit Purchase—Admissions and Records	SS 254
Performing Arts Office, FA 77	485.9460
PE/Athletics Office	485.9580
Physical Sciences Office, SC 137	485.9510
Police, Campus, TB 105	485.9455
Single Stop Office, SS 124	457.8811 ext. 7761
Social Sciences Office, FH 101	485.9630
Student Affairs, SS 250	485.9376
Swimming Pool	485.9587
Transfer/Career Center, SS 202	485.9671
Tutoring and Learning Center, (TLC), LC 160	485.9620
Veterans Office, SS 202	485.9544

Indian Valley Campus (IVC)

For calls to IVC from outside the IVC or Kentfield Campus dial 415.457.8811 plus the extension.

Admissions and Records, Bldg 27, East Hall 109	ext. 8822
Assessment and Testing Office, KTD/SS 238	485.9469
Bookstore, KTD	485.9394
Career Education Office	ext. 8200
Children's Center, Bldg. 12	ext. 8170
Early Head Start Infant Toddler Center, Bldg. 12	ext. 8171
Child Development Program Office	ext. 8221
Director	ext. 8222
College Operations	884.3100/ 884.3101
Counseling Appointments, KTD/SS 212	485.9432
Dean of Workforce Development College and Community Partnerships	ext. 8506
Disabled Students Program (DSPS), KTD/LC 115	485.9406
Echo Times Newspaper KTD/LC 36	485.9690
Emeritus Center, AS 140	ext. 8322
Emeritus College KTD/SS 148	485.9368
English Skills Lab, Bldg 17	ext. 8326
Financial Aid, Bldg 27, Rm 107	884.3118
Fiscal Services, AS 102	884.3160
Health Center	485.9458
Intensive English Program	883.2211, ext. 8579
Job Placement, KTD/SS 206	485.9410
Lost and Found/Campus Police, C-3 104	ext. 8154 or 883.3179
Math Lab, Bldg 17	ext. 8510
Media Services IVC	485.9606
Police, Campus, C3 104	ext. 8154 or 883.3179
Swimming Pool	457.8811, ext. 8260
Transfer/Career Center, KTD/SS 202	485.9671
Veterans Office, Bldg 27/109	ext. 8822

Kentfield Campus Map and Directory

College of Marin
 Kentfield Campus
 835 College Avenue
 Kentfield, CA 94904

Emergency: Dial 911
 Urgent: 415.485.9696
 Kentfield Police Business: 415.485.9455

Summer 2012 Parking Notice

While our campus is under construction, parking lots 4 and 16 are closed. Lots 12 and 15 typically have spaces available, and lot 13 remains a "free" lot. We appreciate your patience during our construction.

Parking

Vehicles on campus are subject to parking and traffic regulations by the Board of Trustees, Marin Community College District. All cars must have a parking sticker, or display a daily parking permit which may be purchased from the parking ticket dispensers located in parking lots.

Motorcycle and handicap parking are available with no fee.

Parking permits are required at all times, except Saturdays, Sundays and school Holidays, and in Lot 13.

AC

Administrative Center
 Children's Center

BC*

Business and Management Center

FA*

Fine Arts (new building)

FH*

Fusselman Hall
 Behavioral & Social Sciences

HC*

Harlan Center
 ESL Program/College Skills Office
 Humanities
 Health Sciences

HS

Health Services

LC*

Learning Resources Center
 Library
 Bookstore
 Disabled Students

CY

Maintenance Offices

MS3*

Dance Center

OH*

Olney Hall and Auditorium

PE*

Physical Education Center
 Gymnasium
 Pools

PA*

Performing Arts (formerly Fine Arts)
 Box Office
 Theatres
 Art Gallery

PV*

Portable Village
 Modernization Office/Classrooms

SC*

Science Center
 Mathematics
 Life/Earth/Physical Sciences

SS

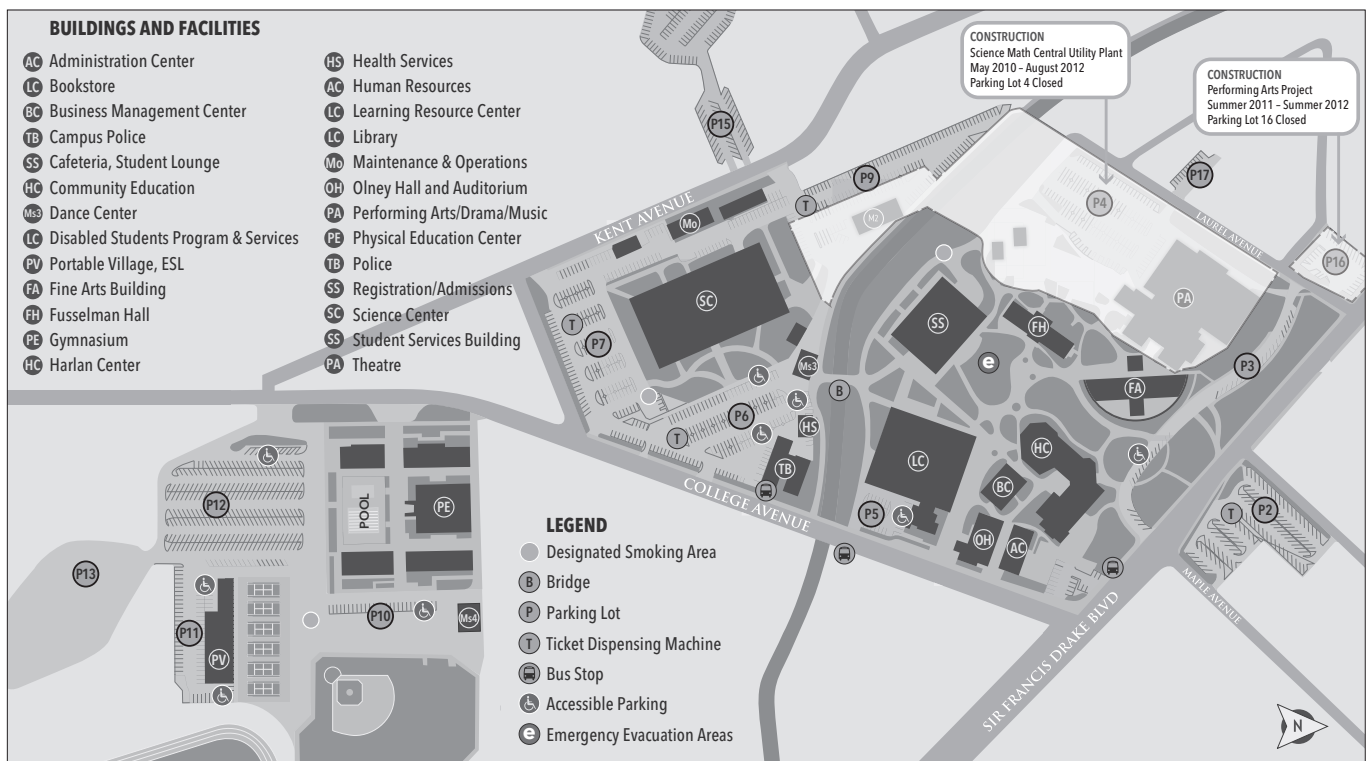
Student Services Center
 Registration
 Cafeteria
 Emeritus/Community Services

TB* (TB-1)

Temporary Building
 Campus Police
 Marin County Sheriff Substation

*Building contains classrooms

Note: The old Fine Arts building is now the Performing Arts building, and is designated as "PA" in the schedule (examples: PA 120, PA 150). The new Fine Arts building is designated as "FA" (examples: FA 201, FA 301).



Indian Valley Campus Map and Directory

College of Marin
 Indian Valley Campus
 1800 Ignacio Blvd.
 Novato, CA 94949

Emergency: Dial 911
 Urgent: 415.485.9696
 IVC Police Business Phone: 415.883.3179

Parking

Vehicles on campus are subject to parking and traffic regulations by the Board of Trustees, Marin Community College District. All cars must have a parking sticker, or display a daily parking permit, which may be purchased from the parking ticket dispenser.

Motorcycle and handicap parking are available with no fee.

Parking permits are required at all times, except Saturdays, Sundays, and school holidays.

BUILDING 27 (New Main Building)

First Floor: Student Services (Rooms 103–109), Admissions, Financial Aid, Counseling, EMT (Room 112), General Classrooms (Rooms 116, 118), Food/Drink Vending Machines (Room 121), Library (Room 124), Computer Classroom (Room 125), Multimedia (Rooms 129–131)

Second Floor: Medical Assisting (Room 219), Dental Assisting (Rooms 220, 224), Court Reporting/General Classrooms (Rooms 228, 229, 233)

BUILDINGS 1 – 7 (Formerly POMO)

1. Transportation Technology Auto Collision Repair Lab
2. Transportation Technology Auto Technology Lab
3. General Classrooms/Labs/Offices/ Drink/Snack Vending Machines (Rooms 150–154, 250–263) Intensive English Program (Room 259)
4. Machine and Metals Technology (Rooms 160–175)
5. Simulation Center (Rooms 180–189)
6. General Classrooms/Labs/Offices (Rooms 100–119, 200–218)
7. General Classrooms, Offices, and Computer Labs (Rooms 190–199)

BUILDINGS 8 – 12 (Formerly ADMINISTRATIVE SERVICES)

8. Fiscal Services/Workforce Development
9. Fiscal Services, College Operations
10. Emeritus Meeting Room/ Modernization Office.

11. Information Systems Center
12. Child Development Program: Classroom, Children’s Center, and Early Head Start Infant Toddler Center

BUILDINGS 13 – 16 (Formerly MIWOK)

13. Offices/General Classrooms (Rooms 120–122, 226)
14. A+ Computer Lab (Room 140) CIS Computer Lab (Room 144)
15. Conference Center/Lecture/ Board Meetings (Room 181) Dance (Room 170)
16. Classrooms/Offices/Env. Landscape/ Center for Sustainable Horticulture (Rooms 101–117, 202–217)

BUILDING 17

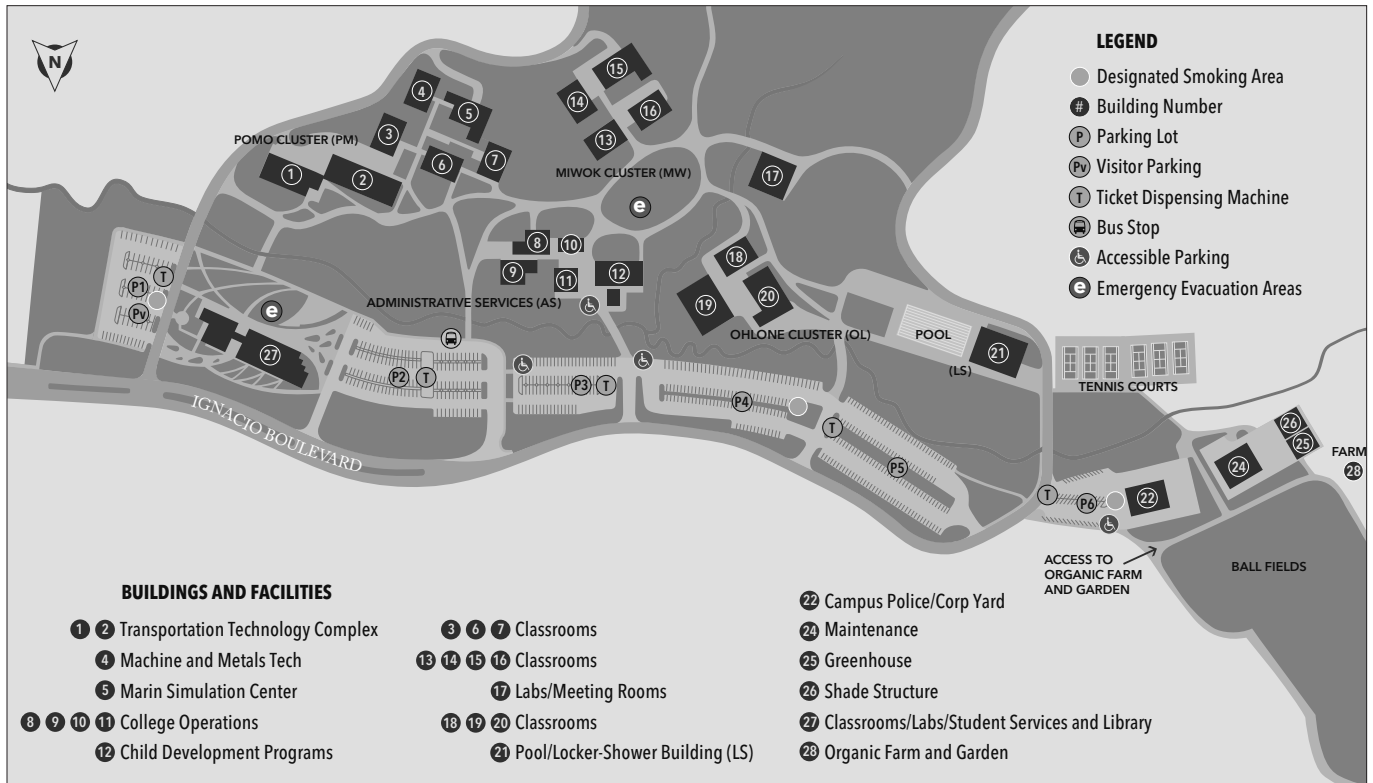
17. Building 17: Career Study Center; Math and English Labs

BUILDINGS 18 – 20 (Formerly OHLONE)

18. Offline
19. Offline
20. Activity Classroom (Room 106)
21. Pool/Shower–Locker Bldg/ Drink Vending Machine
22. Campus Police/Corporation Yard
23. Maintenance
24. ORGANIC FARM
25. Greenhouse
26. Shade Structure

REST ROOMS:

Buildings 5, 6, 9, 11, 13, 15, 17, 19, 20, 27



Driving Directions

Directions from Highway 101

To Kentfield Campus
835 College Avenue
Kentfield, CA 94904

From Highway 101, take the San Anselmo exit (northbound) or the Sir Francis Drake Blvd. exit (southbound) and follow Sir Francis Drake Blvd. to College Ave. (seventh stoplight). For the Physical Education complex, Portable Village, the Science Center, the Learning Resources Center (library) and the Student Services Center (Admissions & Records), turn left on College Ave. For Harlan Center, stay on Sir Francis Drake Blvd., crossing the College Ave. intersection, and turn right on Maple Ave. to parking lot. For the Fine Arts Building and Fusselman Hall, stay on Sir Francis Drake Blvd., turning left on Laurel Ave. Park in college parking lots.

Please reference online campus maps for parking lot closures due to construction.

To Indian Valley Campus
1800 Ignacio Blvd.
Novato, CA 94949

From Highway 101, take Ignacio Blvd. exit and continue on Ignacio Blvd. west (approx. two miles) to the Indian Valley Campus. For Building 27, Trans Tech and Pomo Cluster park in Lots 1 and 2; for Fiscal Services, Miwok Cluster and Building 17, park in Lots 3 and 4; for Ohlone Cluster, the pool and the Organic Farm, park in Lots 5 and 6.

Public Transportation Directions

Golden Gate Transit (GGT) provides bus service to Sonoma, Marin, and San Francisco Counties. For more detailed information than that given below, visit the GGT web site at www.goldengate.org, call 415.455.2000 (Marin County), 707.541.2000 (Sonoma County), or 415.923.2000 (San Francisco),

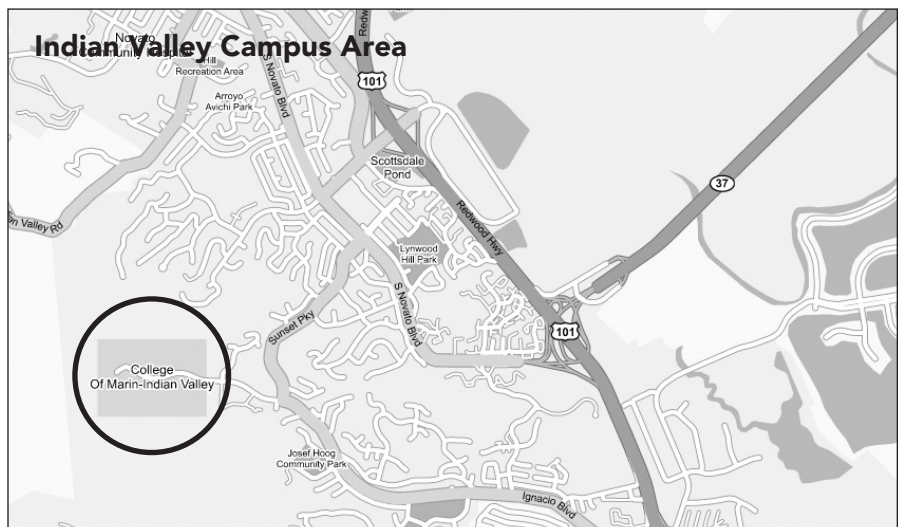
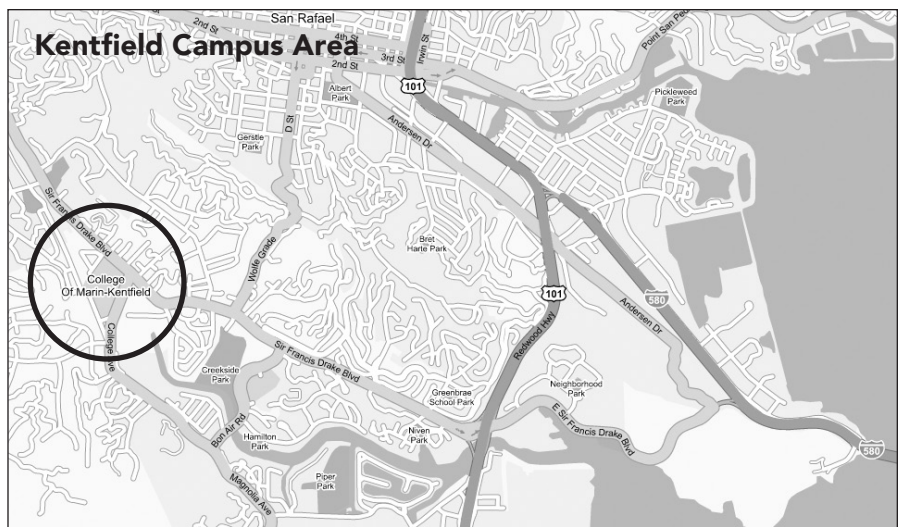
You may also pick up a copy of their Transit Guide and Map from any GGT bus.

To Kentfield Campus

The Kentfield campus of College of Marin is served by GGT Routes 18, 22, 24, and 29.

To Indian Valley Campus

The Indian Valley College Campus is served by GGT Route 51.



Parking Information

Parking permits are required at all times, including evenings (except Saturdays, Sundays, and school holidays). Be sure to read the signs at the entrances to parking lots. The signs explain what type of permit is allowed in the lot (staff or student), and include any additional parking regulations. For student parking lot locations, see the campus maps.

Daily permits and semester permits are valid at either campus. All California Vehicle Codes can be enforced in campus parking lots. Obey all signs and markings. All vehicles improperly parked will be cited, and may be towed.

Daily Parking Permits

You may purchase a daily parking permit from dispensers located in several student parking lots. In the event of a dispenser malfunction, you must purchase a daily permit from a different machine. Please report all malfunctions to the campus police at 415.485.9696. The cost for a daily permit is \$3 (subject to change). Daily permits must be visible on the driver side of the vehicle dashboard.

NEW Term Parking Permits Available for Purchase Online

A term permit is much more convenient, and will save you money, compared to a daily permit. Summer session permits are \$20 (subject to change) and are available for purchase online via the MyCOM Portal beginning April 18, 2012. This convenient option will be offered through Parking Plus and a nominal handling fee will be charged.

In person purchase of parking permits at the Offices of Admissions & Records is available beginning June 18, 2012 (the first day of the summer session). In-person parking permits are ordered at designated kiosk computers in the Admissions Lobbys, then picked up & paid for at the Admissions counter.

Term permits must be attached inside the vehicle on the lower left corner of the front windshield. Lost or stolen permits are not replaced. Please see page 9 for the Parking Permit Refund Policy.

Disabled Students Parking

No parking permits are required for disabled students. A disabled placard or license plate issued by the State of California Department of Motor Vehicles must be displayed.

Financial Aid Students Parking

Students receiving Financial Aid are permitted to purchase parking permits at half price.

IMPORTANT NOTE: Due to construction, parking closures are in effect on the Kentfield campus. Please refer to the Kentfield campus map for lot closures. We appreciate your patience.

Go Online for Parking



THREE EASY STEPS to get your parking permit decal

1. Log onto MyCOM portal & order Parking permit decal.
2. Print Temporary Permit.
3. Put it on your dashboard until the real permit arrives.

NO HASSLES. NO LINES. NO TICKET!



About College of Marin

Mission Statement

College of Marin's commitment to educational excellence is rooted in our mission to provide excellent educational opportunities for all members of our diverse community by offering:

- preparation for transfer to four-year schools and universities;
- workforce education;
- basic skills improvement/English as a Second Language;
- intellectual and physical development and lifelong learning; and
- cultural enrichment.

College of Marin is committed to responding to community needs by offering student-centered programs and services in a supportive, innovative learning environment with a strong foundation of sustainability, which will instill environmental sensitivity in our students.

Approved at the April 20, 2010, Board Meeting

Our Vision

College of Marin will be a premier educational and cultural center that provides programs of the highest caliber to meet the needs of an increasingly interconnected global society. Our vision will be guided by our values.

Accreditation

College of Marin is accredited by the Accrediting Commission for Community and Junior Colleges of the Western Association of Schools and Colleges, 10 Commercial Blvd., Novato, CA 94949, 415.506.0234, an institutional accrediting body recognized by the Commission on Recognition of Postsecondary Accreditation and the U.S. Department of Education.

Our Legacy

College of Marin has been providing exceptional educational opportunities since 1926. The College has earned a reputation as a quality educational institution that provides a pathway for achievement and success for students of all ages and backgrounds.

Enrollment

College of Marin serves approximately 10,400 credit and noncredit students each semester.

Statement of Values

Student and Community Centered Education

We promote student success by providing programs and services that are learner centered and reflect the changing needs of our students and surrounding community.

Academic Excellence and Innovation

We are dedicated to academic excellence and encourage innovation. We foster intellectual inquiry by encouraging critical thinking, information literacy, and technical competence. We continually evaluate the effectiveness of our programs.

Collaboration and Open Communication

We cultivate a culture of mutual respect, open communication, collaborative working relationships, and participation in decision making among students, faculty, staff, and the communities we serve.

Diversity

We cherish a learning environment that celebrates diverse backgrounds and recognizes the knowledge and experiences among its students, faculty, and staff. We will provide open access and strive to remove barriers to student success.

Sustainability

We will apply environmentally sustainable and green principles in our college community to ensure the future of our planet.

Accountability

We will be accountable for our decisions and actions on behalf of the students, college, and community. Our decisions will be academically, fiscally, and environmentally responsible.



10 Reasons to Attend College of Marin

1. Transfer to a University
2. Workforce Preparation and Job Training
3. Affordable Enrollment Fees
4. University-Caliber Faculty
5. Personal Attention and Small Class Size
6. Excellent Counseling and Support Services
7. Close to Home
8. Financial Aid is Available
9. Student Life: Clubs, Sports, and Activities
10. Open Enrollment

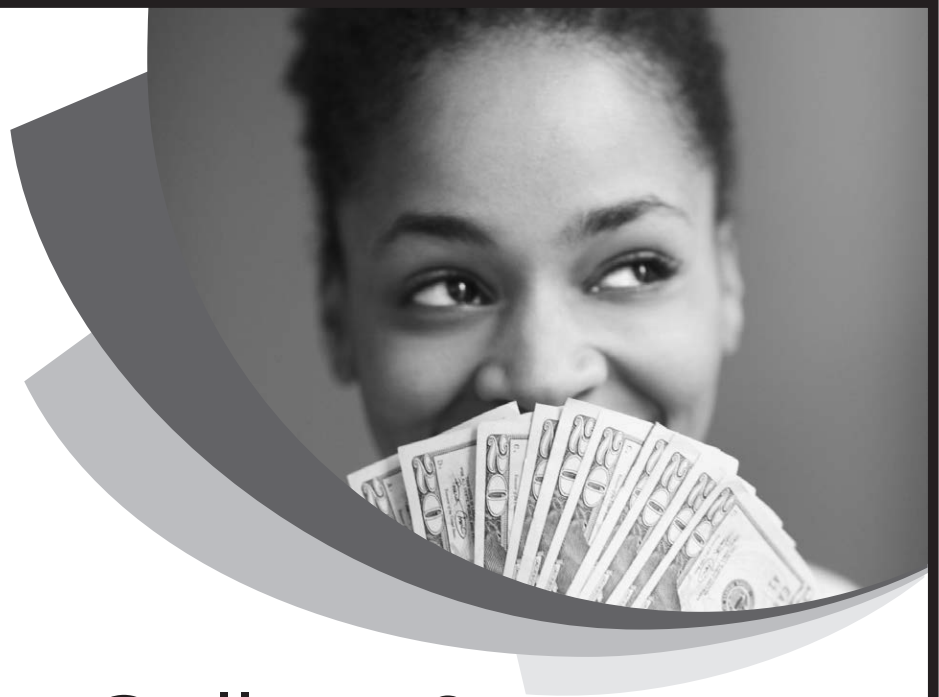
For more information visit www.marin.edu, or make an appointment with a counselor by calling 415.485.9432.

This publication has been produced by:
Office of Instructional Management
Director, Cari Torres

Office of Communications & Community Relations
Director, Cathy Summa-Wolfe

Cover Design: Dave Mahoney
Book Design: Dave Mahoney

Production: Alganesh Hagos, Tom Hudgens,
James Kuromiya, Dong Nguyen, Kim O'Gara



Looking for Money for College?

FIND OUT IF YOU ARE ELIGIBLE FOR FINANCIAL AID.

What is Financial Aid?

Financial Aid can help you pay for your college education. It is available from various sources, ranging from federal and state agencies, to private donors and local organizations. Financial Aid includes grants, loans, scholarships, work-study programs, and enrollment fee waivers. Grants and scholarships don't have to be repaid. Loans must be repaid. Last year College of Marin students received over \$16 million in federal and state financial aid and private scholarships!

How to Apply for Financial Aid:

Most types of financial aid require that you file a FAFSA (Free Application for Federal Student Aid). You can complete a FAFSA online at www.fafsa.ed.gov. Some programs (Marin Education Fund, College of Marin Foundation Scholarships, Cal Grants, Stafford Loans) may also require additional applications. The FAFSA form covers one academic year (summer, fall, and spring). A new FAFSA needs to be submitted for each new academic year.

What Funding Sources are Available?

Board of Governor's Fee Waiver (BOGW)
Federal Pell Grant
Federal Supplemental Educational Opportunity Grant (SEOG)
Federal Work-Study Program (CWS)
Cal Grants: Cal Grant A, Cal Grant B, Cal Grant C

College of Marin Foundation
Scholarships
Federal Stafford Loan Program:
Subsidized Stafford Loans,
Unsubsidized Stafford Loans
College of Marin Emergency Loans

FIND OUT MORE ABOUT FINANCIAL AID!

College of Marin Financial Aid Office

www.marin.edu/financial_aid/index.htm

financial.aid@marin.edu

Kentfield Campus

(415) 485-9409

Indian Valley Campus

(415) 457-8811 ext 8118

COM Foundation

www.comf.org

(415) 485-9382

Federal Grants and Loans

FAFSA (Free Application for Federal Student Aid)

www.fafsa.ed.gov

1 (800) 433-3243

California State Grants

California Student Aid Commission

www.csac.ca.gov

1 (888) 224-7268

COLLEGE OF
MARIN

KENTFIELD CAMPUS

835 College Avenue
Kentfield, CA 94904

INDIAN VALLEY CAMPUS

1800 Ignacio Boulevard
Novato, CA 94949

415.457.8811
www.marin.edu

*College of Marin is
fully accredited by WASC.*

MARIN COMMUNITY
COLLEGE DISTRICT
835 COLLEGE AVENUE
KENTFIELD CA 94904-2590

NON-PROFIT
U.S. POSTAGE
PAID
MARIN COMMUNITY
COLLEGE DISTRICT
ECRWSS

RESIDENTIAL CUSTOMER

Featured Classes



DRAWING
AND COMPOSITION
page 18



INTRODUCTION TO
PERSONAL COMPUTERS
page 21



HISTORY OF AFRICAN
AMERICANS
page 26



PRINCIPLES OF
MACROECONOMICS
page 23



LAP SWIMMING
page 30

COLLEGE OF

MARIN

www.marin.edu

