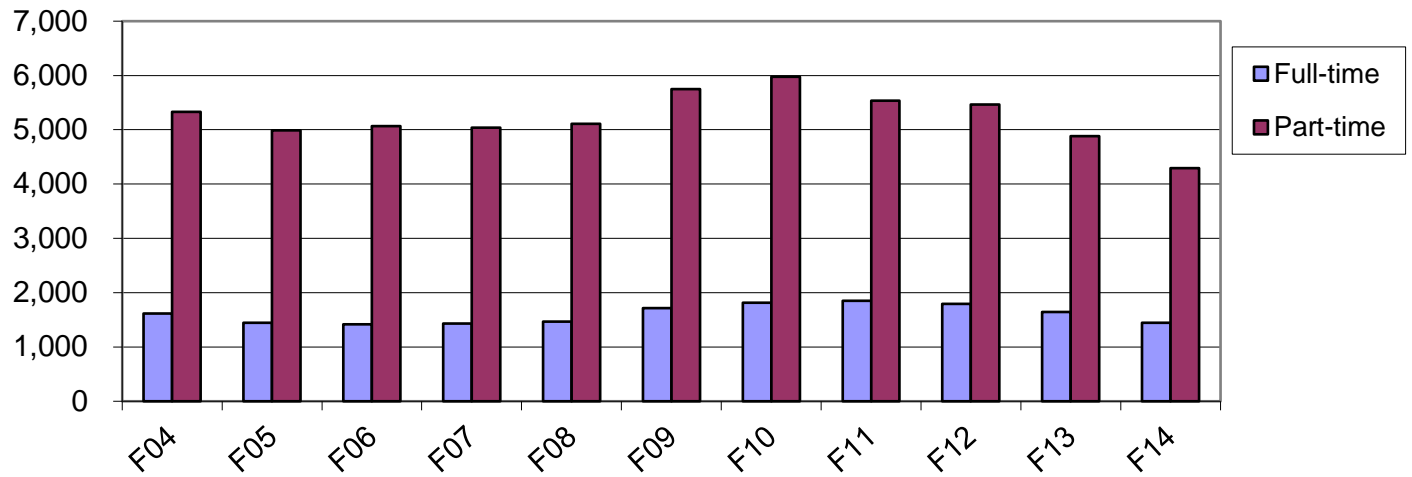


**College of Marin
Full-time/Part-time Status of Credit Students As of First Census Day Fall
2004 - Fall 2014**



Percentage of Full-time and Part-time Credit Students

Fall	Full-time	% Full-time	Part-time	% Part-time
F04	1,613	23.2%	5,330	76.8%
F05	1,449	22.5%	4,988	77.5%
F06	1,417	21.9%	5,065	78.1%
F07	1,429	22.1%	5,040	77.9%
F08	1,470	22.4%	5,107	77.6%
F09	1,714	23.0%	5,746	77.0%
F10	1,814	23.3%	5,975	76.7%
F11	1,848	25.0%	5,539	75.0%
F12	1,790	24.7%	5,466	75.3%
F13	1,641	25.2%	4,883	74.8%
F14	1,444	25.2%	4,293	74.8%

Year-to-Year Change in Full-time and Part-time Enrollment Status

Fall	Full-time	% Change Year-to-Year in Full-time	Part-time	% Change Year-to-Year in Part-time
F04	1,613		5,330	
F05	1,449	-10.2%	4,988	-6.4%
F06	1,417	-2.2%	5,065	1.5%
F07	1,429	0.8%	5,040	-0.5%
F08	1,470	2.9%	5,107	1.3%
F09	1,714	16.6%	5,746	12.5%
F10	1,814	5.8%	5,975	4.0%
F11	1,848	1.9%	5,539	-7.3%
F12	1,790	-3.1%	5,466	-1.3%
F13	1,641	-8.3%	4,883	-10.7%
F14	1,444	-12.0%	4,293	-12.1%

A full-time student is defined as taking 12 or more units.

Source: First census data from COM's enterprise data management system